

MOUNTAIN AIRE

2016 LUXURY MOTOR COACH







MOUNTAIN AIRE

WELCOME TO THE TOP

Freightliner® Tag Axle SL chassis with 500 HP Cummins® ISX diesel engine

11-speaker, 360-watt custom-tuned JBL® premium cockpit audio system

Comfort Drive™ Steering System with Passive Steer technology

All-new Cathedral Ceiling featured on all bath-and-a-half models



WHEN YOU KNOW THE DIFFERENCE SM



KIM MOORE & KYLE McCRARY

The Planning and Design Team, Newmar Corporation

As designers, our job is to marry form and function in such a way that every piece and every part works together to enhance the RV experience. At Newmar, we're able to exceed customer expectations regarding the looks and livability of our coaches because we listen. We attend numerous rallies and shows each year, have direct conversations with dozens of RV enthusiasts and take the input we receive straight to the drawing board. It's a big reason why our products consistently feature industry-leading design elements that combine to form some of the finest Class A motor coaches on the road.

A HIGHER LEVEL OF INNOVATION

One of the industry's most distinguished luxury motor coaches, Mountain Aire delivers everything a premium coach should – effortless power, superior comfort, leading-edge technology and unmistakable style.

For 2016, the iconic Mountain Aire features breakthroughs you won't find on the competition. More Floor brings full-tile flooring to the flat-floor slide-outs in the kitchen, living area and master bedroom. Newmar's all-new STAR Foundation adds strength and support to a standard Freightliner® or optional Spartan® chassis. Mountain Aire also gives you six inches of additional headroom in the rear master bath thanks to Cathedral Ceiling, an engineering marvel that is nearly invisible from the outside.





MOUNTAIN AIRE

WELCOME TO THE TOP

Freightliner® Tag Axle SL chassis with 500 HP Cummins® ISX diesel engine

11-speaker, 360-watt custom-tuned JBL® premium cockpit audio system

Comfort Drive™ Steering System with Passive Steer technology

All-new Cathedral Ceiling featured on all bath-and-a-half models



WHEN YOU KNOW THE DIFFERENCE SM





Artisan Décor with Manhattan Maple Glazed Cabinetry – Floor Plan 4553

ELEVATED EVERYTHING

The 2016 Mountain Aire houses a purpose-built kitchen that marries exceptional style with remarkable practicality. A polished solid-surface countertop surrounds a double-bowl stainless steel sink, while a spacious wood pantry utilizes LED lighting to help you find what you need, when you need it.

One of Newmar's latest engineering advances, More Floor utilizes an HWH® hydraulic leveling system to bring high-gloss full tile flooring to the flat-floor slide-outs in the kitchen, living area and master bedroom.



Available Heated Tile Flooring

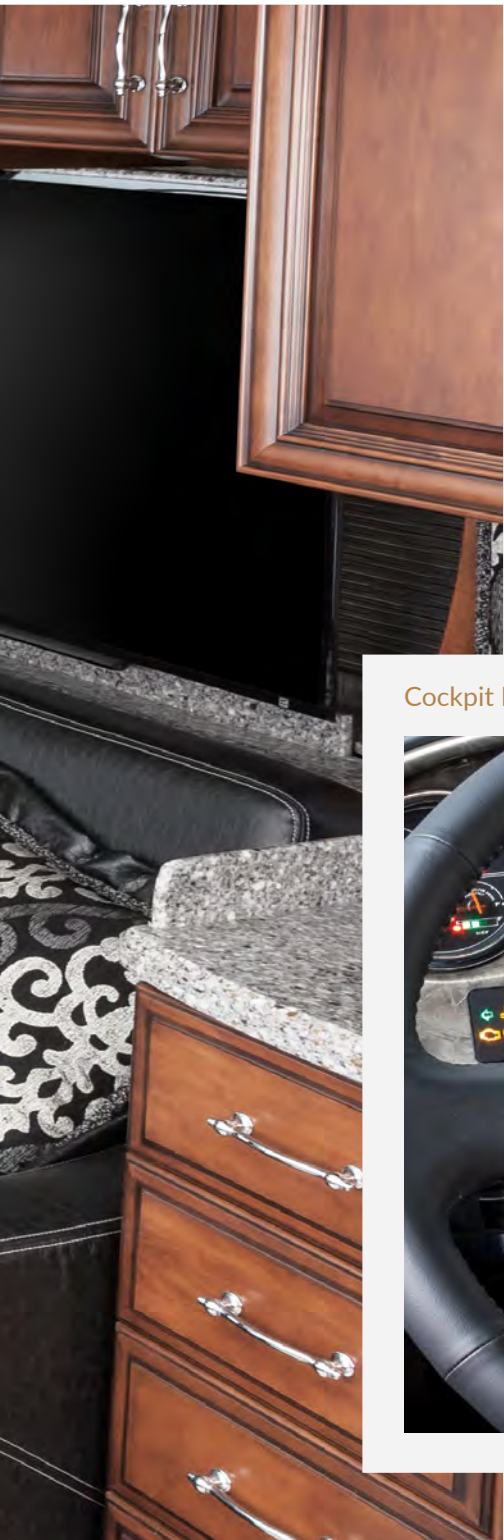




Manhattan Maple Glazed Cabinetry with Stone & Glass Tile Backsplash



Available 87" Power Extend a Flex L-Sofa



LUXURY AT ITS PEAK

Step inside the 2016 Mountain Aire, with its all-new Flexsteel® furniture with Pompeii Collection by Ultrafabrics® and polished tile flooring and you'll know you've arrived

well before you reach your final destination. Adding to the ambiance is a 48" Sony® LED TV with Bluetooth®-compatible Bose® CineMate® home theater system.

The JBL logo is displayed in white text on a dark grey rectangular background.

Cockpit Featuring an 11-Speaker, Custom-Tuned JBL® Premium Audio System





King-Size Bed with Overhead Storage Cabinets

High-Gloss Cabinetry with a Polished Solid-Surface Countertop



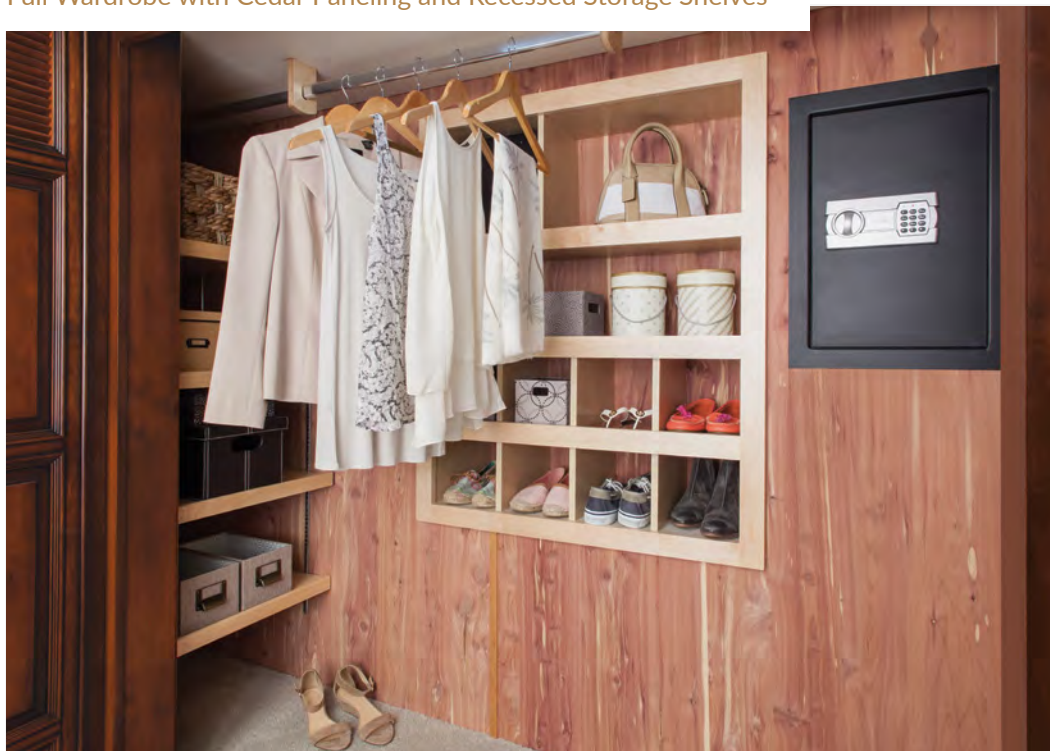
Quilted Bedspread with Accent Pillows

PREMIER LODGING

The 2016 Mountain Aire is crafted to go far above and well beyond anything else in its class. The standard SilverLeaf system lets you control multiple coach functions from the cockpit or master bedroom, and can automatically switch between heat and air conditioning.

When it comes time to relax, a King bed with plush pillow-top mattress will be waiting. Opt for an available Sleep Number® mattress and you'll be able to adjust both firmness and support. Uncompromising picture and sound come courtesy of a 40" Sony® LED TV with Blu-ray/DVD player, while adjustable accent lighting helps you make the most of any occasion.

SONY®



UNINTERRUPTED SPACE

To each their own – that’s the idea behind Mountain Aire’s master bathroom, which presents you with his and hers under-mounted sinks, ample storage on both sides and a full-width mirror big enough for two. Should you find yourself with guests, an attractive mid-cabin half-bath provides company with sufficient privacy.

Both spaces are powered by a Demand water system and come decorated with polished solid-surface countertops and a mosaic tile backsplash. In the master bathroom, a 40” x 32” glass-door shower with solid-surface walls acts as a soothing retreat, while a Fan-Tastic® vent with rain sensor keeps things comfortable.





Polished Solid-Surface Twin-Sink Vanity



Glass-Door Shower with Available Teak Shower Seat



Girard® Power Side Awning with Wind Sensor and LED Lighting



REACH NEW HEIGHTS

Choose the 2016 Mountain Aire and you have a choice between a standard Freightliner® SL tag axle chassis or an optional Spartan® K2 tag axle chassis. Either way, your Mountain Aire will receive the support of the Newmar STAR Foundation, a revolutionary steel superstructure designed to enhance chassis durability.

Raising the bar even further, Mountain Aire delivers the ultimate RV driving experience thanks to Comfort Drive with Passive Steer technology, full disc brakes and automatic traction control. The icing on the cake of all this engineering prowess? Newmar's Full-Paint Masterpiece™ Finish with Cut & Buff.



EXTERIOR DÉCOR



CANVAS EXTERIOR



WINDSWEPT EXTERIOR

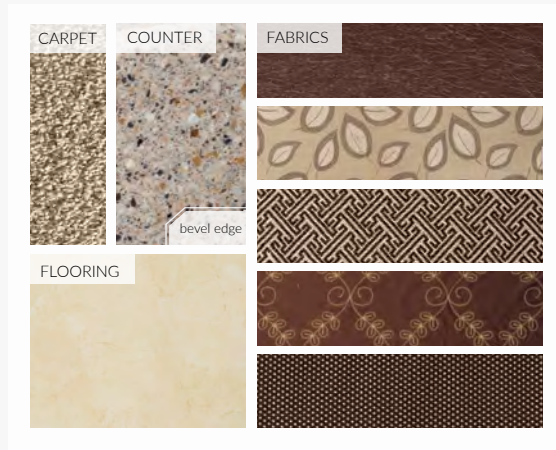


NIGHT SHADE EXTERIOR

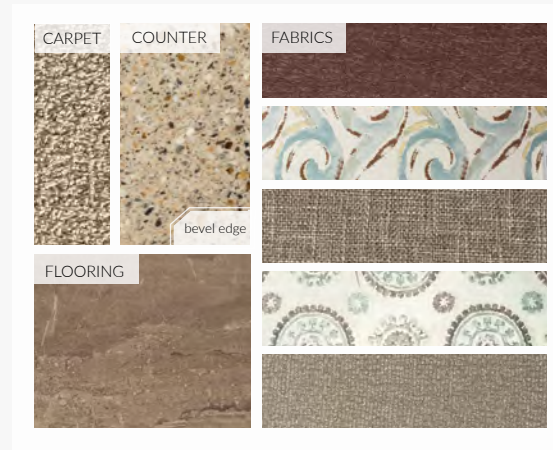


SPARROW EXTERIOR

INTERIOR DÉCOR



WILLOW INTERIOR



SEA GROVE INTERIOR



ASPIRE INTERIOR



ARTISAN INTERIOR

WOOD OPTIONS



WICKER GLAZED
MAPLE



CARMEL GLAZED
CHERRY

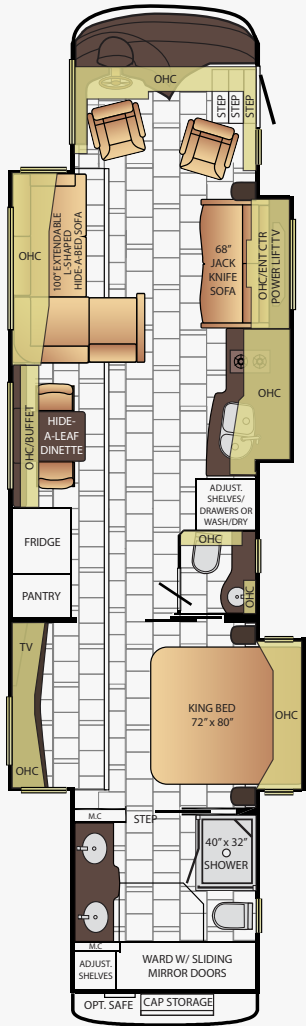


MANHATTAN
GLAZED MAPLE



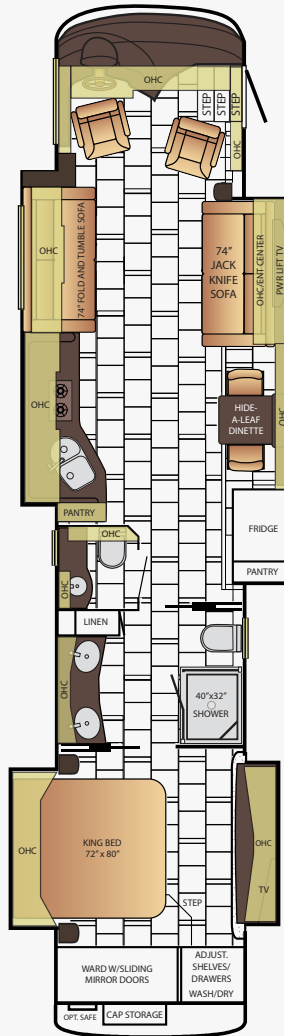
SABLE MAPLE

FLOOR PLANS



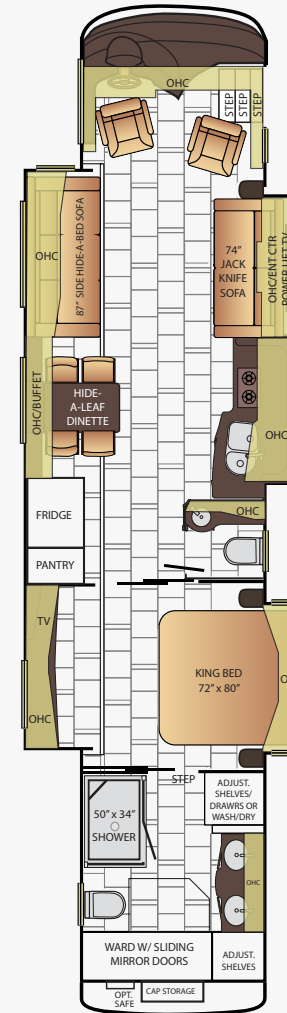
4503

App. Overall Length	44'10"
Width	101.5"
App. Overall Height	13'2"
Interior Width	95.5"
Interior Height	84"
Grey Tank	65 gal.
Sewage Tank	45 gal.
Water Tank	105 gal.
Propane Tank	22 gal.
Furnace	50,000 btu



4518

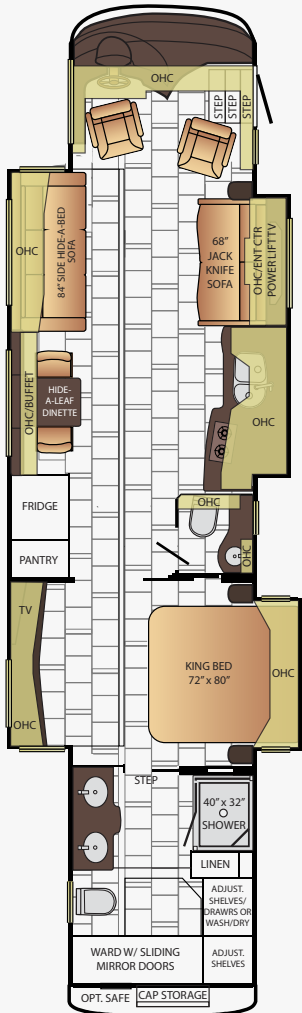
App. Overall Length	44'10"
Width	101.5"
App. Overall Height	13'2"
Interior Width	95.5"
Interior Height	84"
Grey Tank	65 gal.
Sewage Tank	45 gal.
Water Tank	105 gal.
Propane Tank	22 gal.
Furnace	50,000 btu



4519

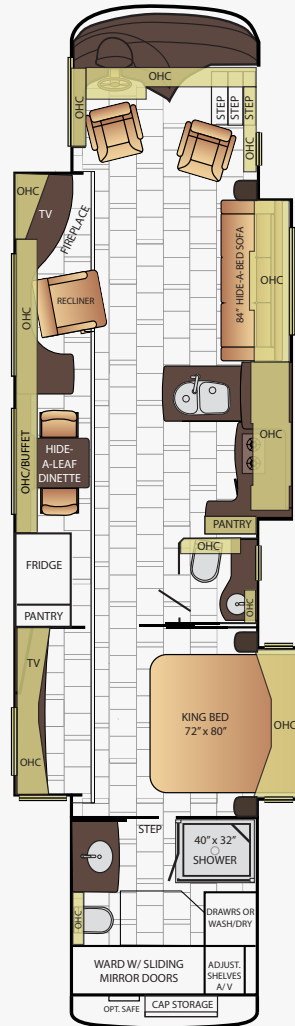
App. Overall Length	44'10"
Width	101.5"
App. Overall Height	13'2"
Interior Width	95.5"
Interior Height	84"
Grey Tank	65 gal.
Sewage Tank	45 gal.
Water Tank	105 gal.
Propane Tank	22 gal.
Furnace	50,000 btu

FLOOR PLANS



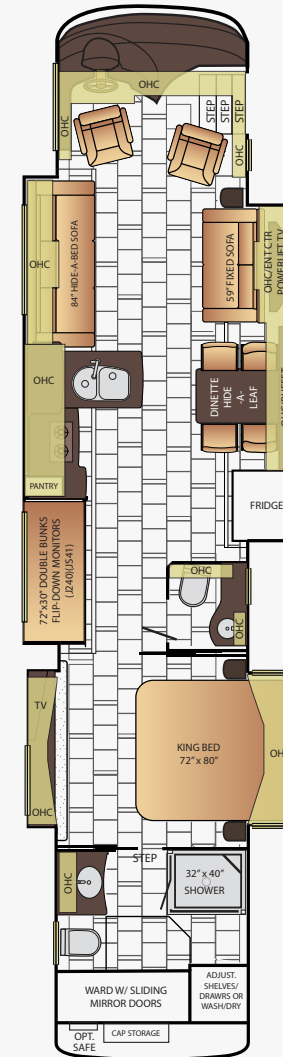
4553

App. Overall Length	44'10"
Width	101.5"
App. Overall Height	13'2"
Interior Width	95.5"
Interior Height	84"
Grey Tank	65 gal.
Sewage Tank	45 gal.
Water Tank	105 gal.
Propane Tank	22 gal.
Furnace	50,000 btu



4565

App. Overall Length	44'10"
Width	101.5"
App. Overall Height	13'2"
Interior Width	95.5"
Interior Height	84"
Grey Tank	65 gal.
Sewage Tank	45 gal.
Water Tank	105 gal.
Propane Tank	22 gal.
Furnace	50,000 btu



4598

App. Overall Length	44'10"
Width	101.5"
App. Overall Height	13'2"
Interior Width	95.5"
Interior Height	84"
Grey Tank	65 gal.
Sewage Tank	45 gal.
Water Tank	105 gal.
Propane Tank	22 gal.
Furnace	50,000 btu

CONSTRUCTION & CHASSIS SPECIFICATIONS

Choose the 2016 Mountain Aire and you have a choice between a standard Freightliner® SL tag axle chassis or an optional Spartan® K2 tag axle chassis. Either way, your Mountain Aire will receive the support of the Newmar STAR Foundation, a revolutionary steel superstructure designed to enhance chassis durability.

Raising the bar even further, Mountain Aire delivers the ultimate RV driving experience thanks to Comfort Drive with Passive Steer technology, full disc brakes and automatic traction control. The icing on the cake of all this engineering prowess? Newmar's Full-Paint Masterpiece™ Finish with Cut & Buff.

Standard Specifications

Standard Specifications										Freightliner Specific		Spartan Specific	
Floor Plan	Engine HP	Axle Ratio	Fuel Cap.	Wheel Base	Front GAWR*	Rear GAWR*	Tag GAWR*	GVWR*	GCWR*	App. UVW	App. NCC	App. UVW	App. NCC
4503	500	4.3	150 gal.	294+TAG	20,000 lb.	20,000 lb.	14,000 lb.	54,000 lb.	69,000 lb.	44,700 lb.	9,300 lb.	43,800 lb.	10,200 lb.
4518	500	4.3	150 gal.	294+TAG	20,000 lb.	20,000 lb.	14,000 lb.	54,000 lb.	69,000 lb.	44,600 lb.	9,400 lb.	43,700 lb.	10,300 lb.
4519	500	4.3	150 gal.	294+TAG	20,000 lb.	20,000 lb.	14,000 lb.	54,000 lb.	69,000 lb.	44,800 lb.	9,200 lb.	43,900 lb.	10,100 lb.
4553	500	4.3	150 gal.	294+TAG	20,000 lb.	20,000 lb.	14,000 lb.	54,000 lb.	69,000 lb.	44,800 lb.	9,200 lb.	43,900 lb.	10,100 lb.
4565	500	4.3	150 gal.	294+TAG	20,000 lb.	20,000 lb.	14,000 lb.	54,000 lb.	69,000 lb.	44,800 lb.	9,200 lb.	43,900 lb.	10,100 lb.
4598	500	4.3	150 gal.	294+TAG	20,000 lb.	20,000 lb.	14,000 lb.	54,000 lb.	69,000 lb.	44,300 lb.	9,700 lb.	43,400 lb.	10,600 lb.

Lengths, heights, widths and dry weights are approximate. Weight will vary based on optional equipment added to the above base weight.

GAWR: Gross Axle Weight Rating is the maximum permissible weight for an axle.

GVWR: Gross Vehicle Weight Rating is the maximum permissible weight for a fully loaded motor coach.

GCWR: Gross Combination Weight Rating is the value specified by the manufacturer of the vehicle as the maximum allowable loaded weight of this motor coach and any towed trailer or towed vehicle.

UVW: Unloaded Vehicle Weight is the weight of this motor coach as built at the factory with full fuel, engine oil and coolants. Does not include cargo, fresh water, propane gas or dealer-installed accessories.

NCC: Net Carrying Capacity is the maximum weight of all occupants, including the driver, personal belongings, food, fresh water, waste water, propane gas, tools, tongue weight of towed vehicle, dealer-installed accessories, etc., that can be carried by the motor coach.

**Specifications supplied by the chassis manufacturer.*

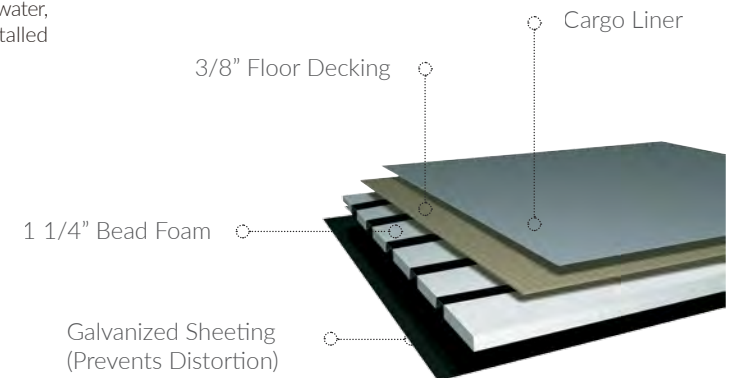
Mountain Aire R-Values:

Roof R-Value = 24

Sidewall R-Value = 11

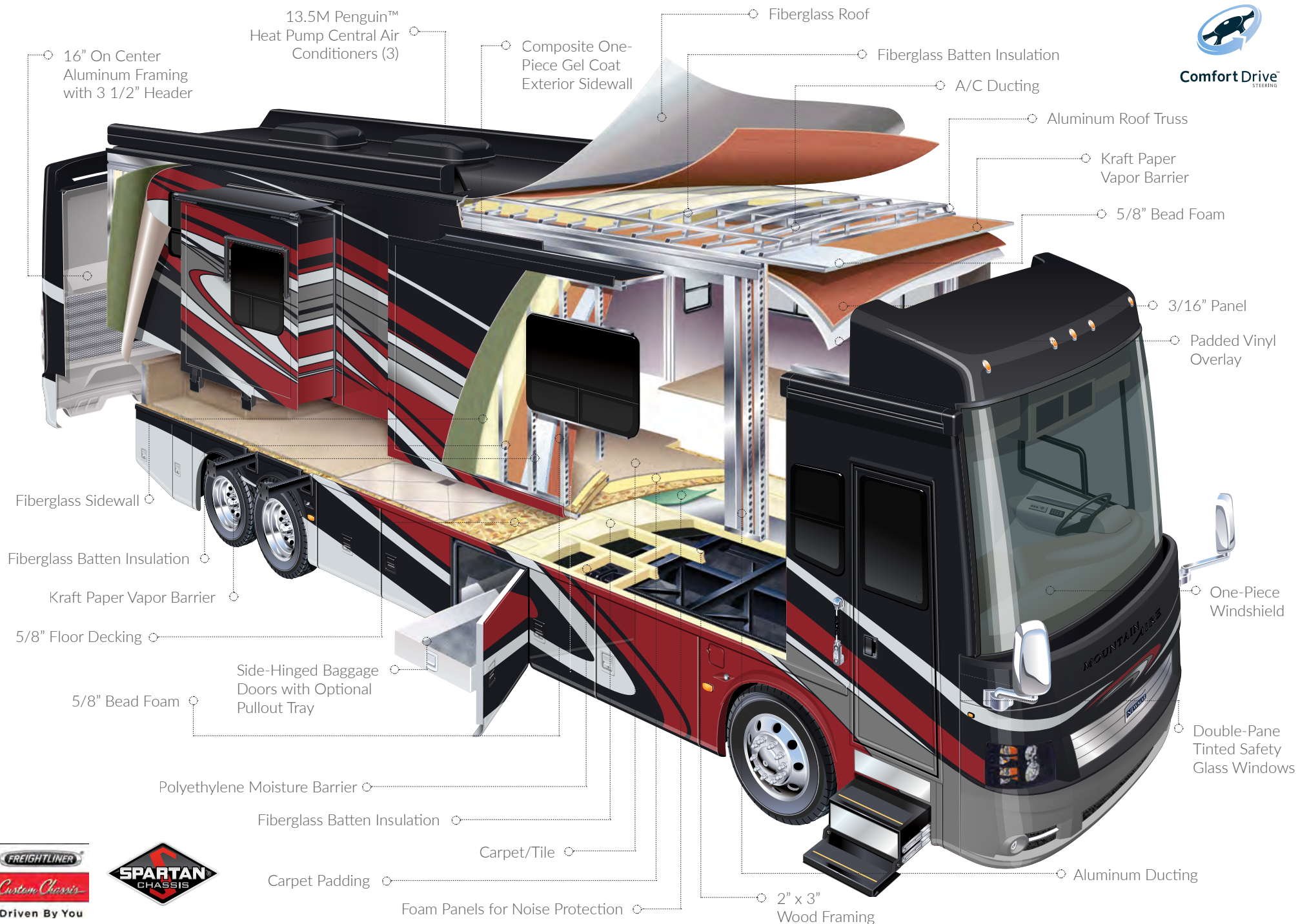
Floor R-Value = 16

Basement R-Value = 4





Comfort Drive
STEERING



Driven By You

Standard



Optional

FEATURES & OPTIONS



CHASSIS FEATURES

Freightliner® Passive Steer Tag Axle SL Chassis with 500 HP Cummins® ISX Diesel Engine

Comfort Drive™ Steering with Adjustable Controls

Polished Aluminum Wheels

Recessed Fuel Fills with Crossover to Fill from Either Side

Back-Up Alarm

Anti-Lock Braking System

In-Dash Electronic Chassis Information Center

Air Leveling Control System

OPTIONS

Spartan® Passive Steer Tag Axle K2 Chassis with 500 HP Cummins® ISX Diesel Engine

Trip Travel Information

Vorad® Adaptive Cruise System



AIR CONDITIONING AND HEATING

Three 15M Penguin™ Heat Pump Air Conditioners with Remote Control Thermostat

Hydronic Zone Diesel Heating System with Continuous Hot Water

Wall-Mounted Heating and Air Conditioning Sensors

Air Conditioning Drainage System on Roof

Driver and Passenger Dash Overhead Ventilation System

OPTION

Electric Radiant Heat Installed Below Floor Tile



APPLIANCES

30" Convection Microwave with Recessed Two-Burner Gas Cooktop

Countertop-Matching Flush Gas Cooktop Cover

Norcold® 12 Cf. Refrigerator with Icemaker & Water Dispenser

Prep for Two-Piece Washer/Dryer

Fireplace in Living Area*

OPTIONS

Dishwasher in a Drawer Located Below Cooktop

All Electric, Flush-Mount Induction Cooktop, Whirlpool® 19.7 Cf. Refrigerator, 4 Extra Batteries, 2800-Watt Inverter

All Electric, Flush-Mount Kenyon® Cooktop, Whirlpool® 19.7 Cf. Refrigerator, 4 Extra Batteries, 3000-Watt Inverter

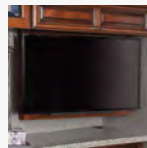
Whirlpool® 19.7 Cf. Refrigerator with Two Extra Batteries

Dometic® Freezer on Pullout Tray in Exterior Compartment

Whirlpool® Two-Piece Stacked Washer/Dryer

Central Vacuum with Tool Kit

Dometic® 3.77 Cf. Freezer on Pullout Tray in Exterior Baggage Compartment



AUDIO, VIDEO AND ACCESSORIES

Sony® LED TV & Blu-ray/DVD player in Living Area and Bedroom (Sizes Vary Per Floor Plan)

Sony® 48" LED with Televator TV in Living Area*

Bose® CineMate® Home Theater System

AM/FM/CD Dash Radio with Harman/JBL® 360-Watt Sound System with Subwoofer

High Definition Wiring

Color Rearview Monitor System with Audio

Two Bedroom Radio Speakers

Satellite Prep on Roof

TV Jack and 110-Volt Receptor in Door-Side Exterior Storage Compartment

Winegard® Crank Up TV Antenna

Infra-Red Repeater System for Operating Audio/Video Components

OPTIONS

Sirius® Satellite Radio Capability (Does Not Include Monthly Subscription)

Dash Radio with Touch Screen Navigation System

Sony® 40" LED TV in Front Overhead

48" Televator TV Behind Door-Side Non-Sleeper Fixed Sofa

Exterior Entertainment Center in Sidewall with Sony® 40" LED TV and Soundbar

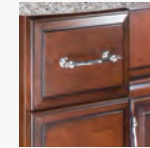
Exterior Entertainment Center in Storage Compartment with 40" Sony® LED TV and Soundbar

Two 11" LCD Flip-Down Monitors and DVD Players with Headphones, One at Each Bunk*

Winegard® Rayzar Automatic Digital TV Antenna

Winegard® Automatic Satellite Dish

KVH® In-Motion Dome-Shaped Satellite Dish



CABINETS AND FURNITURE

Sable Maple Cabinetry with Mitered Raised Panel Glazed Doors

Concealed Hinges on Cabinet Doors

High-Polish Solid-Surface Countertop in Kitchen with Under-Mounted Stainless Steel Sink

High-Polish Solid-Surface Countertop in Bathroom and Bedroom

Flexsteel® Sofa and Front Seats with Integrated Seat Belts

Six-Way Adjustable Heated Driver/Passenger Seats with Power Lumbar Support and Power Footrest

Passenger Seat Work Station

Pullout Pantry Shelves*

Cedar Paneling in Bedroom Wardrobe

OPTIONS

Carmel Glazed Cherry Cabinets

Manhattan Glazed Maple Cabinets

Wicker Glazed Maple Cabinets

Euro-Booth Dinette and Two Folding Chairs

Off-Door Side Extenda Flex Dinette

Combination Desk/Dinette with Rollaway table, 2 Fixed and 2 Folding Chairs

Combination Desk/Dinette with Buffet Table, 2 Fixed and 2 Folding Chairs

Door-Side Fold & Tumble Sofa with Air Mattress, Off-Door Extenda L-Sofa

Door-Side Fold & Tumble Sofa with Air Mattress, Off-Door Side Recliners with Lampstand

Two Off-Door Side Recliners with Lampstand & Door-Side Televator TV

Door-Side Jackknife Sofa in Place of Fixed Sofa

Sofa/Euro-Booth Dinette Ensemble

Power Flip-Up Sofa in Bed Base with Sleep Number® Premier Air Mattress

Flexsteel® Extenda Flex Dinette

Sleep Number® Premier Air Mattress



ELECTRICAL FEATURES

- 10.0 Kw Cummins® Onan® Diesel Quiet Series Generator on Hydraulic Slide-out Tray
- 50-Amp Electrical Service with Flexible Cord and Automatic Transfer Switch
- 12-Volt Auxiliary Receptor on Dashboard
- Four 6-Volt House Batteries on Pullout Tray
- 10-Watt Solar Panel to Charge Chassis Battery
- 3000-Watt Inverter
- Midship Side Turn Signals
- Accent Lights in Feature Ceiling, Slide-out Fascia Trim, Lambrequins, Kitchen, and Bed Base
- Automatic Generator Start on Low Battery or Temperature Setting
- Battery Disconnect Switch for House Battery
- Emergency Engine Start Switch
- Engine Block Heater
- Exterior Security Lights
- Manually Operated Hold-to-Run Slide-out Switch
- USB Charger at Dinette & Bedroom Nightstand
- LED Lighting in Exterior Storage Compartments, Controlled by an Interior Master Switch
- Energy Management System
- Power-Rewind Reel with 50' Cord
- Recessed Docking Lights
- Secondary Multiplex Touch Screen in Bedroom
- SilverLeaf Multiplex Electrical Wiring System
- Solar Prep Wire from Roof to House Battery Compartment

OPTIONS

- Eight AGM House Batteries*
- 12.5 Kw Onan® Diesel Generator
- LED Lights Installed Under Door-Side Slide-outs



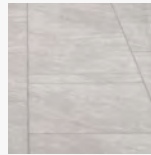
EXTERIOR FEATURES

- Full-Paint Masterpiece Finish™ with Cut & Buff and Nano Shield Protection on Front Cap
- Convex Chrome Exterior Mirrors with Remote Control, Defrost, Turn Signals & Side-View Cameras
- Rear Protective Tow Guard

- Stainless Steel Exterior Trim Pieces and Kick Panel at Entrance Door
- Painted Power Baggage Door Locks, Keyless Entry Door with Touch Pad & Doorbell
- Undercoating
- Lit Exterior Storage Compartments with Cargo Liner
- Automatic Step for Entrance Door
- Rear Hitch for Towing Car
- Hydraulic Leveling Jacks

OPTIONS

- Chrome Power Baggage Door Locks, Keyless Entrance Door with Touch Pad & Doorbell
- Stainless Steel Trim Kit, Chrome Power Baggage Door Locks, Keyless Entrance Door with Touch Pad & Doorbell
- Large Storage Tray with Access from One Side or Either Side

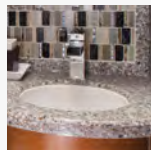


INTERIOR FEATURES

- Pompeii Collection by Ultrafabrics®
- Designer Feature Ceiling
- Cathedral Ceiling with Added Height to Rear Bathroom Floor Plans*
- Auto Motion Power Shades at Windshield, Driver & Passenger Side Windows
- Auto Motion Power Window Shades and Lambrequins
- Tile Floor in Kitchen, Bathroom, Bedroom and Living Areas
- Hardwood Raised Panel Interior Passage Doors
- Shoe Storage Shelves Recessed into the Rear Cap Wardrobe
- 10 Bc Fire Extinguisher, Smoke Detector and Carbon Monoxide Detector

OPTIONS

- Safe Located in Bedroom Wardrobe
- Silhouette Power Window Shades
- Carpet in Bedroom in Place of Tile



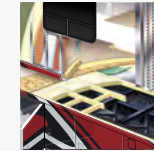
PLUMBING AND BATH FEATURES

- Demand Water System
- Solid-Surface Shower Walls with Glass Door
- Dometic® 321 China Bowl Stool or Macerator Stool*
- Exterior Shower
- Sewage Holding Tank Rinse
- Water Filter for Entire Unit
- Automatic Fill For Fresh Water Tank

FEATURES & OPTIONS

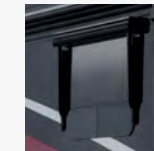
OPTIONS

- Assist Handle in Shower
- Fold-Down Shower Seat
- Power Water Hose Reel
- Hot Water Line to Generator Area
- Black China Bowl Stools
- RV Sani-Con System



CONSTRUCTION FEATURES

- Fiberglass Roof with Walkable Decking & Integrated Gutter Rail
- Gel Coated Fiberglass Exterior Sidewalls, Front and Rear Caps
- Aluminum-Frame Sidewalls & Roof Construction, 16" on Center
- 5/8" Foam Insulation Laminated in Sidewalls & Ceiling
- Mechanical Lock Arms on All Non Flat Floor Slide-Out Rooms
- Polar Pak R19 Batten Insulation in Roof



WINDOWS, AWNINGS AND VENTS

- One-Piece Tinted Windshield
- Frameless Double-Pane Tinted Safety Glass Windows
- Fan-Tastic® Vent with Rain Sensor in Kitchen and Bathroom
- Girard® G2000 Power Side Awning with Wind Sensor, Remote Control and LED Lights
- Dometic® Slide-out Covers & Power Entrance Door Awning with LED Lights*
- Skylight Above Shower*
- Driver-Side Power Window
- Egress Door in Rear Bathroom*
- Hardwood Cover on Fan-Tastic® Vent in Kitchen

OPTIONS

- Additional Girard® G2000 Side Awning on Door Side
- Two Nova Side Awnings, Slide-out Covers, Entrance Door & Power Window Awnings

*Check With Dealership On Floor Plan Availability



OUR PARTNERS

Where the Finest Names in Quality and Performance are Along for the Ride

To ensure that you experience only the best in comfort, control and unsurpassed convenience in our incomparable family of Luxury Coaches, Newmar partners with the most prestigious names in mobile lifestyle, entertainment and technology. These brands

are leaders in their fields and legends in providing customers with new, unsurpassed levels of quality and reliability. Best-in-class performance from names you can trust. At Newmar, that's our difference. And our promise.



THE MILLER WAY

*Industry-Leading Quality,
From Our Family to Yours*

For the Miller family, RVs are what we build because RVing is what we love. To us, the RV lifestyle is more than our business – it's our passion. Our customers choose Newmar time and time again because they trust in us, our products and our people.

I myself am proud to own a Dutch Star designed, assembled and backed by artisans, engineers and service specialists who represent the best our industry has to offer. Men and women who have spent an average of 13 years as members of the Newmar family. Without them, The Newmar Difference simply wouldn't exist.

Matt Miller
Newmar President, lifelong motor coach enthusiast

MOUNTAIN AIRE

NEWMAR EXPRESS LIMITED WARRANTY

Every Mountain Aire diesel motor coach is backed by Newmar's one-year limited warranty/unlimited miles. Ask your Newmar dealer for details.

LIMITED FIVE-YEAR STRUCTURAL WARRANTY

If any part of your Newmar recreational vehicle superstructure (which is the steel/aluminum structure of the sidewall, roof or frame) fails to perform properly within five years from the date of purchase because of faulty workmanship or material supplied by Newmar, it will be repaired without charge for either parts or labor by Newmar. This structural warranty is available only to the original purchaser and is non-transferable.

Some features in our literature are optional. Colors and finishes are photographic representations. The actual materials may look different. Prices, specifications and floor plans are subject to change at Newmar's discretion, without prior notice or obligation. Please see your dealer for actual samples and specifications.



WHEN YOU KNOW THE DIFFERENCE SM