



BAY SPORT



STAR/ ORT



50 YEARS HAVE TAUGHT US...

QUALITY RESULTS TAKE QUALITY TIME.



LEADING THE WAY FORWARD

At Newmar, our first 50 years have taught us that the brightest futures are realized by those willing to blaze a new trail. Lead rather than follow. And reject cookie-cutter imitation in favor of cutting-edge innovation. That's why we are committed to spending the next half century creating handcrafted motor coaches that go above and beyond their batch-built competition. Coaches designed and engineered to help you live the RV lifestyle to the absolute fullest. Join us, and discover the Newmar difference for yourself.

A handwritten signature in dark ink, appearing to read "Matt Miller".

Matt Miller, President





Full-paint Masterpiece™ Finish | Mustang Exterior | Floor Plan 3307

THE OPEN ROAD IS CALLING

Redesigned for 2018, Bay Star Sport combines unexpected extras with unmatched Newmar quality, the result of a 10-day assembly, paint, and inspection process. Inside, an all-new instrument panel houses a USB outlet, JBL® cockpit audio, and a rearview monitor with sound. There's even an available Rand McNally® navigation system and a stowable passenger workstation.

The industry's best

Mustang full-paint Masterpiece™ finish, frameless windows

Tried and true

Ford® F-53 chassis with a 320-HP V10 engine

WHERE EVERYONE BELONGS

From a Vizio® LED TV to the pair of optional Wi-Fi solutions, family-friendly accommodations are everywhere inside the Bay Star Sport. Select floor plans can be had with a dropdown bunk bed and either a Hide-A-Bed or Fold-N-Tumble sofa, while floor plan 3307 is available with both a dinette booth and a Flexsteel® couch that transforms into a set of bunk beds in seconds.

Welcome home

Floor plan 3307 with Mustang décor, travertine-patterned vinyl flooring

Enjoy together

Available dinette booth



Mustang Décor with Astoria Glazed Maple Cabinetry | Floor Plan 3307



HELP YOURSELF TO MORE

Decorated by a mosaic backsplash with chrome accents, the kitchen is where you will find everything you need to eat well away from home, like a three-burner cooktop with oven, an over-the-range microwave, and a Dometic® refrigerator. A solid-surface countertop surrounds the stainless steel double-bowl sink, while floor plan 3307 adds an extra storage pantry.

Made in Nappanee

Astoria glazed maple cabinetry
with concealed hinges

It's your choice

New Calypso wood finish
also available (not shown)



YOUR PRIVATE ESCAPE

Opt for the available LED TV and DVD player and take in the latest Hollywood blockbusters from inside of a bedroom that can be shielded from the rest of the cabin using a uniquely engineered pocket door. A large rear window is included with select floor plans, and a backlit fascia covers each slideout. Over in the master bath, a solid-surface wood vanity provides plenty of storage.

Rest easy

Queen bed with quilted bedspread and accent pillow

Feel restored

36" x 30" shower with skylight and power vent





MADE FOR MAKING MEMORIES

Donning all-new front and rear caps with concealed hinges, a Carefree of Colorado® power side awning, and DuraShield™ front cap paint protection, the 2018 Bay Star Sport looks good in the great outdoors. And it's a breeze to drive, thanks to an independent front suspension, Bilstein™ shock absorbers, cruise control, and available side-view cameras.

Quiet power

Standard Cummins®
Onan generator

The little things

Lit exterior storage,
automatic entrance-door steps



EXTERIOR & INTERIOR DÉCOR



MUSTANG EXTERIOR

Awning Color: Linen Tweed



MUSTANG INTERIOR

a. Furniture/ Fabric b. Carpet c. Counter Top



PALOMINO EXTERIOR

Awning Color: Charcoal Tweed



PALOMINO INTERIOR

a. Furniture/ Fabric b. Carpet c. Counter Top

BAY STAR SPORT FLOOR PLANS



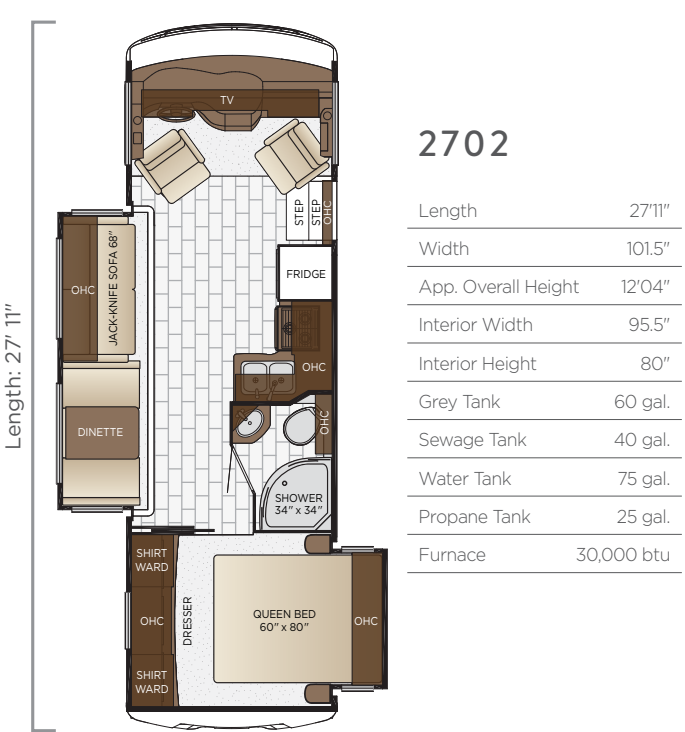
ASTORIA GLAZED MAPLE



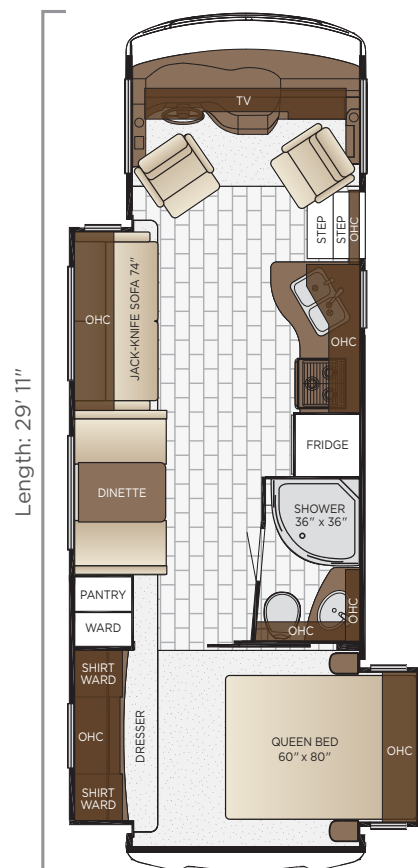
SIENNA GLAZED MAPLE



CALYPSO GLAZED MAPLE

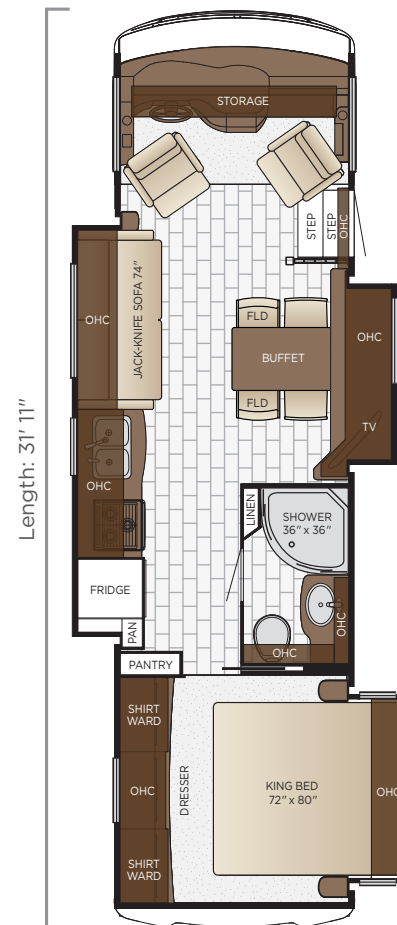


BAY STAR SPORT



2903

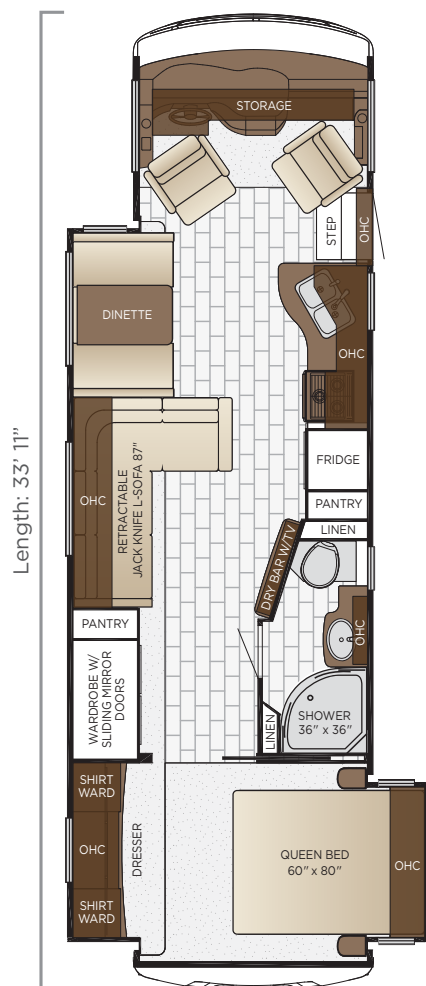
| | |
|---------------------|------------|
| Length | 29'11" |
| Width | 101.5" |
| App. Overall Height | 12'04" |
| Interior Width | 95.5" |
| Interior Height | 80" |
| Grey Tank | 60 gal. |
| Sewage Tank | 40 gal. |
| Water Tank | 75 gal. |
| Propane Tank | 25 gal. |
| Furnace | 30,000 btu |



3113

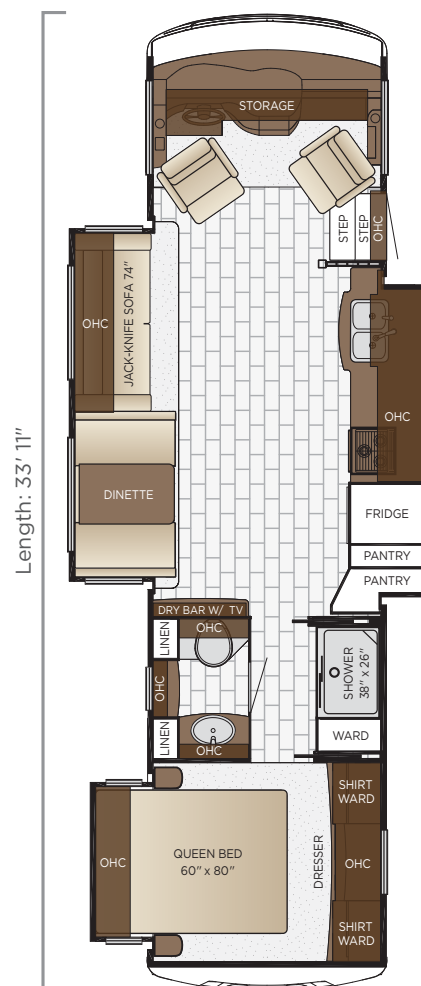
| | |
|---------------------|------------|
| Length | 31'11" |
| Width | 101.5" |
| App. Overall Height | 12'04" |
| Interior Width | 95.5" |
| Interior Height | 80" |
| Grey Tank | 60 gal. |
| Sewage Tank | 40 gal. |
| Water Tank | 75 gal. |
| Propane Tank | 25 gal. |
| Furnace | 30,000 btu |

FLOOR PLANS



3307

| | |
|---------------------|------------|
| Length | 33'11" |
| Width | 101.5" |
| App. Overall Height | 12'04" |
| Interior Width | 95.5" |
| Interior Height | 80" |
| Grey Tank | 60 gal. |
| Sewage Tank | 40 gal. |
| Water Tank | 75 gal. |
| Propane Tank | 25 gal. |
| Furnace | 35,000 btu |



3312

| | |
|---------------------|------------|
| Length | 33'11" |
| Width | 101.5" |
| App. Overall Height | 12'04" |
| Interior Width | 95.5" |
| Interior Height | 80" |
| Grey Tank | 60 gal. |
| Sewage Tank | 40 gal. |
| Water Tank | 75 gal. |
| Propane Tank | 25 gal. |
| Furnace | 35,000 btu |



EXTERIOR FEATURES

| |
|--|
| Exterior Masterpiece Full Painted Graphics with Clearcoat Finish |
| DuraShield™ Protection on Front Cap |
| Lighted Exterior Storage Compartments |
| Automatic Step for Entrance Door |
| Convex Exterior Mirrors |
| Rear Hitch for Towing Car |
| Assist Handle at Entrance Door |
| Undercoating |
| Mud Flaps |
| OPTIONS |
| Convex Exterior Mirrors with Defrost and Remote Control |
| Hydraulic Leveling Jacks |
| Rear Ladder |
| Flag Pole Bracket |
| Temporary Windshield Protection for Transport Only |

CONSTRUCTION FEATURES

| |
|---|
| BriteTEK™ Roof with Walkable Deck |
| Gelcoated Fiberglass Exterior Sidewalls, Front & Rear Caps |
| Aluminum-Frame Sidewalls & Roof Construction, 16" on center |
| 5/8" Foam Insulation Laminated in Sidewalls & Ceiling |

WINDOWS, AWNINGS & VENTS

| |
|---|
| One Piece Tinted Windshield |
| Frameless Single Pane Tinted Safety-Glass Windows |
| Power Vent in Bathroom |
| Skylight Above Shower |
| Carefree Travel'r Side Awning |
| OPTIONS |
| Slideout Covers |
| Frameless Double-Pane Tinted Safety Glass Windows |
| Rear Window in Bedroom |
| Power Vent in Kitchen |

CHASSIS FEATURES

| |
|--|
| Ford® F-53 Chassis 18,000 lb. on 27' Floor Plans |
| Ford® F-53 Chassis 20,500 lb. on 28'-33' Floor Plans |
| Cruise Control |
| Tilt Steering Wheel |
| Stainless Steel Wheel Simulators |

AIR CONDITIONING & HEATING

| |
|--|
| 13.5M Brisk® Central Air Conditioner |
| Dash Heater and Air Conditioner |
| Propane Gas Furnace with Ducted Heat |
| OPTIONS |
| 15.0M Penguin™ Heat Pump Central Air Conditioner |
| Driver & Passenger Overhead Dash Fans |
| Two 13.5 Penguin Heat Pump A/C, 5.5 Onan Generator, 50 Amp Electrical Service with Energy Management System* |

ELECTRICAL FEATURES

| |
|--|
| 4.0 kW Cummins Onan® Generator with Remote Switch and Automatic Changeover |
| 30 Amp Electrical Service with Flexible Cord and Automatic Transfer Switch |
| Two 12 Volt House Batteries |
| Manual Battery Disconnect Switch for House Battery |
| 12 Volt Auxiliary Receptacle on Dashboard |
| 45 Amp Converter |
| Daytime Running Lights |
| Emergency Engine Start Switch |
| LED Interior Lighting |
| Manually Operated Hold-To-Run Slideout Switch |
| Cable TV Connection |
| USB Outlet at Dash for Driver Use |
| OPTIONS |
| 1000 Watt Inverter Run to TVs* |

PLUMBING & BATH FEATURES

| |
|--------------------------------------|
| Demand Water System |
| Sewage Holding-Tank Rinse |
| Water Heater Bypass System |
| Dometic® 310 China Bowl Stool |
| ABS Shower Surround with Shower Door |
| Systems Monitor Panel |

INTERIOR FEATURES

| |
|--|
| Vinyl Ceiling Panels |
| Pleated Window Shades |
| Decorative Wall Art |
| Mini Blinds in Kitchen and Bathroom Windows |
| Vinyl Floor in Kitchen, Living Area and Bathroom |
| Carpeting in Bedroom and on Slideout Floors |
| Interior Assist Handle at Main Entrance Door |
| Quilted Bedspread and Accent Pillow |
| Inlaid Six Panel Design Interior Passenger Doors |
| Auto Motion Power Shade at Windshield & Manual Shades at Driver & Passenger Side Windows |
| Dash Panel Color Coordinated ABS |
| 10 Bc Fire Extinguisher, Smoke Detector, Propane and Carbon Monoxide Detector |

CABINETS & FURNITURE

| |
|---|
| Calypso Glazed Maple Mitered Designer Cabinet Doors- Matte Finish |
| Concealed Hinges on Cabinet Doors |
| Drawers with Full Extension Guides |
| Polished Solid Surface Countertop in Kitchen with Stainless Steel Sink |
| Solid Surface Countertops in Bathroom and Bedroom |
| Flexsteel® Delux Leather Sofa and Front Seats |
| Passenger Seat Work Station |
| Lifts on Bed Top |
| Smooth-Top Mattress |
| OPTIONS |
| Astoria Glazed Maple Mitered Designer Cabinets-Opt. Matte Finish |
| Sienna Glazed Maple Mitered Designer Cabinets-Opt. Matte Finish |
| Drop Down Bunk Bed Over Driver/Passenger Seats with Electric Release Latches* |
| Plush Pillow Top Mattress |
| Folding Cockpit Table |
| Side Folding Hide-A-Bed Sofa 87** |
| 74" Fold-N-Tumble with Air Mattress |
| 84" Jackknife Sofa in Place of 84" Jackknife L-Sofa* |
| 87" Bunk Sofa* |
| Buffet Dinette |
| Combo Buffet Dinette, Two Fixed/Two Folding Chairs |
| 68" Jackknife Sofa with Removable Table 2812 Only |

APPLIANCES

| |
|--|
| Three-Burner Range with Oven |
| Range Hood with Light and Fan |
| Microwave |
| Dometic® 6 Cf. Refrigerator with Wood Paneling Front |
| 6 gal. Gas Water Heater with Direct Spark Ignition |
| OPTIONS |
| Norcold 12 Cf. 4-Door Refrigerator with Icemaker* |

AUDIO, VIDEO & ACCESSORIES

| |
|---|
| LED TV in Living Area (TV Sizes Vary per Floor Plan) |
| Dash Radio/CD Player with Harman/JBL 180 Watt Sound System |
| Rearview Colored Monitor System with Audio |
| Winegard Digital TV Antenna |
| TV Jack and 110 Volt Recept in Door Side Exterior Storage Compartment |
| Satellite Dish Prep on Roof |
| OPTIONS |
| 32" LED TV in Bedroom |
| DVD Player with Coax Switcher |
| Side View Cameras Displayed onto Rearview Monitor Screen |
| WiFiRanger Skypro Pack Router |
| Winegard Cellular In Motion WiFi |
| Xite Dash Radio, 6" Monitor with Rand McNally Navigation |
| Winegard Cellular in Motion WiFi Prep |

***Check with dealership on floor plan availability.**

The content in our literature depicts and describes products that are subject to change. For the most recent images and information, please visit NewmarCorp.com.

THE NEWMAR CUSTOMER EXPERIENCE

The Newmar Difference goes beyond our industry-leading motor coaches to deliver you with an unrivaled ownership experience.



QUALITY FROM THE START

Every Newmar is crafted one at a time by folks who have spent an average of eight years building them. And each coach we assemble must undergo more than 1,000 quality checks before ever leaving the Newmar factory.



EVERYTHING IN ONE PLACE

As a Newmar owner, you'll find resources specific to your coach through **Newgle**, an easy-to-use knowledge base that houses everything from user guides to technical support documents.



FRIENDS FOR LIFE

Join Newmar and meet fellow owners through the **Newmar Kountry Klub**, a top social club for RV travelers. Or, connect using the world's only social sharing network created for RVers, by RVers — **RoadLens.io**.



SEAMLESS SERVICE

Available 24/7, our service specialists guarantee dealer repair authorization within four hours, and all in-stock parts ship the same day, free of charge. If a part is out of stock, we'll pull it from our production floor or order the part from the appropriate vendor right away.



ROCK-SOLID WARRANTY COVERAGE

All models include a 1-year/unlimited mileage limited warranty and a 5-year, non-transferable structural warranty that covers your vehicle's superstructure in the event it fails to perform. Ask your Newmar dealer for details.

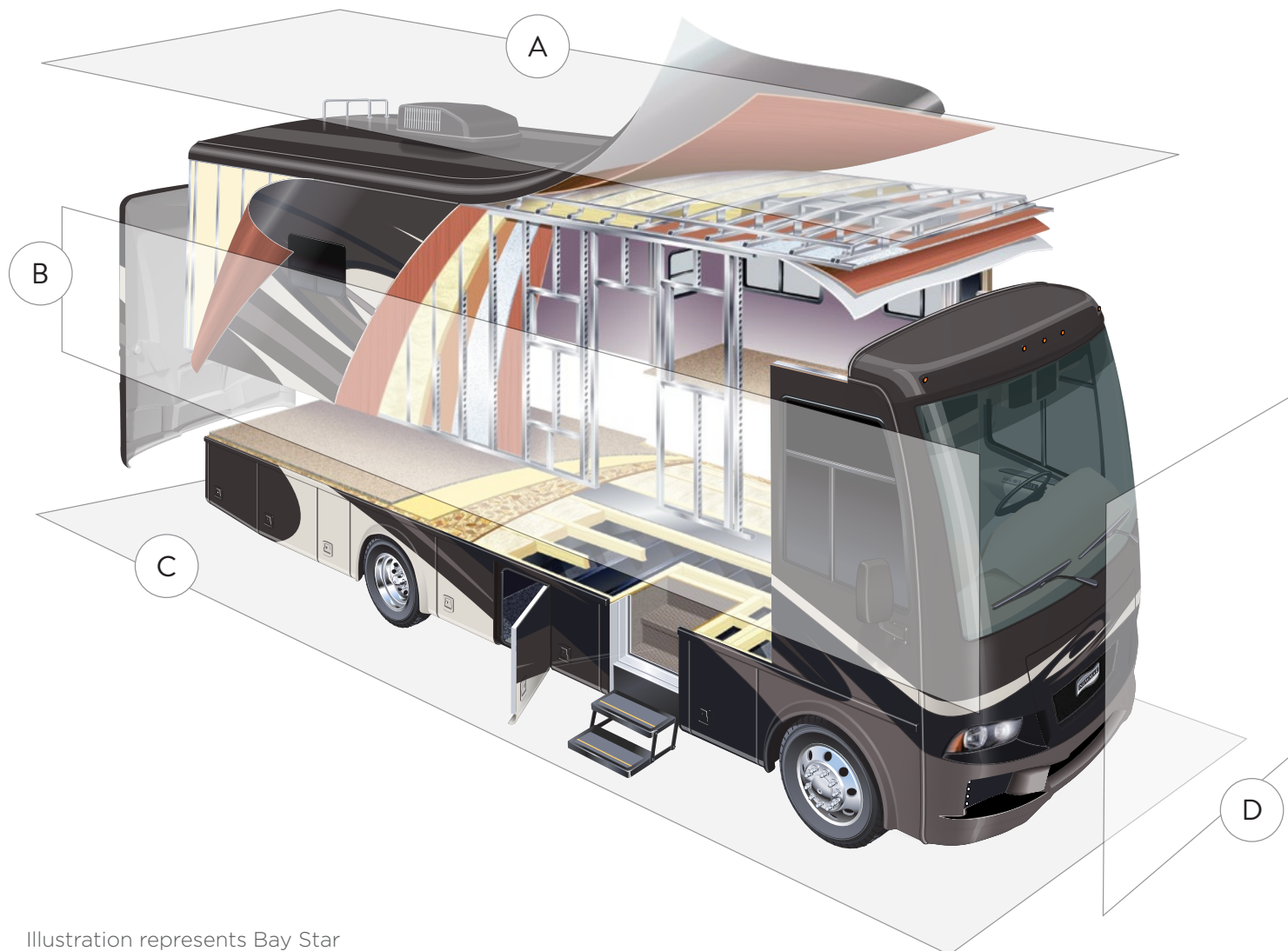


Illustration represents Bay Star

A. ROOF

BriteTEK™ Roof with
Walkable Decking

Batten Insulation

A/C Ducting

16" on Center Aluminum
Framing

Kraft Paper Vapor Barrier

5/8" Bead Foam

3/16" Panel

Padded Vinyl Overlay

B. SIDEWALL

Interior Wall Panel

5/8" Bead Foam

Kraft Paper Vapor Barrier

Batten Insulation

Composite One-Piece
Gelcoat Exterior Sidewall

Aluminum Framing

C. FLOOR

Carpet

Carpet Padding

5/8" Floor Decking

Batten Insulation

16" on Center Wood Framing

Polyethylene Moisture Barrier

D. EXTERIOR

13.5M Brisk Central
Air Conditioner

One-Piece Windshield

Frameless, Tinted Safety-Glass
Windows

OUR PARTNERS

Newmar Quality Begins With The Company We Keep

Newmar only works with suppliers dedicated to providing our customers with unrivaled quality, comfort and convenience. Best-in-class performance from names you can trust. At Newmar, that's our difference, and our promise.

BASF

The Coatings division of BASF is a global expert in the development and production of innovative and sustainable OEM and refinish coatings. Coatings by BASF – solutions beyond your imagination.

Flexsteel

Flexsteel Recreation offers innovative furniture designed for a life that rarely sits still. Comfortable and space-saving, Flexsteel furniture ensures your RV is always ready for dining, sleeping or hosting guests.

Freightliner Custom Chassis

Freightliner Custom Chassis are renowned for their exceptional ride, excellent maneuverability, advanced chassis technology, and nationwide 24/7 factory-direct support.

Industrial Finishes

Industrial Finishes has supported RV manufacturers for over four decades. The Industrial Finishes paint process delivers uncompromising quality, providing your coach with a true Masterpiece™ finish.

Sony

Beautifully designed Sony TVs & Blu-ray players deliver an immersive picture and true-to-life sound. Revolutionize every aspect of your home entertainment experience with Sony.

Spartan Motors

An American company with over 30 years of experience designing and manufacturing the premier motorhome chassis, which deliver superior performance, exceptional safety ratings, and industry-leading technology.





THE NEWMAR LEGACY

50 years, built one by one.

Driven to engineer and build the highest-quality RVs the world had ever seen, Marvin Miller and Marvin Newcomer founded Newmar Corporation in 1968.

The pair set up shop in the small Midwest woodworking town of Nappanee, Indiana, where they discovered the people who would establish Newmar as a leading RV manufacturer over the next half century. Artisans and engineers, product designers and quality-control experts to whom being the best is more important than being the biggest.

As we move toward 100 years as a company, our products will continue to evolve. But one thing that will never change is our commitment to hand-crafting excellence, one coach at a time.



Bay Star



NEWMAR CORPORATION | 355 N DELAWARE ST | PO BOX 30 | NAPPANEE, IN 46550-0030 | 574-773-7791 | FAX 574-773-2895
www.newmarcorp.com