

Newmar | 2020 Canyon Star  
Gas Motor Coach

32.7765° N, 79.9311° W

# 2020 Canyon Star

*Gas Motor Coach*



Say *yes* to adventure.



Where will *your coach* take you?

*Juliana and Grace exploring the Lowcountry.*



## *The Bar Has Been Raised — 2020 Canyon Star*

The 2020 Canyon Star is designed to impress from any angle. Outside, you have the option to choose from three full-paint Masterpiece™ finishes. Inside, nine available floor plans—including toy hauler, patio, and wheelchair-accessible options—ensure there's a layout that's perfect for your lifestyle. Further customization comes courtesy of four wood cabinetry stains, three interior décor selections, four flooring varieties, and an impressive list of available extras. Of course, the list of standard features goes above and beyond expectations too—just like Canyon Star, the world's most luxurious gas coach.

*Orleans full-paint Masterpiece™ finish*

## *Expectations* — *Exceeded*

Defined by its timeless appeal, the Canyon Star offers the best of both style and functionality. Step inside, and you're greeted by luxury vinyl tile flooring and redesigned Flexsteel® furniture. Awaiting you in the cockpit are six-way power captain's chairs, a passenger seat work station, and USB chargers for your devices. Keep an eye on your surroundings with the standard side- and rearview camera system. And with options like a two-piece washer and dryer, bunk beds, a fireplace, and more, your Canyon Star is designed to fulfill your wants and needs better than any other gas coach in its class.



*Floor plan 3722 with Orleans décor and Harbour/Newport glazed maple cabinetry*



## *A Space — with Style*

With Flexsteel® furniture available in optional recliners, theater seating, and ottomans, the Canyon Star living area is designed to provide ultimate comfort. Luxury vinyl tile flooring, custom-made wall sconces, and a hardwood slideout fascia lend sophisticated style, while LED lighting brightens the space. Standard entertainment features include a Samsung® LED TV with a Blu-ray/DVD player and a Bose® Bluetooth®-enabled soundbar, while optional Wi-Fi connectivity means you'll never go without your favorite shows and movies. In the master bath, a polished solid-surface sink top and a rectangular stainless steel sink lend a residential feel. For added convenience, select floor plans are outfitted with a well-appointed half-bath.





## *Feast — Your Eyes*

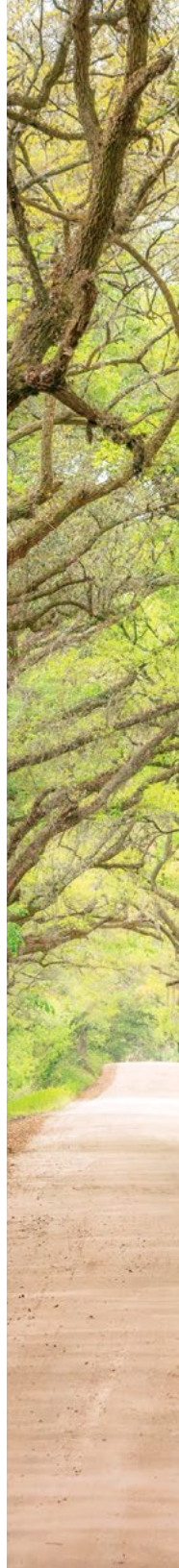
In the Canyon Star kitchen, good taste is everywhere you look. It starts with the polished solid-surface countertops and a stainless steel double-bowl sink, both of which are surrounded by a stylish new backsplash design. A 30" Whirlpool® convection microwave, three-burner gas cooktop, and handmade wood cabinetry can accompany options like a dishwasher and residential Whirlpool® refrigerator. Enjoy every meal at the available combination dinette/desk shown here, which doubles as work space when it's time to check your email.





## A Serene — Sanctuary

Thoughtfully designed to maximize relaxation, the Canyon Star bedroom is a dream come true. Enjoy a show or movie on the Samsung® LED TV with Blu-ray/DVD player, then drift off to sleep on a queen- or king-sized pillow top or available Sleep Number® adjustable mattress. A large dresser with full-extension drawer guides and a lit wardrobe afford you ample space for clothing and accessories. What's more, roomy nightstands provide a place for all of your nighttime essentials.





## *Designed — without Limits*

In Canyon Star 3911, discover a wheelchair-accessible layout that's outfitted with the features you need to travel more comfortably. It all starts with a fully integrated BraunAbility® power wheelchair lift for easier entrances and exits. Inside the coach, a 30"-wide aisleway permits increased maneuverability, while lowered countertops, switches, and appliances allow for ease of use. The bathroom is outfitted with a spacious roll-in shower and a roll-under sink. Furthermore, an optional power-adjustable bed and L-shaped dinette are offered.



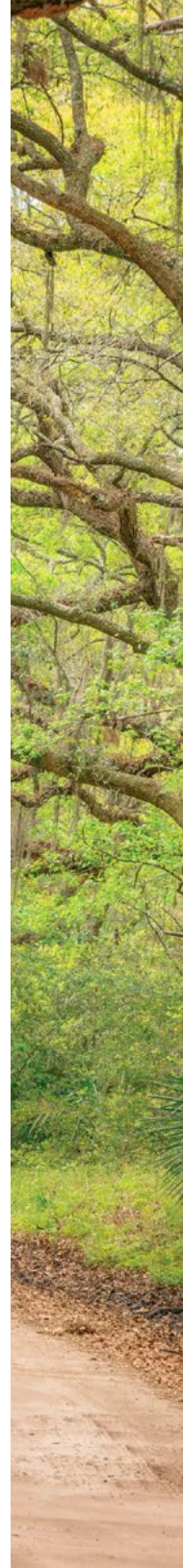
*30-inch-wide aisleway; 2016 interior/exterior design shown*





## *It All Comes — with You*

With the generous multipurpose space found in the rear of floor plan 3927, you'll have plenty of room for everything—and everyone—you want to bring along. With a variety of setup options, including a dinette and optional electric-lift bunk beds, you can outfit the space in the way that best serves your needs. Plus, a high-strength ramp and washable diamond-tread rubber flooring make 3927 ideal for loading and storing ATVs, motorcycles, and more.





## *The Luxury — of Convenience*

Trips to the laundromat can be crossed off your to-do list when you select the optional laundry center available in the rear of floor plan 3927. A stacked Splendide® washer and dryer are tastefully concealed in a cabinet, leaving plenty of floor space for both guests and gear. Three large windows and overhead lighting keep the space bright and airy. And with features like a Samsung® LED TV, foldable seats, and removable carpeting, the room can also be used as additional living space.



*2017 Excalibur paint shown*



*In a League —  
of its Own*

While Canyon Star's interior is rich with amenities, you'll find plenty of features outside too. A standard Dometic® WeatherPro awning provides outdoor living space both day and night thanks to new LED lighting. Options like an outdoor entertainment center help you enjoy your time at the campsite even more. Also featured are an automatic step at the entry door, hydraulic leveling jacks, a 5.5-kW Cummins Onan® generator, lit storage compartments, and side-hinged baggage doors.

# Exterior and Interior Décor



DUVAL EXTERIOR

*Awning Color: Charcoal Tweed*



DUVAL INTERIOR

*a. Furniture/Fabric b. Flooring c. Counter Top*



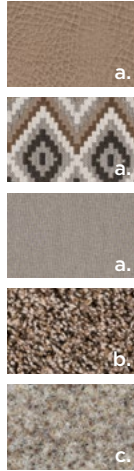
MADRAS EXTERIOR

*Awning Color: Linen Tweed*



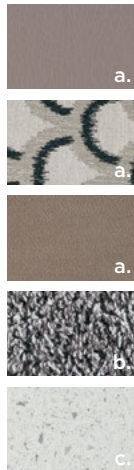
ORLEANS EXTERIOR

*Awning Color: Linen Tweed*



MADRAS INTERIOR

*a. Furniture/Fabric b. Flooring c. Counter Top*

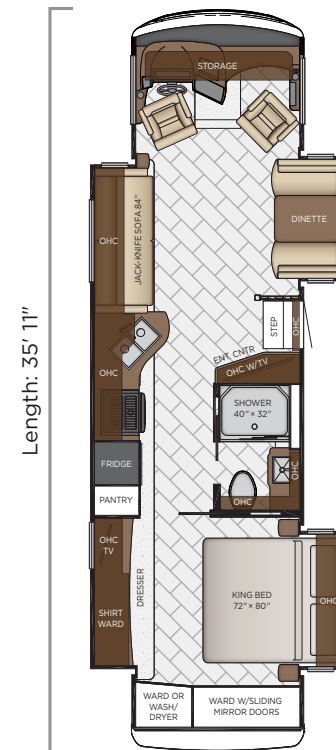


ORLEANS INTERIOR

*a. Furniture/Fabric b. Flooring c. Counter Top*

\*Available Hardwood Frame

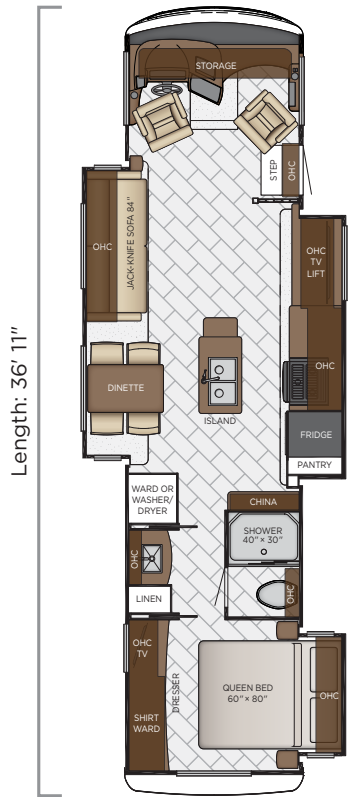
# Canyon Star



## 3513

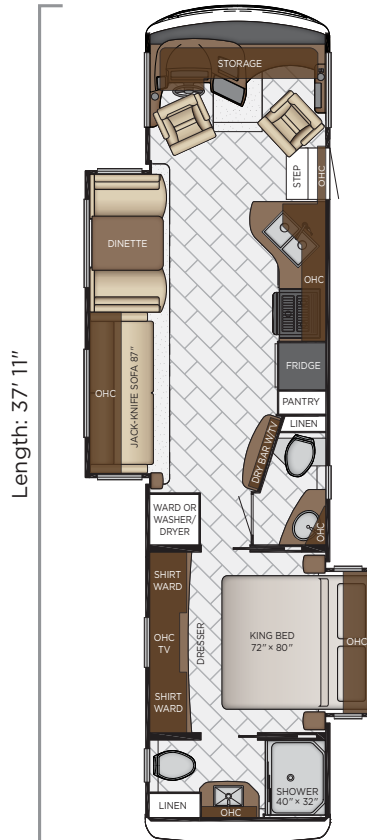
Length	35'11"
Width	101.5"
App. Overall Height	12'11"
Interior Width	95.5"
Interior Height	84"
Grey Tank	60 gal.
Sewage Tank	40 gal.
Water Tank	75 gal.
Propane Tank	25 gal.
Furnace	40,000 btu

# Floor Plans



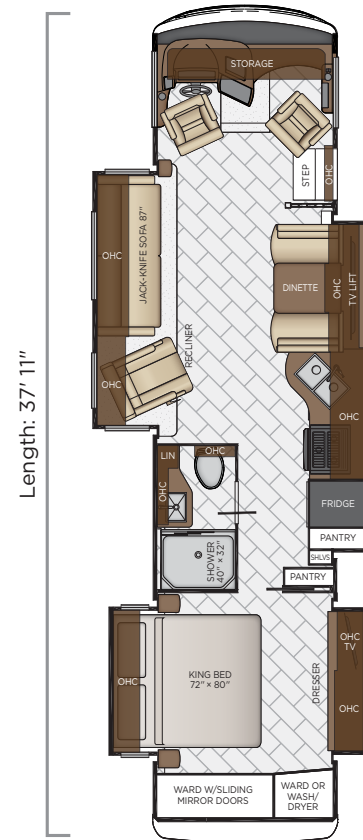
## 3627

Length	36'11"
Width	101.5"
App. Overall Height	12'11"
Interior Width	95.5"
Interior Height	84"
Grey Tank	60 gal.
Sewage Tank	40 gal.
Water Tank	75 gal.
Propane Tank	25 gal.
Furnace	40,000 btu



## 3710

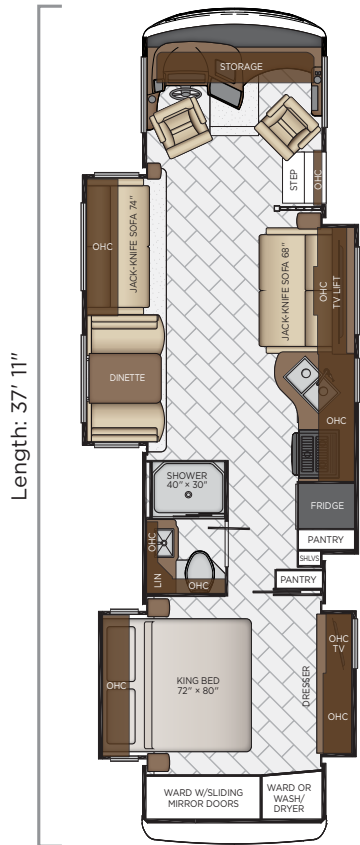
Length	37'11"
Width	101.5"
App. Overall Height	12'11"
Interior Width	95.5"
Interior Height	84"
Grey Tank	60 gal.
Sewage Tank	92 gal.
Water Tank	75 gal.
Propane Tank	25 gal.
Furnace	40,000 btu



## 3719

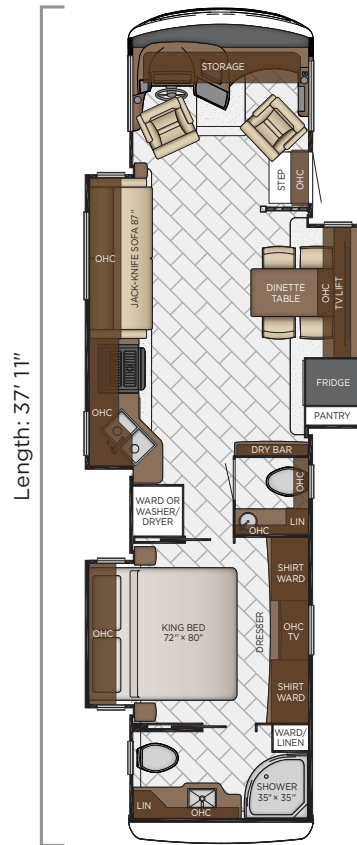
Length	37'11"
Width	101.5"
App. Overall Height	12'11"
Interior Width	95.5"
Interior Height	84"
Grey Tank	60 gal.
Sewage Tank	40 gal.
Water Tank	75 gal.
Propane Tank	25 gal.
Furnace	40,000 btu

# Canyon Star



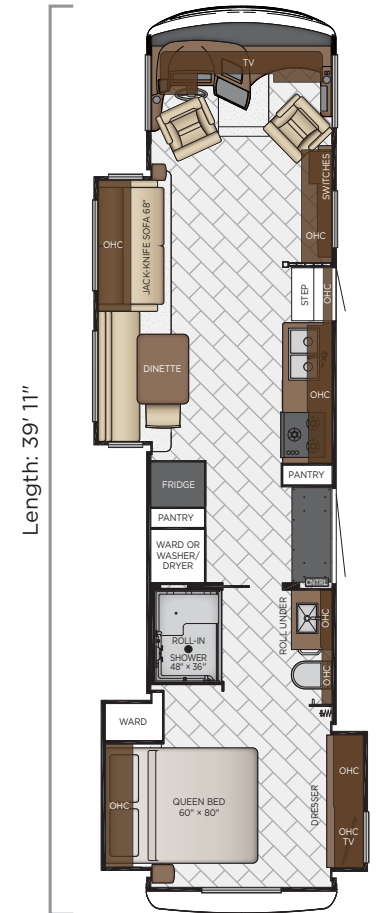
## 3722

Length	37'11"
Width	101.5"
App. Overall Height	12'11"
Interior Width	95.5"
Interior Height	84"
Grey Tank	60 gal.
Sewage Tank	40 gal.
Water Tank	75 gal.
Propane Tank	25 gal.
Furnace	40,000 btu



## 3747

Length	37'11"
Width	101.5"
App. Overall Height	12'11"
Interior Width	95.5"
Interior Height	84"
Grey Tank	60 gal.
Sewage Tank	92 gal.
Water Tank	75 gal.
Propane Tank	25 gal.
Furnace	40,000 btu



Length: 37' 11"

Length: 37' 11"

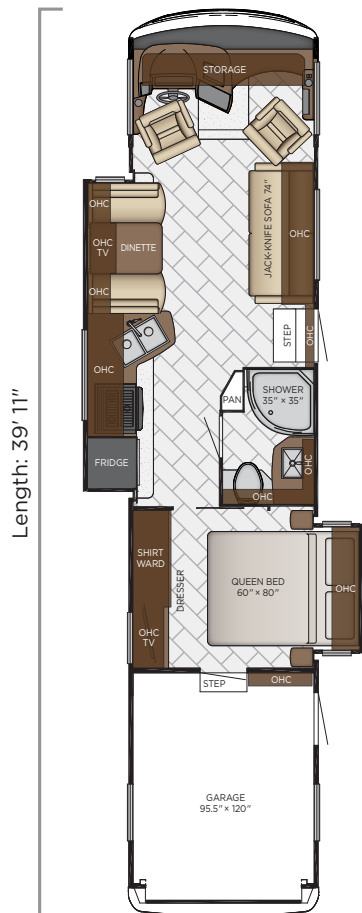
Length: 39' 11"



# Floor Plans

## 3911

Length	39'11"
Width	101.5"
App. Overall Height	12'11"
Interior Width	95.5"
Interior Height	84"
Grey Tank	60 gal.
Sewage Tank	40 gal.
Water Tank	75 gal.
Propane Tank	25 gal.
Furnace	40,000 btu



## 3927

Length	39'11"
Width	101.5"
App. Overall Height	12'11"
Interior Width	95.5"
Interior Height	84"
Grey Tank	60 gal.
Sewage Tank	40 gal.
Water Tank	75 gal.
Propane Tank	25 gal.
Furnace	40,000 btu



## 3929

Length	39'11"
Width	101.5"
App. Overall Height	12'11"
Interior Width	95.5"
Interior Height	80"
Grey Tank	60 gal.
Sewage Tank	92 gal.
Water Tank	75 gal.
Propane Tank	25 gal.
Furnace	40,000 btu



# Quality You Can Feel

Like a fine home, the 2020 Canyon Star is framed 16 inches on center, and is covered by a BriteTEK™ roof with walkable decking and an integrated gutter rail.

FLOOR PLAN	ENGINE HP	AXLE RATIO	FUEL CAP.	WHEEL BASE	FRONT GAWR	REAR GAWR	TAG GAWR	GVWR	GCWR	APP. UVW	APP. NCC
3513	320	6.17	80 gal.	234	9000 lb.	17500 lb.	n/a	26000 lb.	30000 lb.	21970 lb.	4030 lb.
3627	320	6.17	80 gal.	240	9000 lb.	17500 lb.	n/a	26000 lb.	30000 lb.	20860 lb.	5140 lb.
3710	320	6.17	80 gal.	242	9000 lb.	17500 lb.	n/a	26000 lb.	30000 lb.	21352 lb.	4648 lb.
3719	320	6.17	80 gal.	242	9000 lb..	17500 lb.	n/a	26000 lb.	30000 lb.	22044 lb.	3956 lb.
3722	320	6.17	80 gal.	242	9000 lb.	17500 lb.	n/a	26000 lb.	30000 lb.	22044 lb.	3956 lb.
3747	320	6.17	80 gal.	242	9000 lb.	17500 lb.	n/a	26000 lb.	30000 lb.	22500 lb.	3500 lb.
3911	320	6.17	80 gal.	260	9000 lb.	17500 lb.	n/a	26000 lb.	30000 lb.	22241 lb.	3759 lb.
3927	320	6.17	80 gal.	266	9000 lb.	17500 lb.	n/a	26000 lb.	30000 lb.	21623 lb.	4377 lb.
3929	320	6.17	80 gal.	266	9000 lb.	17500 lb.	n/a	26000 lb.	30000 lb.	22848 lb.	3152 lb.

**The content in our literature depicts and describes products that are subject to change. For the most recent images and information, please visit [NewmarCorp.com](http://NewmarCorp.com).**

Lengths, heights, widths and dry weights are approximate. Weight will vary based on optional equipment added to the above base weight.

**GAWR:** Gross Axle Weight Rating is the maximum permissible weight for an axle.

**GVWR:** Gross Vehicle Weight Rating is the maximum permissible weight for a fully loaded motor coach.

**GCWR:** Gross Combination Weight Rating is the value specified by the manufacturer of the vehicle as the maximum allowable loaded weight of this motor coach and any towed trailer or towed vehicle.

**UVW:** Unloaded Vehicle Weight is the weight of this motor coach as built at the factory with full fuel, engine oil and coolants. Does not include cargo, fresh water, propane gas or dealer-installed accessories.

**NCC:** Net Carrying Capacity is the maximum weight of all occupants, including the driver, personal belongings, food, fresh water, waste water, propane gas, tools, tongue weight of towed vehicle, dealer-installed accessories, etc., that can be carried by the motor coach.

**Specifications supplied by the chassis manufacturer.**

**Canyon Star R-Values:**

Roof R-Value = 16

Sidewall R-Value = 11

Floor R-Value = 11

# Features and Options



*Canyon Star Dash*

## EXTERIOR



### EXTERIOR FEATURES

Full-Paint Masterpiece Finish™ with Clearcoat Finish

DuraShield Protection on Front Cap

Convex Exterior Mirrors with Defrost and Remote Control

Entrance Door with Automatic Step

Entrance Door with Automatic Triple Step in Garage\* (3927 Floor Plan)

Fueling Station in Garage\* (3927 Floor Plan)

Rear Hitch for Towing Car

Garage Rear Ramp Access Designed for ATV & Normal Clearance Motorcycle

Assist Handle at Entrance Door

Wheelchair lift on 3911 Floor Plan

Stainless Steel Exterior Trim Pieces on Front Cap and Grille Area

Chrome Exterior Baggage Door Handles

Hydraulic Leveling Jacks

Undercoating

Mud Flaps

Rear Protective Tow Guard with Stainless Newmar Letters

### OPTIONS

Rear Ladder

Flagpole Bracket

### CONSTRUCTION FEATURES

One-Piece Molded Fiberglass Roof

5/8" Foam Insulation Laminated in Sidewalls and Ceiling

Gelcoated Fiberglass Exterior Sidewalls, Front and Rear Caps

Aluminum-Frame Sidewalls & Roof Construction, 16" on Center

Polar Pak R-19 Batten Insulation on Roof

Automatic Mechanical Lock Arms on Slideout Rooms-Scissor Style

### OPTIONS

Power Opening Wheelchair Lift Entrance Door on 3911 Floor Plan

Exterior Kitchen on Door Side Rear of Unit\*

Power Entrance Step Well Cover on 3911

Egress Door with Ladder System\*



## WINDOWS, AWNINGS & VENTS

Frameless Double-Pane Tinted Safety Glass Windows

Fantastic® Vent with Rain Sensor in Kitchen, Bathroom and 3927 Garage\*

Skylight Above Shower

A & E 9100 Series Power Side Awning with Aluminum Weather Shield & Strip Lighting

Slideout Covers

One-Piece Tinted Windshield

Rear Window in Bedroom\*

### OPTIONS

Kitchen Window\*

Driver's Door with Power Window

Power Screen for Rear Cargo Door\*

Screen Door Over Wheelchair Lift Area on 3911

## CHASSIS FEATURES

Ford® F-53 26,000 lb. Chassis

Cruise Control

Tilt Steering Wheel

Aluminum Wheels

Antilock Braking System

## AIR CONDITIONING & HEATING

Two 13.5M Penguin Central Air Conditioners

Dash Heater and Air Conditioner

Defrost Fans Built Into Front Overhead

Driver & Passenger Dash Overhead Ventilation System

Propane Gas Furnace with Ducted Heat

### OPTIONS

13.5M Penguin™ Air Conditioner with Heat Strip in Garage\*

Two 15M Penguin Heat Pump Air Conditioners

Auxiliary Heater in Bedroom

## ELECTRICAL FEATURES

5.5 kW Cummins Onan® Generator with Remote Switch and Automatic Changeover

110V/USB Outlet at head of Each Bunk Area\*

50 Amp Electrical Service with Flexible Cord and Automatic Transfer Switch

Two 12 Volt House Batteries

Battery Disconnect Switch for House Battery

12 Volt Auxiliary Recept on Dashboard

10 Watt Solar Panel to Charge Chassis Battery

Drain Lift Pump with 1200 Watt Inverter\*

60 Amp Converter

Daytime Running Lights

Emergency Engine Start Switch

Accent Lights in Slideout Fascia Trim

LED Ceiling Lights Throughout

Interior Courtesy Lights

Multiplex Lighting Control System

Lighted Wardrobe

Manually Operated Hold-To-Run Slideout Switch

Energy Management System

USB Charger at Passenger Seat Area and at Dash for Driver Use

Cable TV Connection

Fog Lights

Lights in Exterior Storage Compartments, Controlled by an Interior Master Switch

LED Awning Strip Lighting

### OPTIONS

1200 Watt Inverter Run to TVs\*

1200 Watt Pure Sine Inverter for Bedbase, Nightstand and Overhead Cabinet Recepts

7.0 kW Onan Generator

Power Rewind Reel with 33' Cord\*

Solar Prep with 6 Gauge Wire Run from Roof to 1st Storage Compartment

Transfer Switch with Surge Protector

## PLUMBING & BATH FEATURES

Demand Water System

Sewage Holding Tank Rinse

Water Heater Bypass System

Dometic® 321 China Bowl Stool\*

Fiberglass Shower Surround with Shower Door\*

Exterior Shower

Water Filter for Entire Unit

Systems Monitor Panel



## INTERIOR FEATURES

Padded Vinyl Ceiling

Carpeting On Slideout Floors

Inlaid Six Panel Design Interior Passage Doors

AutoMotion Power Shade at Windshield & Manual Shades at Driver/Passenger Side Windows

AutoMotion Manual Double Roller Window Shades\*

Hardwood Slideout Fascia

Dash Panel Color Coordinated ABS

Decorative Wall Art\*

Quilted Bedspread and Accent Pillow

Luxury Vinyl Tile Floor Throughout

Interior Assist Handle at Main Entrance Door

Shoe Storage Located in Entrance Door Step Compartment

Diamond Tread Rubber Flooring in Garage on 3927

Tie-down Track in Garage on 3927

Integrated Window Blind System on Entry Door

Wastebasket in Kitchen Base Under Sink

### OPTIONS

Two Wheel Chocks in Garage Area\*

AutoMotion Power Window Shades with Remote Control on 3911

Carpet in Bedroom

Vinyl Plank Floor in Place of Vinyl Tile

## CABINETS & FURNITURE

Calypro Glazed Maple Cabinets with Mitered Designer Doors in Matte Finish

Concealed Hinges on Cabinet Doors

Villa Comfort Fit Convertible Booth Dinette\*

Drawers Underneath Booth Dinette Seats

Soft Close Cabinet Drawers

Polished Solid Surface Countertop in Kitchen with Under-Mounted Stainless Steel and Sink Covers

Polished Solid Surface Countertops in Bathroom and Bedroom

Drawers with Full Extension Guides

Pull-Out Pantry Shelves\*

Flexsteel® Ultralux Leather Sofa and Driver/Passenger Seats

Dinette with Power Adjusted Table, Bench Seat & Folding Chair on 3911 Floor Plan

Six-Way Power Driver/Passenger Seats

Manual Foot Rest On Passenger Seat

Passenger Seat Work Station



Lifts on Bed Top to Access Storage Area*
Plush Pillow Top Mattress
Extended Rotation Concealed Hinge for Washer/Dryer Cabinet Door
Lower Bed Base with Power Incline Head of Bed & Sleep Number Deluxe Mattress on 3911
Mesh Cell Phone Holder at Each Bunk Bed*
Molded Silverware Divider Tray

**OPTIONS**

Arctic Maple Glazed Cabinets with Mitered Designer Doors and Matte Finish
Astoria Glazed Maple Cabinets with Mitered Designer Doors and Matte Finish
Bermuda Glazed Maple Hardwood Face Frame Cabinets with Mitered Designer Doors-Matte Finish
Harbour Glazed Maple Cabinets with Mitered Designer Doors and Matte Finish
Wicker Glazed Maple Hardwood Face Frame Cabinets with Mitered Designer Doors and Matte Finish
Newport Glazed Maple Hardwood Face Frame Cabinets with Mitered Designer Doors and Matte Finish
Glacier Glazed Maple Hardwood Face Frame Cabinets with Mitered Designer Doors and Matte Finish
Combination Desk/Dinette with Freestanding Hidden-Leaf Table with Four Chairs*
Combination Desk with Buffet Table (Two Fixed/Two Folding Chairs)*
Combination Desk/Dinette with Roll Away Table (Two Fixed/Two Folding Chairs)*
Dinette with Roll Away Table (Two Fixed/Two Folding Chairs)*
Freestanding Hidden Leaf Dinette Table*
Hide-A-Bed Sofa with Innerspring Mattress*
Drop-Down Bunk Bed Over Driver/Passenger Seats with Electric Release Latches & 32" TV in Front Overhead and Bunk Ladder*
Drop-Down Bunk Bed Over Driver/Passenger Seats with Electric Release Latches and Bunk Ladder
Sleep Number® R5 Square Corner Air Mattress
Flexsteel® Euro Booth Dinette*
Power Height Adjustable Bedbase on 3911
Full Height Bed Base on 3911
Full Height Power Incline Retracting Bed Base on 3911
Power Incline Retracting Bed Base with Sleep Number® Air Mattress
Electric Lift Bunk Beds with Seating, Pedestal Table and Removable Floor Rug in Garage*
Lowered Bed Base with Freestyle Glideaway Adj. Bed Mechanism with Special Air Mattress and Window on 3911
Two Recliners Off Door Side, 68" Fold-N-Tumble*
87" Bunk Sofa*
Buffet Dinette*
Buffet Dinette with Freestanding Table*

Extenda Flex Dinette*
Side Folding Hide-A-Bed Sofa with Innerspring Mattress*
Standard Height Bed Base with Freestyle Glideaway Adj. Bed Mechanism with Special Air Mattress and Window on 3911
Powered Theater Seating*
Two Ottomans*

**APPLIANCES & ACCESSORIES**

Three-Burner Recessed Range with Oven*
Convection Microwave Below Cooktop on 3911
30" Convection Stainless Steel Microwave with 3-Burner Gas Cooktop with Piezo Ignition*
Norcold® 10 Cf. Refrigerator
Raised Panel Refrigerator Door Insert Panel
Flush Gas Cooktop Cover of Matching Countertop Material
10 gal. Gas/Electric Water Heater Direct-Spark Ignition*
Truma AquaGo Instant Continuous Flow Water Heater on 3927

**OPTIONS**

30" Convection Stainless Steel Microwave in Kitchen Overhead with Drawer Below Cooktop on 3911
Norcold® 12 Cf. Four-Door Refrigerator with Icemaker*
Icemaker Added to Standard Norcold Refrigerator with Heated Water Line
Icemaker Added to Standard Norcold® Refrigerator
Whirlpool® 19.7 Cf. Refrigerator, 2000 Watt Pure Sine Inverter & Six-6 Volt Batteries*
Whirlpool 11 Cf. Refrigerator with Dedicated 1200 Watt Pure Sine Inverter & Two Extra Batteries and Icemaker
Whirlpool 11 Cf. Refrigerator with Dedicated 1200 Watt Pure Sine Inverter & Two Extra Batteries*
Dishwasher Under Cooktop
Splendide® Two-Piece Stacked Washer & Dryer
Splendide Two-Piece Stacked Washer & Dryer in Garage on 3927
Prep for Two-Piece Washer/Dryer
Prep for Two-Piece Washer/Dryer in Garage on 3927
Central Vacuum with Tool Kit
Fireplace in Living Area*
110 Volt Heat Pads for Holding Tanks



**AUDIO, VIDEO & ACCESSORIES**

Samsung LED TV and DVD Player in Living & Bedroom Area (TV Sizes Vary Per Floor Plan)
Bose® Solo 5 Soundbar Sound System
AM/FM/CD Dash Radio with Harman/JBL 180 Watt Sound System
Exterior AM/FM/DVD Radio with Two Speakers Inside 3927 Garage Area & Two Outside Speakers*
High Definition Component Wiring
Rearview Color Monitor System with Audio
Side View Cameras Displayed onto Rearview Monitor Screen
Winegard® Digital Crank-Up TV Antenna
Two Bedroom Radio Speakers with On/Off Switch
Satellite Prep on Roof
TV Jack and 110 Volt Recept in Door Side Exterior Storage Compartment
Two Blu-ray Disc Players
Bluetooth Microphone for Sony® Dash Radio
10 Bc Fire Extinguisher, Smoke Detector, Propane and Carbon Monoxide Detector
10 Bc Fire Extinguisher in Garage 3927 Floor Plan

**OPTIONS**

Sirius® Satellite Radio with Antenna (Does not include monthly subscription)
43" Samsung LED TV in Front Overhead*
50" Samsung Televator TV with Fireplace in Place of Front Overhead TV on 3911
32" Samsung LED TV in Garage Area
Two 19" Skyworth TV/DVD Monitors one at each Bunk*
WiFiRanger Sky3 Pack Router
WiFiRanger SkyPro LTE Cellular Router
Winegard® Automatic Dome Satellite Dish
Winegard Automatic Open Face Satellite Dish
Winegard Automatic Open Face SWM Satellite Dish
Winegard in Motion Dome Satellite Dish
Winegard Rayzar Automatic Digital TV Antenna
Winegard Cellular In Motion WiFi
Exterior Entertainment Center in Sidewall with Samsung 32" LED TV and Radio*
Exterior Entertainment Center in Storage Compartment with Samsung 32" LED TV and Radio*
Xite Dash Radio, 6" Monitor with Rand McNally Navigation

\*Check with dealership on floor plan availability.

The content in our literature depicts and describes products that are subject to change. For the most recent images and information, please visit [NewmarCorp.com](http://NewmarCorp.com).

# The Newmar Customer Experience

*The Newmar difference goes beyond our industry-leading motor coaches to deliver you with an unrivaled ownership experience.*



## QUALITY FROM THE START

Every Newmar is crafted one at a time by folks who have spent an average of eight years building them. And each coach we assemble must undergo more than 1,000 tests and checks before ever leaving our factory.



## CAREFULLY SELECTED DEALERS

We view our dealership network in terms of quality, not quantity. Each of our dealers acts as a partner in our shared mission to exceed your highest of expectations, for an ownership experience that's second to none from day one.



## EVERYTHING IN ONE PLACE

As a Newmar owner, you'll find resources specific to your coach through Newgle, an easy-to-use knowledge base that houses everything from user guides to technical support documents.



## FRIENDS FOR LIFE

Meet fellow owners through the Newmar Kountry Klub, a top social club for RV travelers that hosts rallies and other special events throughout the U.S. and Canada.



## SEAMLESS SERVICE

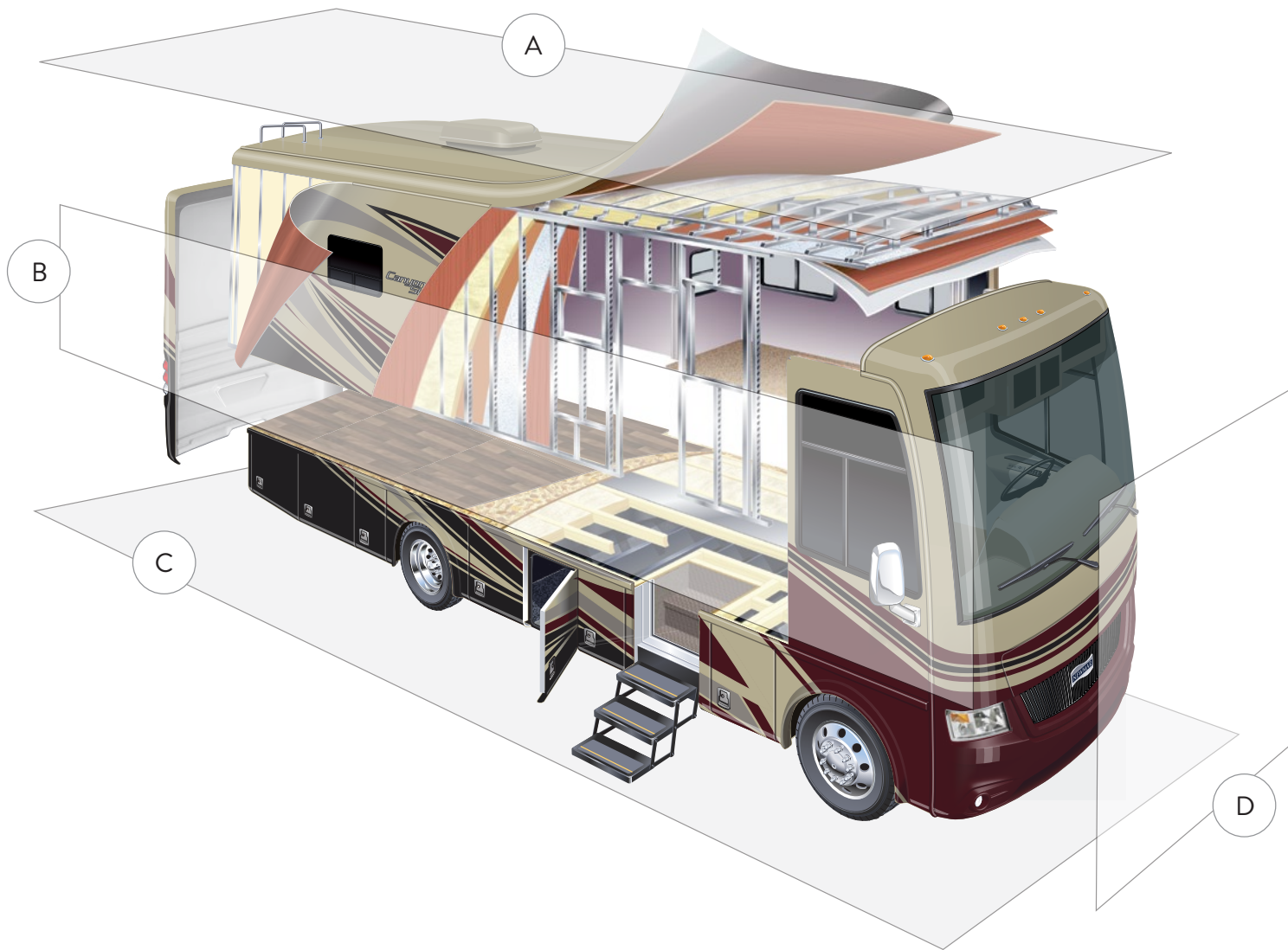
When you join the Newmar family, we pair you with a dedicated service specialist with expert knowledge of your exact coach. Available 24/7, our service specialists guarantee dealer warranty authorizations within four business hours and ship all in-stock parts the same day, free of charge.



## ROCK-SOLID PROTECTION

All models include a one-year/unlimited mileage limited warranty and a five-year, non-transferable structural warranty that covers your coach's superstructure in the event it fails to perform.

**Ask your Newmar dealer for more details.**



## A. ROOF

---

One-Piece Fiberglass Roof  
 Batten Insulation  
 A/C Ducting  
 16" on Center Aluminum  
 Rafter Framing  
 Kraft Paper Vapor Barrier  
 5/8" Bead Foam  
 3/16" Panel  
 Padded Vinyl Overlay

## B. SIDEWALL

---

Interior Wall Panel  
 5/8" Bead Foam  
 Kraft Paper Vapor Barrier  
 Batten Insulation  
 Composite One-Piece  
 Gelcoat Exterior Sidewall  
 Aluminum Framing

## C. FLOOR

---

Vinyl Tile  
 5/8" Floor Decking  
 Fiberglass Batten Insulation  
 16" on Center Wood Framing  
 Polyethylene Moisture Barrier

## D. EXTERIOR

---

13.5M Penguin Central  
 Air Conditioner  
 One-Piece Bonded Windshield  
 Coated Aluminum Wheels  
 Frameless, Double-Pane,  
 Tinted Safety Glass Windows  
 Side-Hinged Baggage Doors

# Our Partners

*Newmar Quality Begins With The Company We Keep*

*You deserve class-leading performance from names you can trust. That's why we only work with suppliers dedicated to providing our customers with unrivaled quality, comfort, and support.*



We create chemistry

## BASF

The Coatings division of BASF is a global expert in the development and production of innovative and sustainable OEM and refinish coatings that deliver solutions beyond your imagination.



## INDUSTRIAL FINISHES

Industrial Finishes has supported RV manufacturers for over four decades. The Industrial Finishes paint process delivers uncompromising quality, providing your coach with a true "Masterpiece" finish.



Driven By You

## FREIGHTLINER CUSTOM CHASSIS

Freightliner Custom Chassis Corp. (FCCC) is renowned for delivering the industry's best ownership experience through exceptional 24/7 factory-direct support, exceptional ride and handling and developing high-performance innovations such as DRIVETECH. The only RV driving system that prioritizes safety and automotive luxury by putting every command at your fingertips.



## RIVERPARK

At RiverPark, we proudly represent the leading brands in consumer electronics—brands you know and trust to provide exceptional quality, innovative technology, and cutting-edge features. Newmar features Samsung's incredible 4K TVs, Xite Infotainment systems featuring Rand McNally, Bose soundbars, and JBL and Infinity premium audio. Step into a 2020 Newmar motorhome and experience dazzling audio and video performance throughout the coach.



FLEXSTEEL®  
RECREATION

## FLEXSTEEL RECREATION

Flexsteel Recreation offers innovative furniture designed for a life that rarely sits still. Comfortable and space-saving, Flexsteel furniture ensures your RV is always ready for dining, sleeping, or hosting guests.



## SPARTAN MOTORS

Spartan Motors is an American company with over 30 years of experience designing and manufacturing the premier motorhome chassis, which provides superior performance, exceptional safety ratings, and industry-leading technology.





# Our People Make the Difference

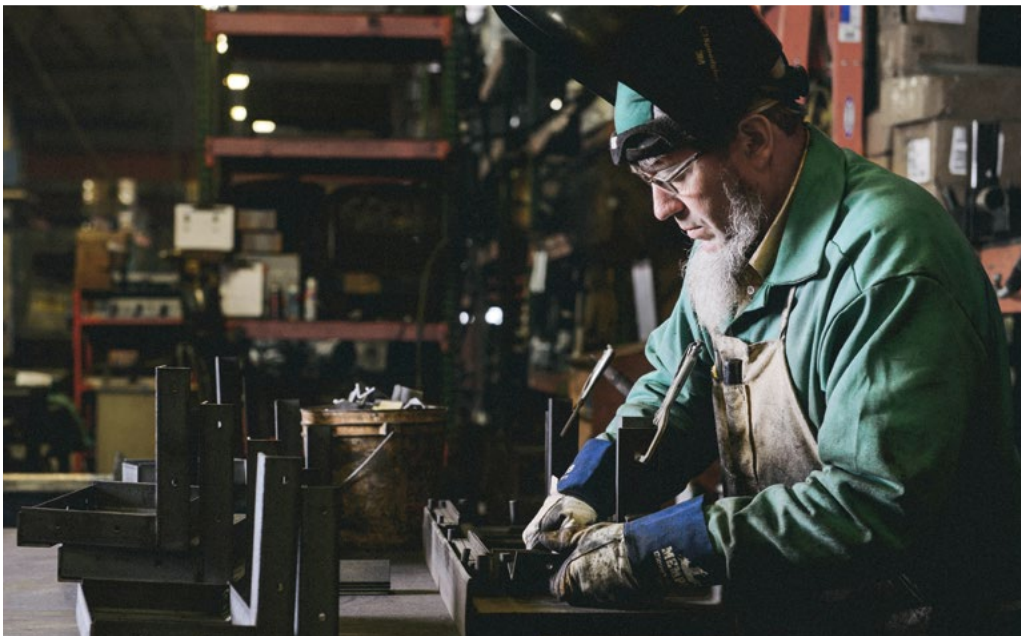
Newmar was founded in 1968 for one simple reason:  
to build a better RV.

Since then, we've focused our efforts and energy on creating residential-quality "homes on wheels," complete with handmade cabinetry and designer décors.

And every Newmar is handcrafted one at a time by men and women who have spent an average of eight years assembling them, resulting in superior-quality coaches that fully surpass their mass-produced competition.

Here, we don't just take the responsibility of designing, engineering, and constructing your motorhome seriously, we take it personally. Because in the end, our goal is not to win your trust, but earn it. Not once, but every single time you hit the road.

Join us, and discover the Newmar difference for yourself.



When You Know the Difference.



Newmar Corporation | 355 N Delaware St | PO Box 30 | Nappanee, IN 46550-0030 | 574-773-7791 | Fax 574-773-2895

[NewmarCorp.com](http://NewmarCorp.com)