



# KOUNTRY STAR

2023 DIESEL MOTOR COACH





## FROM TOWN TO COUNTRY—AND ALL POINTS IN BETWEEN.

The Kountry Star gained an instant reputation on its release, and we've done nothing but improve upon it since. As our most affordable diesel pusher, it features an astounding array of standard features and options.

## Freightliner® XCR Chassis

Cummins B Diesel Engine // 360 HP // 800 lb./ft. torque



34'–40' // 8 floor plans





# COCKPIT

**Industry-First Comfort Drive™ Adaptive Steering**

**Mobileye® Lane Tracking and Lane Departure System**

**Glass Dash Instrument Panel**

**Harman/JBL 180 Watt Sound System**

**Xite Dash Radio** (Optional)

6.5" Monitor

Apple CarPlay

Nav-N-Go Navigation System

**Side-View Camera System**







# CABIN

**Three Décor Options:  
Ansel\*, Baja\*, and Roka**

**87" Jackknife Sofa\*\***

**WiFi Ranger Everest LTE System with Aspen Router**  
(Optional)

**Mid-Ship Dedicated Workspace<sup>1</sup>**

**Beverage Center with Wine Cooler and Stemware Rack<sup>1</sup>**  
(Optional)

**30" x 72" Mid-Ship Bunks<sup>2</sup>**

**Vinyl Plank Floor** (Optional)

\*New for 2023

\*\*Select Floor Plans

<sup>1</sup>Floor Plan 4068

<sup>2</sup>Floor Plan 4070



*Floor plan 4068 with Baja décor  
and Glacier cabinets*







# CABIN

**Two 15M Penguin™ Heat Pump Central Air Conditioners**

**Fireplace in Living Area\*\*** (Optional)

**Samsung® 4K LED TV on Televator\*\***

Bose® Soundbar System

**Samsung® 32" LED TV in Front Overhead** (Optional)

**Five Optional Winegard Satellite/Digital TV Antenna Configurations**

\*\*Select Floor Plans







# GALLEY

## Glazed Maple Flat Designer Cabinets

Available in Seven Matte Finish Color Options

Soft-Close Cabinet Doors

Undermounted LED Lights

## 30" Convection Stainless Microwave

## Recessed Three Burner Cooktop

## Norcold® 10 Cu. Ft. Refrigerator

Eight Optional Refrigerator Configurations

## Polished Solid Surface Countertop

## Kitchen Window







# DINETTE

**Williamsburg Convertible Booth Dinette**

**Euro Booth Dinette** (Optional)\*

Two Configurations Available

\*Additional dinette configurations available







# MASTER BEDROOM

**King Bed with Pillow Top Mattress\***  
Sleep Number® Mattress and Base (Optional)

**Dresser and Two Shirt Wardrobes\***

**Samsung® LED TV**

\*Select Floor Plans







# BATHROOM

**35" Radius Shower\***

**40" x 30" Residential Shower\*\***

**Polished Solid Surface Countertop**

**Truma Comfort Plus Continuous Water Heater** (Optional)

**Splendide® Two-Piece Stacked Washer and Dryer** (Optional)

**Linen Storage**

\*Floor Plan 4068 and 4070

\*\*Select Floor Plans







# EXTERIOR

**Industry-Exclusive Full-Paint  
Masterpiece Finish™ with Clearcoat Finish**

**Silverstar Ultra Headlight Bulbs**

**Four 6-Volt House Batteries  
on Pullout Tray**

**Carefree Travel'r Power Side  
and Entrance Door Awning**

Alumaguard  
LED Strip Lighting







# EXTERIOR

**Three Graphic Design and Color Options**

**Industry-Exclusive STAR Foundation**

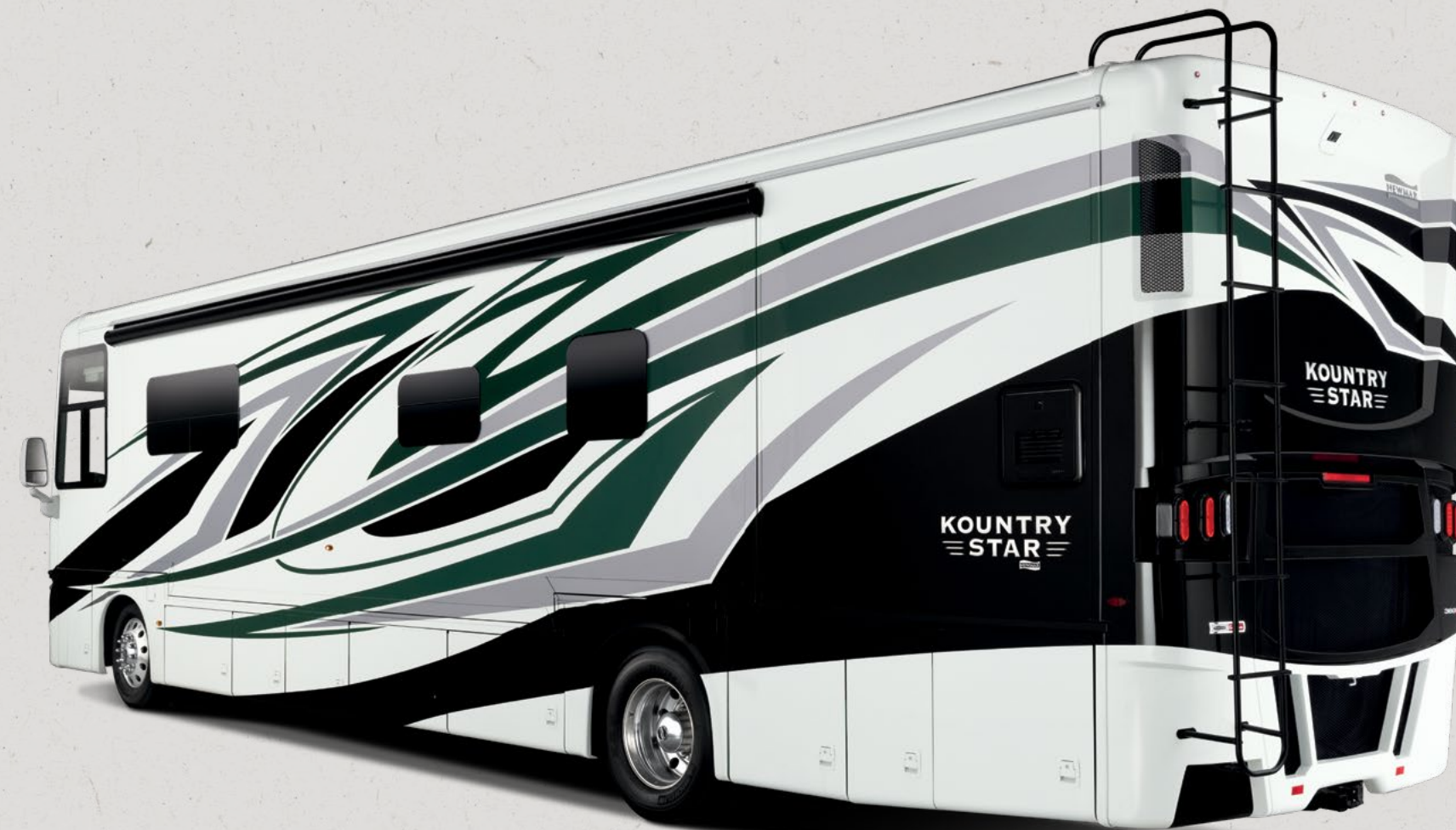
**Exterior Entertainment System** (Optional)

Samsung® 43" LED TV

Bose® Soundbar

**8.0 kW Cummins Onan® Diesel Quiet Series Generator**

Automatic Generator Start on Low Battery or Temperature Setting





A dark, moody photograph of an RV interior, showing a kitchen area on the left with cabinets and a window, and a living area on the right with a sofa and armchairs. The ceiling has decorative lighting fixtures. The overall tone is dark and sophisticated.

# INTERIOR/EXTERIOR DESIGN OPTIONS



# Ansel

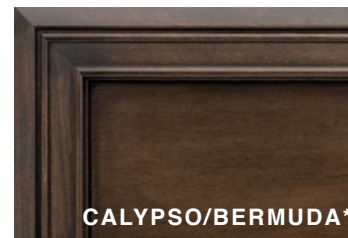


Awning Color: Charcoal Tweed

## ANSEL INTERIOR a. Furniture/Fabric b. Flooring c. Counter Top



## CABINET FINISHES



\*Exterior colors and interior décor options can be matched to customer preference.

\*Available in Matte Finish





# Baia

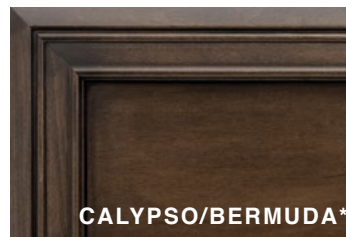


Awning Color: Charcoal Tweed

## BAJA INTERIOR a. Furniture/Fabric b. Flooring c. Counter Top



## CABINET FINISHES



*\*Exterior colors and interior décor options can be matched to customer preference.*

*\*Available in Matte Finish*



# Roka



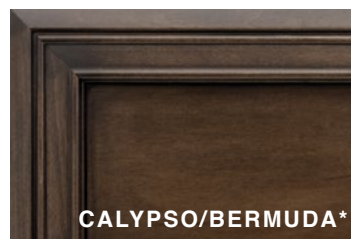
Awning Color: Charcoal Tweed

## ROKA INTERIOR a. Furniture/Fabric b. Flooring c. Counter Top



*\*Exterior colors and interior décor options can be matched to customer preference.*

## CABINET FINISHES



*\*Available in Matte Finish*



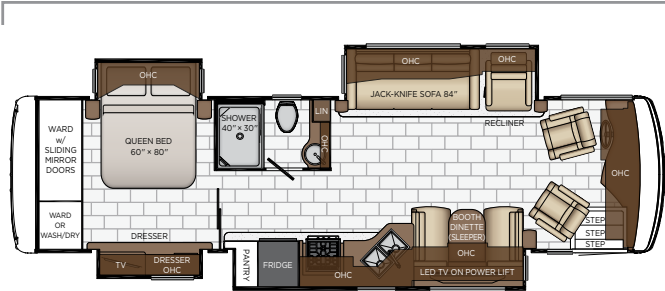




# FLOOR PLANS & SPECIFICATIONS

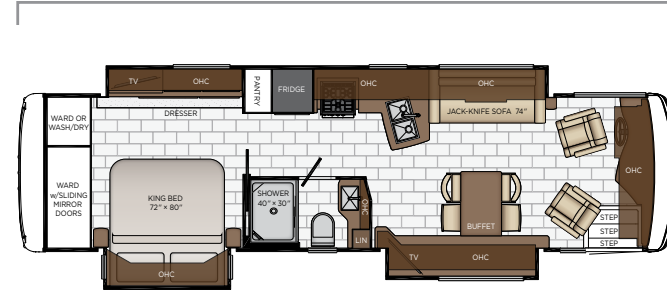


Length: 34' 10"



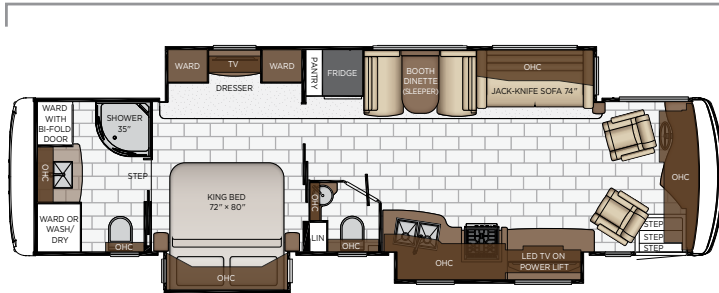
<b>3412</b>	Length	34' 10"	Grey Tank	65 gal.
	Width	101.5"	Sewage Tank	45 gal.
	App. Overall Height	12' 10"	Water Tank	105 gal.
	Interior Width	95.5"	Propane Tank	32 gal.
	Interior Height	83"	Furnace	35,000 btu

Length: 34' 10"



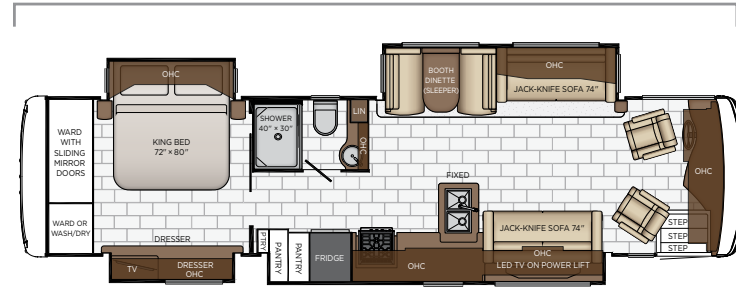
<b>3426</b>	Length	34' 10"	Grey Tank	65 gal.
	Width	101.5"	Sewage Tank	45 gal.
	App. Overall Height	12' 10"	Water Tank	105 gal.
	Interior Width	95.5"	Propane Tank	32 gal.
	Interior Height	83"	Furnace	35,000 btu

Length: 37' 10"



<b>3709</b>	Length	37' 10"	Grey Tank	65 gal.
	Width	101.5"	Sewage Tank	45 gal.
	App. Overall Height	12' 10"	Water Tank	105 gal.
	Interior Width	95.5"	Propane Tank	32 gal.
	Interior Height	83"	Furnace	54,000 btu

Length: 37' 10"

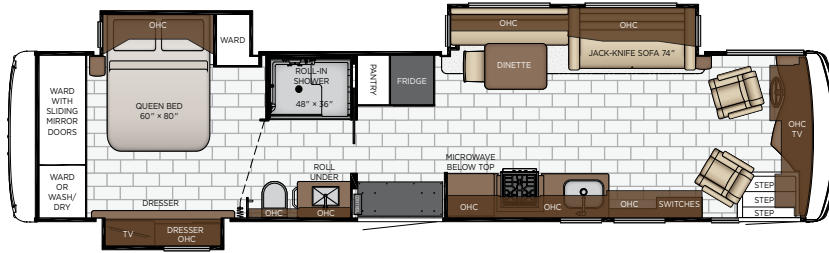


<b>3717</b>	Length	37' 10"	Grey Tank	65 gal.
	Width	101.5"	Sewage Tank	45 gal.
	App. Overall Height	12' 10"	Water Tank	105 gal.
	Interior Width	95.5"	Propane Tank	32 gal.
	Interior Height	83"	Furnace	54,000 btu





Length: 40' 10"



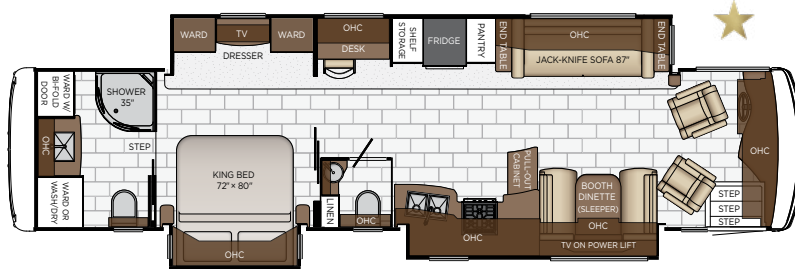
4011	Length	40' 10"	Grey Tank	65 gal.
	Width	101.5"	Sewage Tank	45 gal.
	App. Overall Height	12' 10"	Water Tank	105 gal.
	Interior Width	95.5"	Propane Tank	32 gal.
	Interior Height	83"	Furnace	54,000 btu

Length: 40' 10"



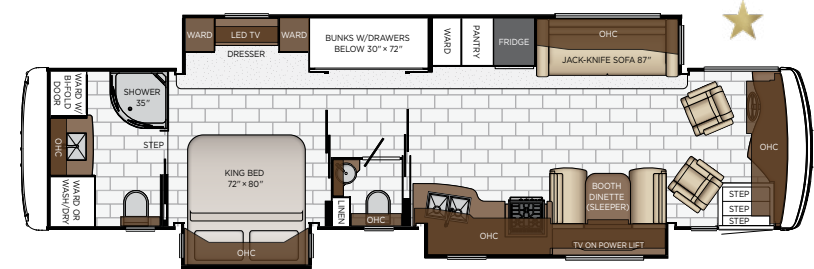
4037	Length	40' 10"	Grey Tank	65 gal.
	Width	101.5"	Sewage Tank	45 gal.
	App. Overall Height	12' 10"	Water Tank	105 gal.
	Interior Width	95.5"	Propane Tank	32 gal.
	Interior Height	83"	Furnace	54,000 btu

Length: 40' 10"



4068	Length	40' 10"	Grey Tank	65 gal.
	Width	101.5"	Sewage Tank	45 gal.
	App. Overall Height	12' 10"	Water Tank	105 gal.
	Interior Width	95.5"	Propane Tank	32 gal.
	Interior Height	83"	Furnace	54,000 btu

Length: 40' 10"



4070	Length	40' 10"	Grey Tank	65 gal.
	Width	101.5"	Sewage Tank	45 gal.
	App. Overall Height	12' 10"	Water Tank	105 gal.
	Interior Width	95.5"	Propane Tank	32 gal.
	Interior Height	83"	Furnace	54,000 btu



QUALITY YOU CAN FEEL

Like a fine home, the 2023 Kountry Star is framed 16 inches on center, and is covered by a fiberglass roof with an integrated gutter rail.



FREIGHTLINER®											
FLOOR PLAN	ENGINE HP	AXLE RATIO	FUEL CAP.	WHEEL BASE	FRONT GAWR	REAR GAWR	TAG GAWR	GVWR	GCWR	APP. UVW	APP. NCC
3412	360	4.78	100 gal.	206	12400 lb.	21000 lb.	n/a	33400 lb.	43400 lb.	27000 lb.	6400 lb.
3426	360	4.78	100 gal.	206	12400 lb.	21000 lb.	n/a	33400 lb.	43400 lb.	26400 lb.	7000 lb.
3709	360	4.78	100 gal.	242	13500 lb.	24000 lb.	n/a	37500 lb.	47500 lb.	28500 lb.	9000 lb.
3717	360	4.78	100 gal.	242	13500 lb.	24000 lb.	n/a	37500 lb.	47500 lb.	28400 lb.	9100 lb.
4011	360	4.78	100 gal.	276	14200 lb.	24000 lb.	n/a	38200 lb.	48200 lb.	28700 lb.	9500 lb.
4037	360	4.78	100 gal.	276	14200 lb.	24000 lb.	n/a	38200 lb.	48200 lb.	30000 lb.	8200 lb.
4068	360	4.78	100 gal.	276	14200 lb.	24000 lb.	n/a	38200 lb.	48200 lb.	30000 lb.	8200 lb.
4070	360	4.78	100 gal.	276	14200 lb.	24000 lb.	n/a	38200 lb.	48200 lb.	30100 lb.	8100 lb.

The content in our literature depicts and describes products that are subject to change. For the most recent images and information, please visit [NewmarCorp.com](http://NewmarCorp.com).

Lengths, heights, widths, and dry weights are approximate. Weight will vary based on optional equipment added to the above base weight.

**GAWR:** Gross Axle Weight Rating is the maximum permissible weight for an axle.

**GVWR:** Gross Vehicle Weight Rating is the maximum permissible weight for a fully loaded motor coach.

**GCWR:** Gross Combination Weight Rating is the value specified by the manufacturer of the vehicle as the maximum allowable loaded weight of this motor coach and any towed trailer or towed vehicle.

**UVW:** Unloaded Vehicle Weight is the weight of this motor coach as built at the factory with full fuel, engine oil, and coolants. Does not include cargo, fresh water, propane gas, or dealer-installed accessories.

**NCC:** Net Carrying Capacity is the maximum weight of all occupants, including the driver, personal belongings, food, fresh water, waste water, propane gas, tools, tongue weight of towed vehicle, dealer-installed accessories, etc., that can be carried by the motor coach.

**Specifications supplied by the chassis manufacturer.**

**Kountry Star R-Values:**

Roof R-Value = 19

Sidewall R-Value = 11

Floor R-Value = 16

Basement R-Value = 4





# FEATURES & OPTIONS







## EXTERIOR FEATURES

Full-Paint Masterpiece Finish™ with Clearcoat Finish
Diamond Shield Protection on Front Cap
Convex Exterior Mirrors with Remote Control and Defrost
Entrance Door with Automatic Step
Assist Handle at Entrance Door
Smart Level Hydraulic Leveling Jacks with Bluetooth Compatible Touch Pad
Mud Flaps
Rear Ladder
Rear Hitch for Towing Car
Undercoating
Wheelchair Lift on 4011

OPTIONS
Flag Pole Bracket
Storage Tray 30" X 90" Power Location-Bay 3 on 4011

## CONSTRUCTION FEATURES

Gelcoated Fiberglass Exterior Sidewalls, Front and Rear Caps
Aluminum-Frame Sidewalls and Roof Construction, 16" on Center
5/8" Foam Insulation Laminated in Sidewalls and Ceiling
Polar Pak R19 Batten Insulation in Roof
One Piece Molded Fiberglass Roof
Automatic Mechanical Lock Arms on Slideout Rooms-Scissor Style
Power Opening Entrance Door for Wheel Chair Lift on 4011

OPTIONS
Egress Door with Ladder System*

## WINDOWS, AWNINGS, & VENTS

One-Piece Tinted Windshield
Frameless Double-Pane Tinted Safety-Glass Windows
Fan-Tastic® Vent with Rain Sensor in Kitchen and Bathroom
Skylight Above Shower
Carefree Travel'r Power Side and Entrance Door Awning with Alumaguard and LED Strip Lighting
Slideout Awning Covers
Kitchen Window
Entrance Door to Lock/Unlock Automatically with Park Brake

## OPTIONS

Bunk Windows
Screen Door Over Wheel Chair Lift on 4011

## CHASSIS FEATURES

Freightliner® XCR Chassis with 360Hp Cummins ISB Engine 34'-40' Floor Plans
Aluminum Wheels
Comfort Drive™ Steering System with Power Column and Adjustable Control
V-Ride Drive Axle Suspension
Cruise Control
Manual Tilt and Telescope Steering Wheel with VIP Smart Wheel
Recessed Fuel Fills with Crossover to Fill from Either Side
Anti-Lock Braking System
Chassis Battery Disconnect
Glass Dash Instrument Panel
Dash Panel Optiview
Headlights Automatic High Beam
Mobileye® Lane Tracking and Lane Departure Warning System

## AIR CONDITIONING & HEATING

Two 15M Penguin™ Heat Pump Air Conditioners
Propane Furnace with Ducted Heat
Dash Heater and Air Conditioner
Wall Mounted Sensors for Heating and Air Conditioning
Built in Overhead Defroster Blower Fan

## ELECTRICAL FEATURES

8.0 kW Cummins Onan® Diesel Quiet Series Generator
50 Amp Electrical Service with Flexible Cord and Automatic Transfer Switch
Automatic Generator Start on Low Battery or Temperature Setting
Four 6-Volt House Batteries on Pullout Tray
Battery Disconnect Switch for House Battery
2000 Watt Xantrex Tru Sine Inverter
Emergency Engine Start Switch
Energy Management System
Exterior Security Light on Doorside





---

Mid-Ship Side Turn Signals

---

LED Lights Recessed in Ceiling and Underneath Overhead Cabinets

---

LED Awning Strip Lighting

---

Manually Operated Hold-To-Run Slideout Switch

---

12 Volt Auxiliary Receptacle on Dashboard

---

USB Charger At Dinette and Bedroom Night Stand

---

USB Outlet at Dash for Driver Use

---

110V USB Outlet at Head of Each Bunk Area\*

---

110V Recept in Bed Overhead with Two Pass-Through Ports

---

Engine Block Heater

---

Cable TV Connection

---

Lights in Exterior Storage Compartments

---

Interior Courtesy Lights

---

Spare Fuses in Chassis Fuse Panel and House Fuse Panel

---

Multiplex Monitor System 10.1" in Center of Coach with Interior Lighting and HVAC Controls

---

Power Rewind Reel with 33' Cord\*

---

Dash Radio, Cameras and Monitors to Power-Up from both House Batteries and Ignition

---

**OPTIONS**

---

Transfer Switch with Surge Protector

---

**PLUMBING & BATH FEATURES**

---

Demand Water System

---

Sewage Holding-Tank Rinse

---

Water Heater Bypass System

---

Dometic® 321 China Bowl Stool or Macerator Stool\*

---

Exterior Shower

---

Water Filter for Entire Unit

---

**INTERIOR FEATURES**

---

Dash Panel Color Coordinated ABS

---

Interior Assist Handle at Main Entry Door

---

Power Stepwell Cover

---

Inlayed Six Panel Design Interior Passage Doors

---

Decorative Wall Art

---

Padded Vinyl Ceiling

---

Vinyl Tile Floor in Kitchen, Bathroom and Living Area

---

Carpeting on Slideout Floors

---

MCD Window Shades

---

MCD Power Shades at Windshield and Manual Shades on Driver/Passenger Side Windows

---

Fitted Cam-Quilted Bedspread with Picture Frame Accent and Accent Pillow

---

**OPTIONS**

---

Vinyl Plank Floor in Place of Vinyl Tile

---

MCD Power Window Shades with Remote Control on 4011

---

**CABINETS & FURNITURE**

---

Calypso Glazed Maple Mitered Flat Designer Cabinet Doors with Matte Finish

---

Concealed Hinges on Cabinet Doors

---

Drawers with Full Extension Ball Bearing Guides

---

Fixed Pantry Shelves

---

Cooktop Cover Flush, Matching Countertop Material

---

Soft-Close Cabinet Drawers

---

Polished Solid Surface Countertop in Kitchen with Undermounted Stainless Steel Sink and Sink Covers

---

Polished Solid Surface Countertops in Bathroom and Bedroom

---

Ultralux Sofa and Front Seats

---

Plush Pillow Top Mattress

---

Lifts on Bed Top

---

Front Seats with 6 Way Power

---

Driver Seat with Vibrator for Mobileye® System

---

Manual Foot Rest on Passenger Seat

---

Passenger Seat Work Station

---

Desk with One Chair\*

---

Dinette Booth Williamsburg\*

---

Dinette with Power Adjustable Table, Bench Seat and Folding Chair on Wheel Chair Accessible Floor Plan

---

Villa Comfort Fit Furniture

---

Mesh Cell Phone Holder at each Bunk Bed\*

---

Extended Rotation Concealed Hinge for Washer Dryer Cabinet Door

---

**OPTIONS**

---

Amaretto Glazed Maple Mitered Flat Designer Cabinet Doors with Matte Finish

---

Arctic "B" Glazed Maple Mitered Flat Designer Cabinet Doors with Matte Finish

---

Toffee Glazed Maple Hardwood Face Frame Mitered Flat Designer Cabinet Doors with Matte Finish

---

Glacier Glazed Maple Hardwood Face Frame Mitered Flat Designer Cabinet Doors with Matte Finish

---

Bermuda Glazed Maple Hardwood Face Frame Mitered Flat Designer Cabinet Doors with Matte Finish

---

Combination Desk with Buffet Dinette Table, 2 Fixed and Two Folding Chairs





Euro Booth Dinette with One Table Leaf on 3426
Euro Booth Dinette with Two Table Leaves, Removable Table Leg and Two Folding Chairs
Side 84" Hide-A-Bed Sofa*
Sofa 84" Hide-A-Bed with Memory Foam Mattress
Sofa Hide-A-Bed with Memory Foam Mattress
Sleep Number® R5 Square Air Mattress
Sleep Number® R5 Radius Corner Air Mattress
Powered Theater Seating 74" with Reading Lights and Lighted Cup Holders
Powered Theater Seating 87" with Reading Lights and Lighted Cup Holders
Two Ottomans*
Two Recliners with Lampstand and Reading Lights
Two Recliners with Reading Lights
Full Height Bed Base on 4011

## APPLIANCES & ACCESSORIES

30" Stainless Steel Convection Microwave with 3-Burner Cooktop
Norcold® 10 Cu. Ft. Stainless Steel Refrigerator
10 gal. Gas/Electric Water Heater with Direct-Spark Ignition
Prep for Two-Piece Washer/Dryer
Flush Gas Cooktop Cover of Matching Countertop Material
Air Horns

### OPTIONS

Norcold® 12 Cf. Four-Door Refrigerator with Icemaker
Norcold® 12 Cf. Four-Door Refrigerator with Icemaker and Heated Water Line
Icemaker added to Standard Norcold® Refrigerator
Icemaker Added to Standard Norcold® Refrigerator with Heated Water Line
Whirlpool® 19.7 Cf. Refrigerator, Two Extra 6-Volt Batteries and 22 gal. Propane Tank
Whirlpool® 19.7 Cf. Refrigerator, Two Extra 6-Volt Batteries and 22 gal. Propane Tank and Heated Water Line
Whirlpool® 11 Cf. Refrigerator, Extra 6-Volt Batteries, 22 gal. Propane Tank and Icemaker
Whirlpool® 11 Cf. Refrigerator, Extra 6-Volt Batteries and 22 gal. Propane Tank
30" Stainless Steel Convection Microwave in Kitchen Overhead on 4011
Beverage Center with Wine Cooler and Stemware Rack*
Splendide® Two-Piece Stacked Washer and Dryer
Fireplace in Living Area*
Central Vacuum with Tool Kit
Truma Comfort Plus Continuous Hot Water Heater

## AUDIO, VIDEO & ACCESSORIES

Samsung® LED TV in Living and Bedroom Areas, TV Sizes Vary per Floor Plan*
Samsung® 50" 4K LED Televator TV in Living Area, on Selected Floor Plans*
Dash Radio with Harman/JBL 180 Watt Sound System and Subwoofer
Bluetooth Microphone for Dash Radio
Rearview Color Monitor System with Audio
Side-View Cameras Displayed onto Rear View Monitor Screen
Winegard Digital Crank Up TV Antenna
Satellite Prep on Roof
TV Jack and 110 Volt Recept in Door Side Exterior Storage Compartment
High Definition Component Wiring
Bose® Soundbar Sound System
10 Bc Fire Extinguisher, Smoke Detector, Propane and Carbon Monoxide Detector

### OPTIONS

Samsung® 32" LED TV in Front Overhead
50" TV on Televator with Fireplace on 4011
Two 19" Skyworth TV/DVD Monitors at each Bunk*
Xite Dash Radio, 6.5" Monitor with Apple CarPlay and Nav-N-Go Navigation System
Exterior Entertainment Center in Sidewall with Samsung® 43" LED TV and Soundbar
Exterior Entertainment Center in Storage Compartment with Samsung® 43" LED TV and Soundbar
Sirius® XM Capability with Antenna (Does not include monthly subscription)
WiFi Ranger Denali/Spruce LTE
WiFi System Everest with Aspen Interior Router
Winegard Automatic Dome Satellite Dish-Std/HD, DIRECTV Std. and Bell Canada
Winegard Automatic Open Face Satellite Dish-HD and Bell HD TV
Winegard Automatic Open Face SWM Satellite Dish-DIRECTV Std/HD
Winegard In-Motion Dome Satellite Dish-Std/HD, DIRECTV Std. and Bell Canada
Winegard Rayzar Automatic Digital TV Antenna





### A. ROOF

Fiberglass Roof  
 Batten Insulation  
 A/C Ducting  
 16" on Center Aluminum Rafter Framing  
 Kraft Paper Vapor Barrier  
 5/8" Bead Foam  
 3/16" Panel  
 Padded Vinyl Overlay

### B. SIDEWALL

Interior Wall Panel  
 5/8" Bead Foam  
 Kraft Paper Vapor Barrier  
 Batten Insulation  
 Composite One-Piece  
 Gelcoat Exterior Sidewall  
 Aluminum Framing

### C. FLOOR

Carpet/Tile  
 Carpet Padding  
 5/8" Floor Decking  
 Batten Insulation  
 16" on Center Wood Framing  
 Polyethylene Moisture Barrier

### D. EXTERIOR

15M Penguin™ Heat Pump Central  
 Air Conditioner  
 One-Piece Bonded Windshield  
 Coated Aluminum Wheels  
 Frameless, Double-Pane,  
 Tinted Safety Glass Windows  
 Side-Hinged Baggage Doors with  
 Optional Pull-Out Tray





# THE NEWMAR CUSTOMER EXPERIENCE

The Newmar difference goes beyond our industry-leading motor coaches to provide you with an unrivaled ownership experience.



## QUALITY FROM THE START

Every Newmar is crafted one at a time by folks who have spent an average of eight years building them. And each coach we assemble must undergo more than 1,000 tests and checks before ever leaving our factory.



## CAREFULLY SELECTED DEALERS

We view our dealership network in terms of quality, not quantity. Each of our dealers acts as a partner in our shared mission to exceed your highest of expectations, for an ownership experience that's second to none from day one.



## EVERYTHING IN ONE PLACE

As a Newmar owner, you'll find resources specific to your coach through Newgle, an easy-to-use knowledge base that houses everything from user guides to technical support documents.



## FRIENDS FOR LIFE

Meet fellow owners through the Newmar Kountry Klub, a top social club for RV travelers that hosts rallies and other special events throughout the U.S. and Canada.



## SEAMLESS SERVICE

When you join the Newmar family, we pair you with a dedicated service specialist with expert knowledge of your exact coach. Available 24/7, our service specialists guarantee dealer warranty authorizations within four business hours and ship all in-stock parts the same day, free of charge.



## ROCK-SOLID PROTECTION

All models include a one-year/unlimited mileage limited warranty and a five-year, non-transferable structural warranty that covers your coach's superstructure in the event it fails to perform. Ask your Newmar dealer for more details.

# OUR PARTNERS

Newmar Quality Begins with the Company We Keep

You deserve class-leading performance from names you can trust. That's why we only work with suppliers dedicated to providing our customers with unrivaled quality, comfort, and support.



We create chemistry

## BASF

The Coatings division of BASF is a global expert in the development and production of innovative and sustainable OEM and refinish coatings that deliver solutions beyond your imagination.



## INDUSTRIAL FINISHES

Industrial Finishes has supported RV manufacturers for over four decades. The Industrial Finishes paint process delivers uncompromising quality, providing your coach with a true "Masterpiece" finish.



Driven By You

## FREIGHTLINER CUSTOM CHASSIS

Freightliner® Custom Chassis Corp. (FCCC) is renowned for delivering the industry's best ownership experience through exceptional 24/7 factory-direct support, exceptional ride and handling, and developing high-performance innovations such as DRIVETECH. It's the only RV driving system that prioritizes safety and automotive luxury by putting every command at your fingertips.



## RIVERPARK

At RiverPark, we proudly represent the leading brands in consumer electronics—brands you know and trust to provide exceptional quality and innovative technology. Newmar features Samsung's incredible 4K TVs, Xite Infotainment systems featuring Nav-N-Go Navigation, Bose® soundbars, and JBL and Infinity premium audio. Step into a 2023 Newmar and experience dazzling audio and video performance throughout the coach.



RV CHASSIS

## SPARTAN MOTORS

Spartan® Motors is an American company with over 30 years of experience designing and manufacturing the premier motorhome chassis, which provides superior performance, exceptional safety ratings, and industry-leading technology.





WHEN YOU KNOW THE DIFFERENCE<sup>SM</sup>