

2024 LUXURY MOTORCOACH

NEW AIRE



NEWMAR



Go farther, and feel right at home

Fit for adventure. Filled with luxury. The 2024 New Aire takes you farther, while keeping all the comforts of home close by. For adventurers with a taste for opulence, this coach is easiest to call home. Plus, with new features, upgrades, and amenities, there's no shortage of extravagance inside.



New Aire

Freightliner® Chassis Spartan® Chassis (Optional)



35' / 4 floor plans

Cummins L
Diesel Engine

450 HP

1250 lb./ft. torque

Rosyth Full-Paint
Masterpiece Finish™
Exterior



Cockpit

Industry-First Comfort Drive™ Adaptive Steering

Passive Steer Technology

Mobileye® Lane Tracking and Lane Departure System

Haptic Feedback in Driver Seat

Heated Driver and Passenger Seats

Power Lumbar and Footrest

Passenger Seat Workstation

Xite Dash Radio

10" Dual Monitor

Nav-N-Go Navigation System

Apple CarPlay®

HD 360 Camera System

Predictive Grid Lines

Tri-View Rear Camera*

Electronic Stability Control

Wireless Charger Mats





Cabin

**Four Décor Options:
Briarcliff*, Pierson*, Marvella, and Omni**

Visionary Tri-Fold Sofa**

50" Samsung® LED TV
Bose® Soundbar

Fireplace in Dry Bar

Bonded Bay-Like Windows



*New for 2024
**Additional furniture configurations available; see Features & Options for details

Cabin

Two 15K BTU Penguin™
Heat Pump Air Conditioners

Electric Radiant Heat Beneath
Main Floor Tiles

WiFiRanger Denali System
with Spruce Router

Silverleaf® Monitor



Floor plan 3539 with Briarcliff decor with Mink cabinets



Galley & Dinette

Samsung® Three-Door Residential Refrigerator
with Icemaker

30" Samsung® Convection Microwave

All-Electric Portable Induction Cooktop

Dishwasher in Drawer (Optional)

Super-Polished Solid-Surface Countertops

Large Pantry

Push-to-Release Drawer Slides

Pull-Out Shelves

Dedicated Serving Tray/Bakeware Space

Glazed Maple or Rift Oak Hardwood Cabinets

Available in Four High Gloss or Suede Finish Color Options

Soft-Close Cabinet Doors

LED Lights Undermounted in Pull-Out Pantry and Cabinets

Kitchen Window

Buffet Dinette*



**Additional dinette configurations available; see Features & Options for details*





Bedroom

King Bed*

Pillow Top Mattress
Adjustable Support Air Bed (Optional)

43" Samsung® 4K LED TV

Lighted Wardrobe

Safe
Shoe Storage



*Bed size varies by floor plan

Bathroom

Walk-Through Midship Bath*

Large Vanity

In-Mirror Lights

Tiled Shower Walls and Floor¹

Aqua Miser® Shower System

Linen Storage

Splendide® Two-Piece Stacked Washer and Dryer (Optional)

Chinook Dual Loop Heat with Continuous Hot Water

Super-Polished Solid-Surface Countertop

Cathedral Ceiling for Added Height (Rear Bath Floor Plans)





Exterior & Storage

**Industry-Exclusive Full-Paint
Masterpiece Finish™ with Cut and Buff**
Four New Graphic Design and Color Options

Girard® G2000 Power Side Awning
Wind Sensor
Remote Control
LED Lights

SilverStar® Ultra Headlight Bulbs

Exterior Entertainment Center (Optional)
43" Samsung® 4K LED TV
Bose® Soundbar

Basement Storage
Easy-Close Doors

**Dometic® 1.35 Cu. Ft. Freezer
on Pull-Out Tray** (Optional)

Lighted Front Grill Newmar Badge



Exterior

Lithium-Ion Battery System

Two Lithionics 320 AHR Battery Packs
Surge Guard Transfer Switch

Industry-Exclusive STAR Foundation

8.0 kW Cummins Onan® Diesel Generator

10-Watt Solar Panel (to charge chassis battery)

Four 110-Watt Solar Panels (Optional)



interior & exterior
Design Options



Mansfield



Awning Color: Charcoal Tweed

BRAIRCLIFF INTERIOR

a. Furniture/Fabric b. Flooring c. Counter Top



*Exterior colors and interior décor options can be matched to customer preference.

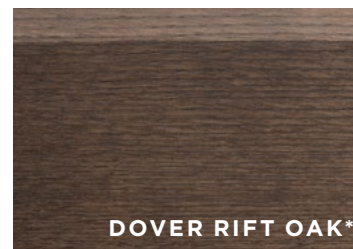
CABINET FINISHES



MINK RIFT OAK*



TOFFEE MAPLE*



DOVER RIFT OAK*



TUSCAN MAPLE*

*Available in High Gloss Finish

Newcastle



Awning Color: Charcoal Tweed

MARVELLA INTERIOR

a. Furniture/Fabric b. Flooring c. Counter Top



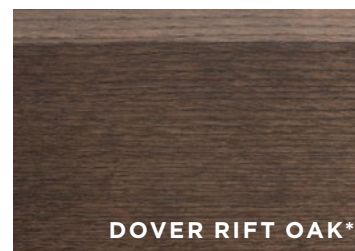
CABINET FINISHES



MINK RIFT OAK*



TOFFEE MAPLE*



DOVER RIFT OAK*



TUSCAN MAPLE*

*Exterior colors and interior décor options can be matched to customer preference.

*Available in High Gloss Finish

Plymouth



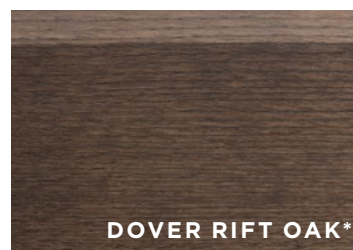
Awning Color: Charcoal Tweed

OMNI INTERIOR a. Furniture/Fabric b. Flooring c. Counter Top



*Exterior colors and interior décor options can be matched to customer preference.

CABINET FINISHES



*Available in High Gloss Finish

Rosyth

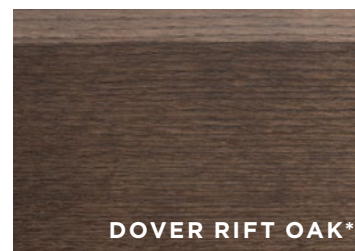


Awning Color: Charcoal Tweed

PIERSON INTERIOR a. Furniture/Fabric b. Flooring c. Counter Top



CABINET FINISHES



*Exterior colors and interior décor options can be matched to customer preference.

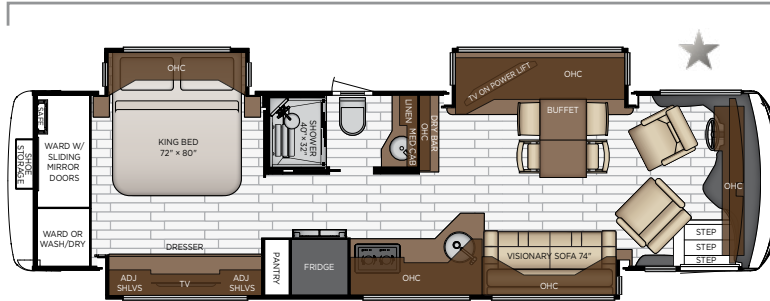
*Available in High Gloss Finish



Floor Plan Specifications

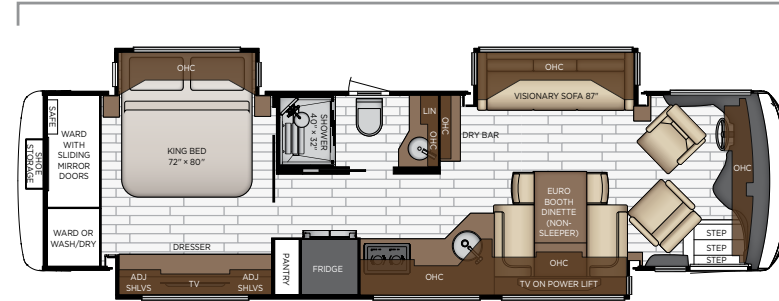


Length: 35' 10"



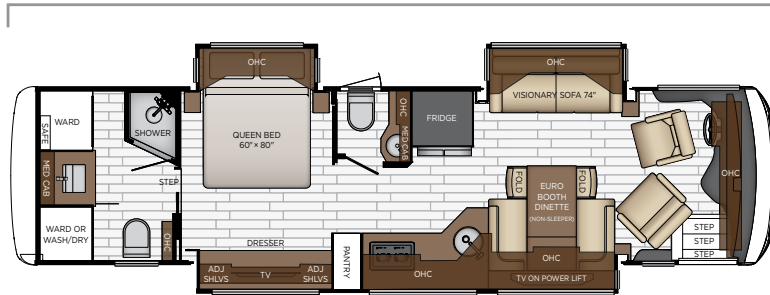
| | | | | |
|-------------|---------------------|---------|--------------|------------|
| 3539 | Length | 35' 10" | Grey Tank | 60 gal. |
| | Width | 101.5" | Sewage Tank | 40 gal. |
| | App. Overall Height | 12' 03" | Water Tank | 105 gal. |
| | Interior Width | 95.5" | Propane Tank | 0 |
| | Interior Height | 81.5" | Furnace | 50,000 btu |

Length: 35' 10"



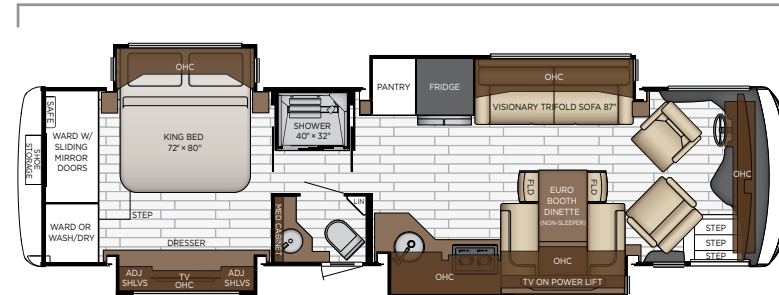
| | | | | |
|-------------|---------------------|---------|--------------|------------|
| 3543 | Length | 35' 10" | Grey Tank | 60 gal. |
| | Width | 101.5" | Sewage Tank | 40 gal. |
| | App. Overall Height | 12' 03" | Water Tank | 105 gal. |
| | Interior Width | 95.5" | Propane Tank | 0 |
| | Interior Height | 81.5" | Furnace | 50,000 btu |

Length: 35' 10"



| | | | | |
|-------------|---------------------|---------|--------------|------------|
| 3547 | Length | 35' 10" | Grey Tank | 60 gal. |
| | Width | 101.5" | Sewage Tank | 40 gal. |
| | App. Overall Height | 12' 03" | Water Tank | 105 gal. |
| | Interior Width | 95.5" | Propane Tank | 0 |
| | Interior Height | 81.5" | Furnace | 50,000 btu |

Length: 35' 10"



| | | | | |
|-------------|---------------------|---------|--------------|------------|
| 3549 | Length | 35' 10" | Grey Tank | 60 gal. |
| | Width | 101.5" | Sewage Tank | 40 gal. |
| | App. Overall Height | 12' 03" | Water Tank | 105 gal. |
| | Interior Width | 95.5" | Propane Tank | 0 |
| | Interior Height | 81.5" | Furnace | 50,000 btu |

Quality You Can Feel

Like a fine home, the 2024 New Aire is framed 16 inches on center, and is covered by a fiberglass roof with an integrated gutter rail.

| FREIGHTLINER® | | | | | | | | | | | |
|---------------|-----------|------------|-----------|------------|------------|-----------|----------|-----------|-----------|-----------|----------|
| FLOOR PLAN | ENGINE HP | AXLE RATIO | FUEL CAP. | WHEEL BASE | FRONT GAWR | REAR GAWR | TAG GAWR | GVWR | GCWR | APP. UVW | APP. NCC |
| 3539 | 450 | 4.78 | 90 gal. | 226 | 14600 lb. | 24000 lb. | n/a | 38600 lb. | 48600 lb. | 33700 lb. | 4900 lb. |
| 3543 | 450 | 4.78 | 90 gal. | 226 | 14600 lb. | 24000 lb. | n/a | 38600 lb. | 48600 lb. | 33950 lb. | 4650 lb. |
| 3547 | 450 | 4.78 | 90 gal. | 226 | 14600 lb. | 24000 lb. | n/a | 38600 lb. | 48600 lb. | 33500 lb. | 5100 lb. |
| 3549 | 450 | 4.78 | 90 gal. | 226 | 14600 lb. | 24000 lb. | n/a | 38600 lb. | 48600 lb. | 33450 lb. | 5150 lb. |
| SPARTAN® | | | | | | | | | | | |
| FLOOR PLAN | ENGINE HP | AXLE RATIO | FUEL CAP. | WHEEL BASE | FRONT GAWR | REAR GAWR | TAG GAWR | GVWR | GCWR | APP. UVW | APP. NCC |
| 3539 | 450 | 4.78 | 90 gal. | 226 | 14600 lb. | 24000 lb. | n/a | 38600 lb. | 48600 lb. | 33700 lb. | 4900 lb. |
| 3543 | 450 | 4.78 | 90 gal. | 226 | 14600 lb. | 24000 lb. | n/a | 38600 lb. | 48600 lb. | 33850 lb. | 4750 lb. |
| 3547 | 450 | 4.78 | 90 gal. | 226 | 14600 lb. | 24000 lb. | n/a | 38600 lb. | 48600 lb. | 33500 lb. | 5100 lb. |
| 3549 | 450 | 4.78 | 90 gal. | 226 | 14600 lb. | 24000 lb. | n/a | 38600 lb. | 48600 lb. | 33350 lb. | 5250 lb. |

NEW AIRE

The content in our literature depicts and describes products that are subject to change. For the most recent images and information, please visit [NewmarCorp.com](https://www.NewmarCorp.com).

Lengths, heights, widths, and dry weights are approximate. Weight will vary based on optional equipment added to the above base weight.

GAWR: Gross Axle Weight Rating is the maximum permissible weight for an axle.

GVWR: Gross Vehicle Weight Rating is the maximum permissible weight for a fully loaded motor coach.

GCWR: Gross Combination Weight Rating is the value specified by the manufacturer of the vehicle as the maximum allowable loaded weight of this motor coach and any towed trailer or towed vehicle.

UVW: Unloaded Vehicle Weight is the weight of this motor coach as built at the factory with full fuel, engine oil, and coolants. Does not include cargo, fresh water, propane gas, or dealer-installed accessories.

NCC: Net Carrying Capacity is the maximum weight of all occupants, including the driver, personal belongings, food, fresh water, waste water, propane gas, tools, tongue weight of towed vehicle, dealer-installed accessories, etc., that can be carried by the motor coach.

Specifications supplied by the chassis manufacturer.

New Aire R-Values:

Roof R-Value = 19

Sidewall R-Value = 11

Floor R-Value = 16

Basement R-Value = 4



Features & Options



EXTERIOR FEATURES

| |
|---|
| Full-Paint Masterpiece Finish™ with Clearcoat Finish and Diamond Shield Protection on Front Cap |
| Convex Chrome Exterior Mirrors with Remote Control, Defrost, and Turn Signals |
| Chrome Power Baggage Door Locks, Keyless Entrance Door with Touch Pad and Door Bell |
| Entrance Door with Automatic Step |
| Rear Hitch for Towing Car |
| Assist Handle at Entrance Door |
| Mud Flaps |
| Lighted Newmar Badge in Front Grill |
| Rear Protective Tow Guard with Stainless Steel Newmar Name Cutout |
| Exterior Storage Compartments Finished with Cargo Liner |
| Undercoating |
| Holding Tank Levels Displayed in Exterior Water Works Compartment |
| Hydraulic Leveling Jacks |
| Stainless Steel Exterior Trim Pieces and Entrance Door Kick Panel |

OPTIONS

| |
|---|
| Stainless Steel Trim Kit for Exterior Compartment Doors |
| Flag Pole Bracket |
| Storage Tray 13 X 58 Power Location-Bay 2 |
| Storage Tray 13 X 59 Non-Power Location-Bay 2 |
| Storage Tray 31 ½ X 58 Power Location-Bay 3 |
| Storage Tray 31 ½ X 59 Non-Power Location-Bay 3 |
| Storage Tray 31 ¼ X 32 Non-Power Location-Off Door Side-Bay 4 |
| Storage Tray 34 ½ X 59 LH Non-Power Location-Bay 4 |
| Storage Tray 36 ½ X 58 LH Power Location-Bay 4 |

CONSTRUCTION FEATURES

| |
|--|
| Fiberglass Roof and Integrated Gutter Rail |
| Gelcoated Fiberglass Exterior Sidewalls, Front and Rear Caps |
| Aluminum-Frame Sidewalls and Roof Construction, 16" on Center |
| 5/8" Foam Insulation Laminated in Sidewalls and Ceiling |
| Polar Pak R19 Batten Insulation on Roof |
| Automatic Lock Arms on Non Hydraulic Slideout Rooms |
| Automatic Lock Arms on Non Hydraulic Slideout Rooms-Paddle Style |
| Hydraulic Flat Floor Slideout System-Driver Side* |
| Egress Door with Ladder System |

WINDOWS, AWNINGS, & VENTS

| |
|---|
| Frameless Double-Pane Tinted Safety-Glass Windows |
| Fan-Tastic® Vent with Rain Sensor in Kitchen and Bathroom |
| Hardwood Louvered Cover on Fan-Tastic® Vent in Kitchen |
| Girard® G2000 Power Side Awning with Wind Sensor, Remote Control and LED Lights |
| Carefree Slideout Covers and Power Entrance Door Awning with LED Lights |
| One-Piece Tinted Windshield |
| Driver Side Power Window |
| Kitchen Window* |
| Window Above Bed |
| Large Non-Ventilated Living Room and Dinette Windows |

OPTIONS

| |
|---|
| Girard® Package-Two Nova Side Awnings, Slideout Covers and Power Entrance Door Awning |
| Girard® Window Awnings-Entrance Door and Slideout Toppers |
| Two Nova Awnings |
| Vented Windows in the Sofa, Dinette and Kitchen Areas |

CHASSIS FEATURES

| |
|--|
| Freightliner® 450Hp, 35' New Aire |
| Aluminum Wheels |
| Electronic Chassis Information Center in Dash |
| Dash Panel Optiview on Freightliner® |
| Valid Digital Glare Free Dash on Spartan® Chassis |
| Electronic Stability Control |
| Steering Wheel Nine Function Switch Pod in Center on Spartan® Chassis |
| Cruise Control |
| IFS Front Suspension |
| Manual Tilt/Telescope Steering Wheel with VIP Smart Wheel |
| Comfort Drive™ Steering with Power Column and Adjustable Control |
| V-Ride Drive Axle Suspension on Freightliner® |
| Valor Generation 3 TPMS System on Spartan® Chassis |
| Recessed Fuel Fills with Crossover to Fill from Either Side |
| Back-Up Alarm |
| Anti-Lock Braking System |
| Chassis Battery Disconnect |
| Tire Pressures Displayed on Glass Dash |
| Keyless Ignition |
| OnGuard™ Collision Mitigation Adaptive Cruise System with Following Distance Control |

Mobileye® Lane Tracking and Lane Departure Warning System

Module Cummins Accumen on Freightliner® Chassis

OPTIONS

Spartan® 450Hp, 35' New Aire

AIR CONDITIONING & HEATING

Two 15K BTU Penguin™ Heat Pump Air Conditioners

Chinook Dual Loop Heat with Continuous Hot Water

Dash Heater and Air Conditioner

Driver and Passenger Dash Overhead Ventilation System

Dual Zone HVAC in Cockpit Area

Wall Mounted Sensors for Heating and Air Conditioning

Roof Air Conditioning Drainage System

Electric Radiant Heat Installed Below Main Floor Tile

ELECTRICAL FEATURES

8.0 kW Cummins Onan® Diesel Quiet Series Generator

50 Amp Electrical Service with Flexible Cord with Automatic Transfer Switch

Battery Disconnect Switch for House Battery

10-Watt Solar Panel to Charge Chassis Battery

Lithium Ion 640 AHR Battery System with Two 3000-Watt True Sine Inverters

12 Volt Auxiliary Receptacle on Dashboard

Emergency Engine Start Switch

Daytime Running Lights

Engine Block Heater

Fog Lights

Energy Management System

Exterior Security Lights

Midship Side Turn Signals

KIB Backlight Switch Plates for Interior Lighting

KIB Multiplex Lighting Control System

KIB Touch Screen Interior Light and Shade Controls

LED Ceiling Lights

LED Lighting in Pull-Out Pantry, Kitchen and Bathroom Base Cabinets

LED Lights Installed Under Door Side Slideouts

Lights in Wardrobes

Lights in Vanity Mirrors

Dimmable Reading Lights at Head of Bed

Manually Operated Hold-To-Run Slideout Switch

Automatic Generator Start on Low Battery or Temperature Setting

Cable TV Connection

Interior Courtesy Lights

USB Outlet at Dinette and Bedroom Night Stand

USB Outlet at Dash for Driver Use

USB Outlet at Passenger Seat Area

110 Volt Recept in Bed Overhead with Two Pass-Through Ports

Wireless Charging Mats Built into Dash and Passenger Console

Power Rewind Wheel with 33' Cord*

Recessed Docking Lights

Multiplex Monitor System with One Monitor

Silverleaf® Multiplex Electrical Wiring System

Solar Prep with Six Gauge Wire from Roof to House Battery Compartment

Spare Fuses in Chassis and House Fuse Panels

Transfer Switch with Surge Protector

System Control App to Control Numerous Features from Personal Device

OPTIONS

Four Flexible 110-Watt Solar Panels on Roof

LED Strip Lighting Installed Under Off Door Side Slideouts

PLUMBING & BATH FEATURES

Demand Water System

Aqua Miser® Shower System

Sewage Holding-Tank Rinse

Dometic® 321 China Bowl Stool or Macerator Stool*

Tiled Shower Walls and Floors with Glass Door

Fold-Down Shower Seat

Water Filter for Entire Unit

Exterior Shower

Soap Dispenser in Shower

Automatic Fill for Fresh Water Tank

Power Water Hose Reel

Hot Water Line to Generator Area*

OPTIONS

Assist Handle in Each Shower

RV Sanicon Turbo System

INTERIOR FEATURES

| |
|---|
| Designer Feature Ceiling and Cathedral Ceiling in Bedroom* |
| Tile Floor in Kitchen, Bathroom, Bedroom and Living Areas |
| Auto Motion Power Shades and Lambrequins |
| Auto Motion Power Shades for Windshield and Driver/Passenger Side Windows |
| Interior Assist Handle at Main Entry Door |
| Fitted Cam-Quilted Bedspread with Accent Pillows |
| Dash Panel Color Coordinated Vinyl Wrapped |
| Hardwood Raised Panel Interior Passage Doors |
| Power Stepwell Cover |
| Wastebasket in Kitchen Base Under Sink |
| Safe Located in Bedroom Wardrobe |
| Maximized Shoe Storage Shelves Recessed in Rear of Wardrobe* |

CABINETS & FURNITURE

| |
|---|
| Toffee Maple Hardwood Cabinets with Slab Beveled Doors-Suede Finish |
| Concealed Hinges on Cabinet Doors |
| Super-Polished Solid-Surface Countertop in Kitchen with Undermounted Stainless Steel Sink and Sink Covers |
| Super-Polished Solid-Surface Countertop in Bathroom and Bedroom |
| Lifts on Bed Top |
| Passenger Seat Work Station |
| Pull-Out Pantry Shelves* |
| Drawers with Dove Tail Self-Closing Full Extension Ball Bearing Guides |
| Soft-Close Cabinet Doors* |
| Ultra Leather Sofas and Driver/Passenger Seats |
| Front Seats with Six-Way Power-Lumbar, Recline, Footrest and Standard Width Passenger Seat |
| Passenger Seat Standard Width (Same Width as Driver Seat) |
| Heated Driver and Passenger Seats |
| Plush Pillow Top Mattress |
| Visionary Trifold Sofa |
| Euro Booth Dinette with Two Table Leaves and Two Folding Chairs* |
| Extended Rotation Concealed Hinge for Washer and Dryer Cabinet Door |
| Molded Silverware Divider Tray |
| Driver Seat with Vibrator for Mobileye® System |

OPTIONS

| |
|--|
| Dover Rift Oak Cabinets with Slab Beveled Doors-High Gloss or Suede Finish |
|--|

| |
|---|
| Mink Rift Oak Cabinets with Slab Beveled Doors-High Gloss or Suede Finish |
| Toffee Glazed Maple Cabinets with Slab Beveled Doors-High Gloss Finish |
| Tuscan Glazed Maple Cabinets with Slab Beveled Doors-High Gloss or Suede Finish |
| Fixed Convertible Dinette with Two Fixed and Two Folding Chairs that Face to Window |
| Two Recliners, Lampstand and Reading Lights |
| Powered Theater Seating with Reading Lights |
| Powered 74" Theater Seating |
| Powered 87" Theater Seating |
| R5 Radius Corner Mattress |
| Passenger Seat Extra Wide |

APPLIANCES & ACCESSORIES

| |
|---|
| Stainless Steel Samsung® 30" Convection Microwave |
| Air Horns |
| Residential Refrigerator with Icemaker-Three Door Stainless Steel |
| Prep for Two-Piece Washer and Dryer |
| All Electric with Portable Induction Cooktop |

OPTIONS

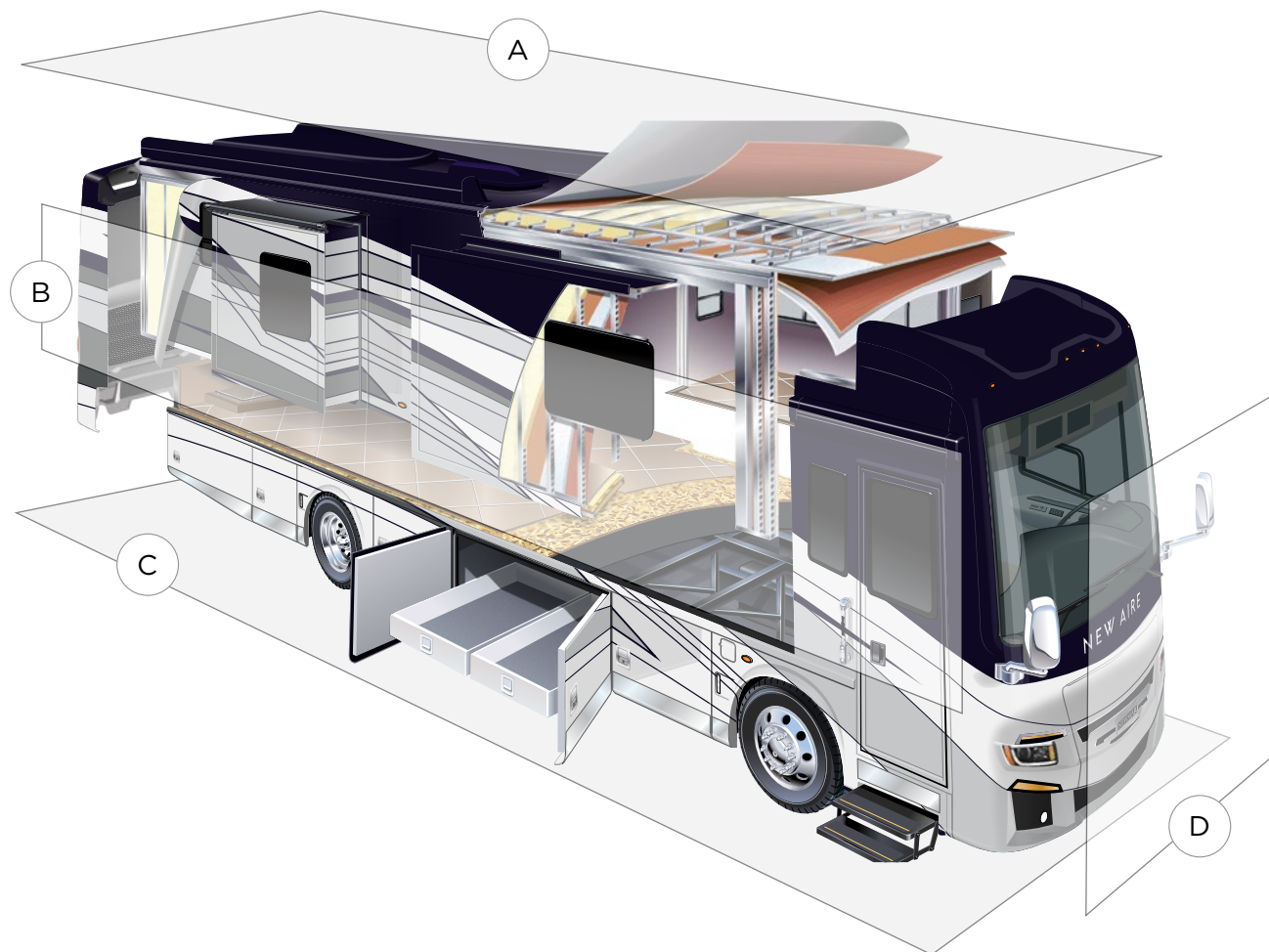
| |
|--|
| Splendide® Two-Piece Stacked Washer and Dryer |
| Dishwasher in Drawer with Stainless Steel Front |
| Dometic 1.35 Cf Freezer on Pull-Out Tray in Exterior Compartment |
| Central Vacuum with Tool Kit |
| Fireplace in Dry Bar |

AUDIO, VIDEO & ACCESSORIES

| |
|--|
| Samsung® 50" TV in Living Area |
| Samsung® 43" 4K TV in Bedroom |
| Bose® Soundbar Sound System |
| Xite Dash Radio with Apple CarPlay®, Dual 10" Monitors with Nav-N-Go Navigation System |
| Rearview Color Monitor System with Audio |
| Side-View Cameras Displayed Onto Rear View Monitor Screen |
| Winegard Rayzar Automatic Digital TV Antenna |
| Satellite Dish Prep on Roof |
| TV Jack and 110 Volt Recept in Door Side Exterior Storage Compartment |
| Cat 6 TV Cables |
| Internet Connectivity for Remote Access to Motorhome |
| WiFiRanger Denali/Spruce LTE |

| |
|---|
| Radio SiriusXM® Capability with Antenna (Does Not Include Monthly Subscription) |
| 10 Bc Fire Extinguisher, Smoke Detector, Propane and Carbon Monoxide Detector |
| OPTIONS |
| Exterior Entertainment Center in Storage Compartment with Samsung® 43" 4K LED TV and Bose® Soundbar |
| Exterior Entertainment with Samsung® 43" 4K TV in Sidewall with Bose® Soundbar |
| Extra Monitor on Passenger Side |
| Universal Toll Module |
| Universal Remote Control |
| WiFi System Everest with Aspen Interior Router |
| Winegard Automatic Dome Satellite Dish-for DISH STD/HD, DIRECTV STD and Bell Canada |
| Winegard Automatic Open Face Satellite Dish-for DISH HD and Bell HD TV |
| Winegard Automatic Open Face SWM Satellite Dish-for DIRECTV |
| Xite HD 360 Camera System with Predictive Grid Lines and Tri-View Rear Camera |





A. ROOF

Fiberglass Roof
Batten Insulation
A/C Ducting
16" on Center Aluminum Rafter Framing
Kraft Paper Vapor Barrier
5/8" Bead Foam
3/16" Panel
Padded Vinyl Overlay

B. SIDEWALL

Interior Wall Panel
5/8" Bead Foam
Kraft Paper Vapor Barrier
Batten Insulation
Composite One-Piece
Gelcoat Exterior Sidewall
Aluminum Framing

C. FLOOR

Carpet/Tile
Carpet Padding
5/8" Floor Decking
Batten Insulation
16" on Center Wood Framing
Polyethylene Moisture Barrier

D. EXTERIOR

15M Penguin™ Heat Pump Central
Air Conditioner
One-Piece Bonded Windshield
Coated Aluminum Wheels
Frameless, Double-Pane,
Tinted Safety Glass Windows
Side-Hinged Baggage Doors with
Optional Pull-Out Tray

The Newmar Customer Experience

The Newmar Difference™ goes beyond our industry-leading motor coaches to provide you with an unrivaled ownership experience.



Quality from the Start

Every Newmar is crafted one at a time by folks who have spent an average of eight years building them. And each coach we assemble must undergo more than 1,000 tests and checks before ever leaving our factory.



Carefully Selected Dealers

We view our dealership network in terms of quality, not quantity. Each of our dealers acts as a partner in our shared mission to exceed your highest of expectations, for an ownership experience that's second to none from day one.



Everything in One Place

As a Newmar owner, you'll find resources specific to your coach through Newgle, an easy-to-use knowledge base that houses everything from user guides to technical support documents.



Friends for Life

Meet fellow owners through the Newmar Kountry Klub, a top social club for RV travelers that hosts rallies and other special events throughout the U.S. and Canada.



Seamless Service

When you join the Newmar family, we pair you with a dedicated service specialist with expert knowledge of your exact coach. Our service specialists guarantee dealer warranty authorizations within four business hours and ship all in-stock parts the same day, free of charge.



Rock-Solid Protection

All models include a one-year/unlimited mileage limited warranty and a five-year, non-transferable structural warranty that covers your coach's superstructure in the event it fails to perform. Ask your Newmar dealer for more details.

Our Partners

The Newmar Difference™ begins with suppliers dedicated to providing our customers with unrivaled quality, comfort, and support.



BASF

The Coatings division of BASF is a global expert in the development and production of innovative and sustainable OEM and refinish coatings. Coatings by BASF—solutions beyond your imagination.



Driven By You

*Freightliner
Custom Chassis*

Freightliner Custom Chassis are renowned for their exceptional ride, excellent maneuverability, advanced technology, and nationwide 24/7 factory-direct support.



Industrial Finishes

Industrial Finishes has supported RV manufacturers for over four decades, offering paint products that deliver uncompromising quality and provide your coach with a true Masterpiece™ finish.



RIVERPARK

From Samsung® 4K TVs and Xite Infotainment systems to Bose® soundbars and JBL and Infinity premium audio systems, RiverPark helps you experience a higher level of technology in your Newmar coach.



Spartan Motors

An American company with over 30 years of experience in designing and manufacturing the premier motorhome chassis, Spartan delivers superior performance, exceptional safety ratings, and industry-leading technology.



WHEN YOU KNOW THE DIFFERENCESM