

BUILDING ON OUR LEGACY

2025 Newmar Dealer Meeting

2026 BAY STAR GAS MOTOR COACH

EXTERIORS

CALVERT



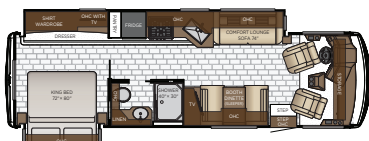
ANNAPOLIS



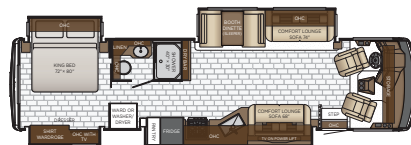
WILLIAMSBURG



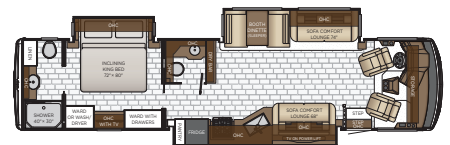
FLOOR PLANS



NEW 3114



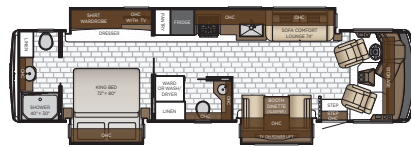
3626



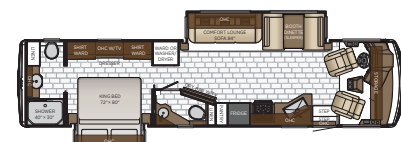
3826



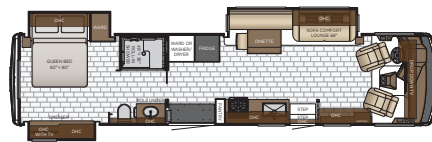
3225



3629



NEW 3609



3811



CHASSIS
FORD



ENGINE HP
335



TORQUE
468



FUEL CAPACITY
80

WHAT'S NEW FOR 2026

FLOOR PLAN

Bay Star 3114 (New)

This all new 3114 floor plan reflects a modification of our most popular 3014 floor plan to accommodate a king size bed. Still the shortest Bay Star floor plan, its size allows access where restrictions prevent other coaches from going. A patio-side dinette transforms everyday moments into memorable experiences with panoramic dining views.

Bay Star 3609 (Returning from a few years ago).

Floor plan 3609, a beloved classic, returns re-imagined.

CABINETS & FURNITURE:

- Introducing new cabinet color, Cove.
- Two-Tone cabinet color option now available with Cove and Chiffon.

ELECTRICAL

- A Victron 2000W Inverter is now standard.

EXTERIOR:

- There are three new exterior graphic options available for 2026: Calvert, Annapolis, and Williamsburg.
- Baggage doors with formed exterior skin.

INTERIOR:

- Contemporary Woven Material has now replaced carpeting in the slide rooms.
*Please note that carpet will continue to be used in closets, non-exposed dinette floors, and Gas cockpits.

PLUMBING & BATH:

- Water filter for entire unit is now standard.

WINDOWS, AWNINGS, VENTS & DOORS:

- Bedroom end wall windows are 2" taller.

OPTIONS:

- The option for theater seating has been added to the 3811 (option # K352).
- A new option for an exterior TV is available on the 3114.

