

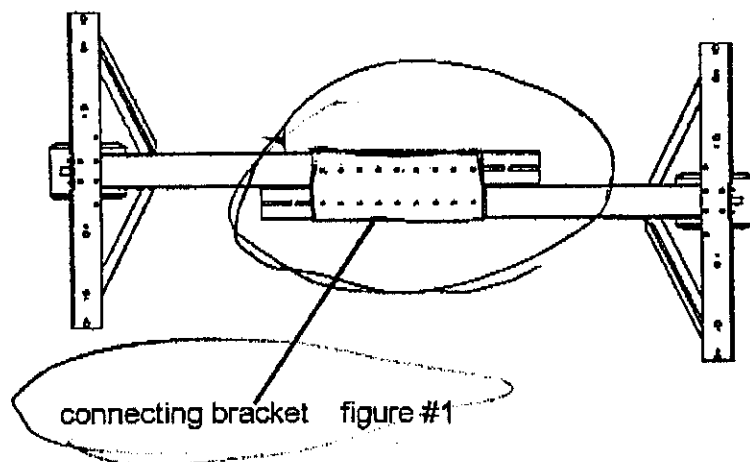
POWER TWIN II ASSEMBLY INSTRUCTIONS

(See reverse side parts breakdown)

STEP 1: Attach mounting plate part #39-841647(item 2) to main assembly channel part #39-841649(item1) using (4) 5/16"x1" carriage bolts and (4) nylock nuts. Make sure the mounting plate is square to the main channel assembly before tightening the nuts.

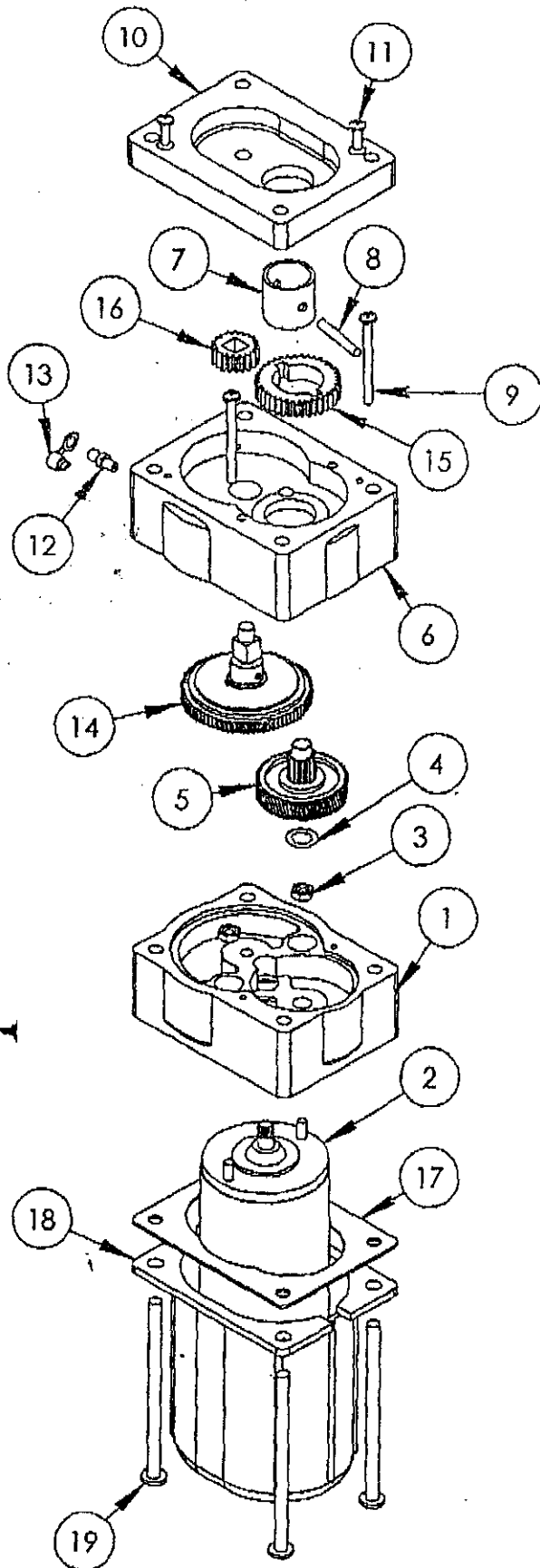
STEP 2: Attach the (2) arm support braces part# 39-841632 (item 13) to the mounting plate part #39-841647 (item 2) using (2) 1/2"-13 x 1 1/4" hex bolts and (2) 1/2"-13 nylock nuts. Place the 1/2" plastic washer part # 39-114006 (item 11) between the arm and the mounting bracket. Attach the other end of the arm support braces to the leg assembly part # 39-841653 (item 8) using (1) 1/2"x4 1/2" hex head bolt and (1) 1/2"-13 nylock nut by placing the pivot spacer part # 39-841655 (item 10) inside the leg assembly and pushing the bolt thru the one side of the leg, thru the spacer and out the other side of the leg channel. Be sure to place the plastic washer between the arm and the leg brace before pushing the bolt thru the hole. Tighten all bolts and nuts until snug. Do not over tighten as these are pivot points.

STEP3: Measure the outside width of the main frame channel of your RV. Now lay out the (2) Power Twin assemblies(see figure #1) and adjust the inside distance between the (2) mounting plates to the same as the outside dimension of your RV frame. Take connecting bracket part # 39-841642 and position it over the (2) side by side main channels (item 1). and bolt by using (8) 5/16"-18 x 1" hex head bolts with washes and nylock nuts. Do not tighten at this time.



STEP4: Now attach the Power twin II assembly to the frame by using the holes provided in the mounting plate(item 2) and (6 on each side) 3/8"x1 1/4" hex head bolts and nuts or 3/8" hex head tec screws.(not included) Do not use any fasteners smaller than 3/8" !

STEP5: To finish assembly, now go back and tighten the (8) bolts and nuts at the connecting bracket part# 39-841642. (see figure #1) You are now ready to wire the switches to your motor assemblies and connect to the 12 volt power supply.



POWERTWIN II

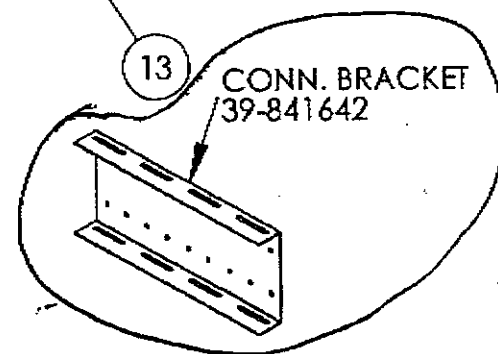
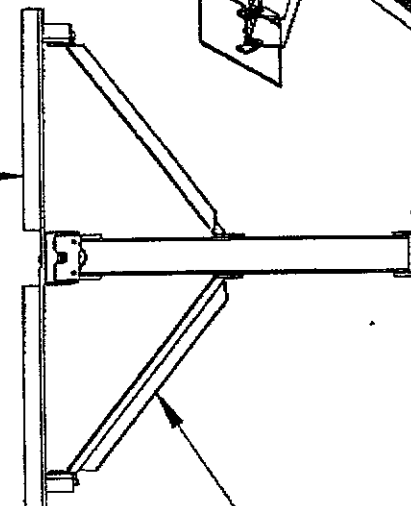
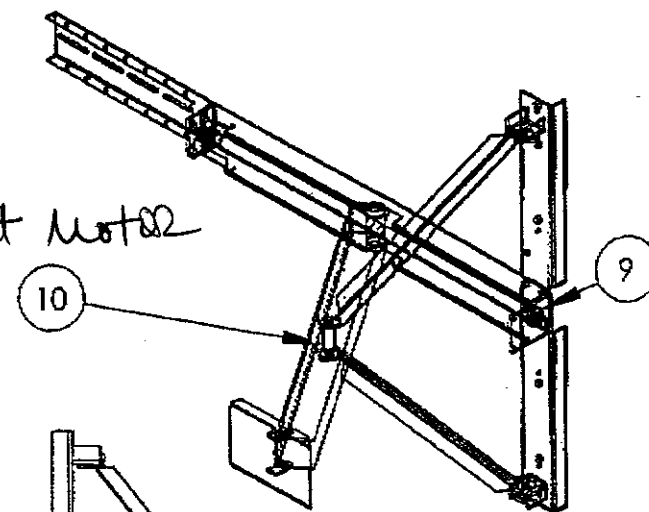
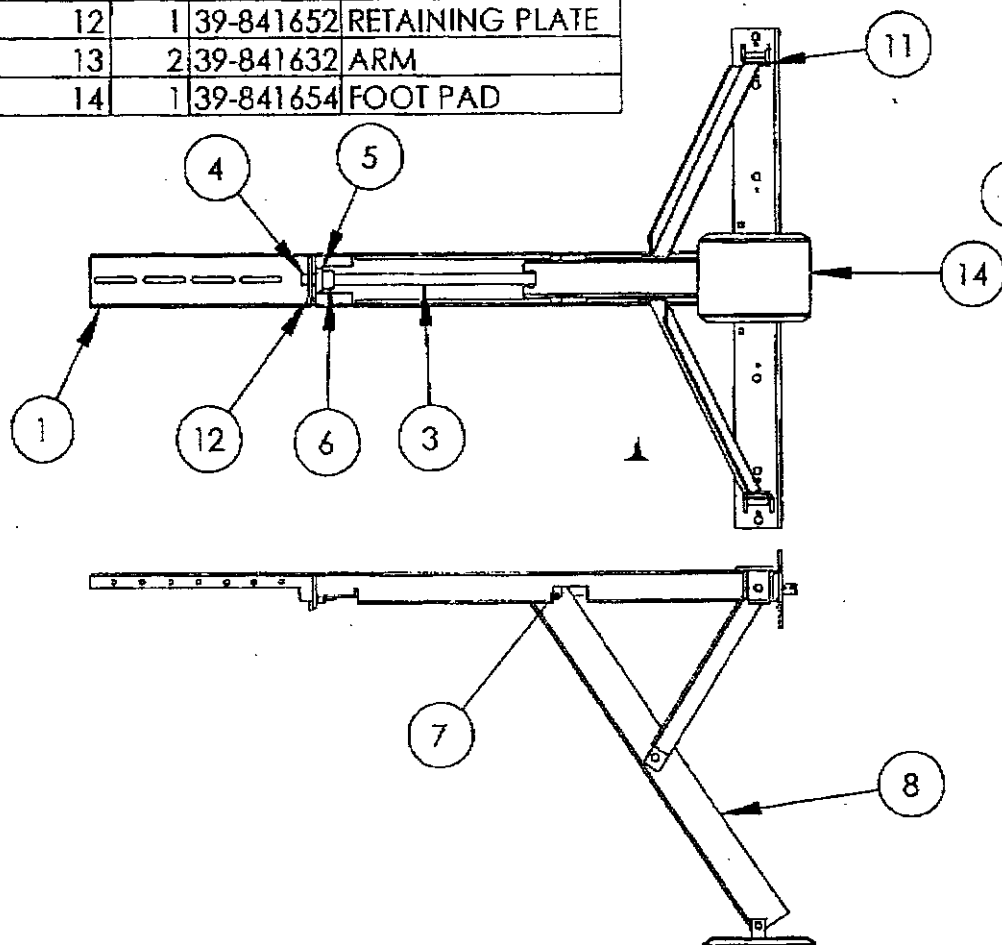
MOTOR ASSEMBLY EXPLODED VIEW

NO.	PART NO.	DESCRIPTION
1	17-741069	MOTOR HOUSING
2	17-840016.001	MOTOR <i>04354</i>
3	17-113303	#10-32 NUT
4	17-141010.008	WASHER
5	17-840028	NYLON GEAR ASSY
6	17-741032	CLUTCH HOUSING
7	17-741023	DRIVE SLEEVE
8	17-741021	DRIVE PIN
9	17-Y-12925	#8 X 2" SCREW
10	17-741042	HOUSING PLATE
11	17-Y-12926	#8 X 1/2" SCREW
12	17-143230	GREASE FITTING
13	17-143231	GREASE CAP
14	39-840006.003	CLUTCH <i>08892</i>
15	39-741413	DRIVE GEAR
16	39-741414	GEAR
17	17-141008.003	GASKET
18	39-741622	MOTOR COVER <i>0204</i>
19	17-113369	1/4-20 X 4.25" BOLT

ITEM NO.	QTY.	PART NO.	DESCRIPTION
1	1	39-841649	MAIN CHANNEL
2	1	39-841647	MOUNTING PLATE
3	1	39-841636	JACK SCREW
4	2	17-741051	COLLAR
5	1	39-143463	BEARING
6	2	17-741064	PIN
7	1	39-741606	NUT
8	1	39-841653	LEG
9	2	17-113402	WASHER
10	1	39-841655	SPACER
11	4	39-114006	PLASTIC WASHER
12	1	39-841652	RETAINING PLATE
13	2	39-841632	ARM
14	1	39-841654	FOOT PAD

Ultra-Fab Products Inc.
POWERTWIN 2
39-841700

05973 w/put motor



5/15/03