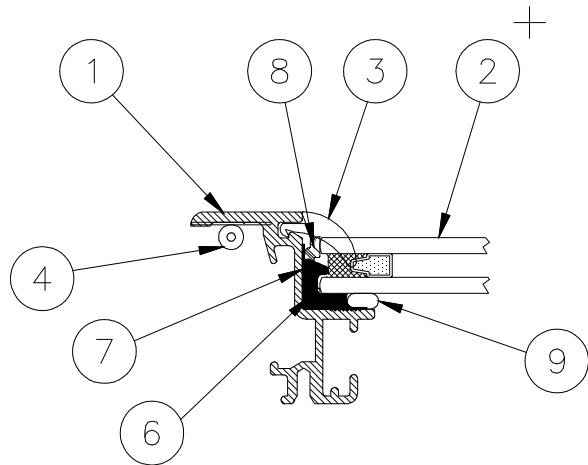


F  
E  
D  
C  
B  
A

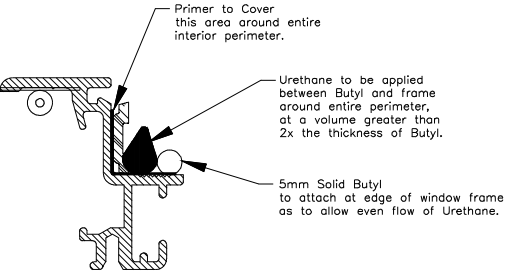
8

A A



SECTION A-A  
SCALE : 4x

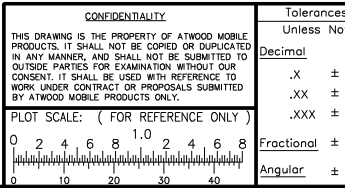
- NOTES:
- 1) INSIDE VIEW, LEFT HAND SUB-ASSEMBLY SHOWN.
  - 2) P/N 490598 NOT SHOWN PACKED SEPARATELY.
  - 3) INSIDE OF WINDOW TO BE TRIMMED OF EXCESS URETHANE & BUTYL BEFORE SHIPPING.
  - 4) GLASS SEPERATOR IS NOT TO BE VISIBLE FROM EITHER SIDE.
  - 5) TO BE BUILT W/WI 04222004



SCALE : FULL

15			
14			
13			
12			
11			
10			
9	490798	5.0 mm BUTYL	14.35 FT. (B1)
8	132-028125	SETTING BLOCK - STATIONARY GLASS (DUAL PANE)	8
7	490677	ALUMINUM PRIMER	A/R
6	490676	ADHESIVE URETHANE	.5 TUBE
5	490781	TRIM FRAME SUB-ASSEMBLY	1
4	154-041549	BUTYL TAPE 5.0MM FOAM CORE	14.35 FT.
3	490692	GLAZING VINYL	14.35 FT.
2	490787	DUAL PANE GLASS ASSEMBLY	1
1	490784	FLUSH WINDOW FRAME SUB-ASSEMBLY	1
ITEM NO.	PART NUMBER	DESCRIPTION	QTY.

☐ = IDENTIFIES SIGNIFICANT CHARACTERISTICS



A2 B2	EC6565	B	2) ADDED NOTES 3,4, & 5 1) ADDED 490798	DM	GE	6/2/04
~	N6538	AR	RELEASED FOR PRODUCTION	DM	GE	4-22-04
~	~	*A	490779 WAS RE-G-0314-1-41	DM	GE	4-22-04
~	~	**	AS DRAWN	GE		2-28-03
ZONE	E.C. NO.	REV. LETTER	DESCRIPTION OF CHANGE	BY	APPR.	DATE
DRAWN BY:	GE	APPROVED BY:				
DATE:	2-28-03	DATE:				
DRAWING SCALE:	1/4	& NOTED	FLUSH FRAME WINDOW ASSEMBLY			
FILE NAME:	490779	SHEET SIZE:	C	PART NUMBER:	(A) 490779	SHEET NO.



**Atwood Mobile Products**  
LaGrange Operations, LaGrange, In.  
Elkhart Operations, Elkhart, In.