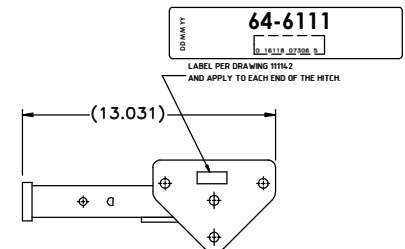
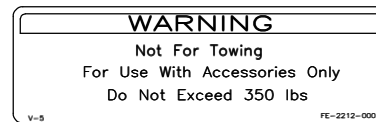


122404 LOGO LABEL  
VERTICALLY IN AREA SHOWN

MAIN WELD ASSEMBLY  
KH-2255-000

FE-2212-000




#### NOTES

1. LABELS MUST BE ORIENTATED AS SHOWN

MATERIAL SPECIFICATION		FINISH SPECIFICATION	
GOSHEN:		GOSHEN:	BLACK PAINT CEQUENT ES-006
HUNTSVILLE:		HUNTSVILLE:	
DO NOT SCALE DRAWING		INTERPRET DRAWINGS IN ACCORDANCE WITH ANSI DRAFTING MANUAL Y14.5	
©2004 Cequent Towing Products, Inc. All rights reserved. Neither this drawing nor any portion of this drawing may be reproduced (e.g., photocopied, electronically scanned, or copied in any manner) without written permission of Cequent Towing. This drawing contains proprietary trade secrets of Cequent Towing. By viewing this drawing the viewer agrees to maintain the confidentiality of the information contained herein and not to use the information in any way or disclose the information to anyone else without written permission of Cequent Towing.			

17161	C	LABEL WAS FE-6501-000	MLL	MAH	05/08/12
10777	B	REVISED TITLEBLOCK FOR GOSHEN MFG	TAM	WDG	7-25-08
AUTH.	REV	CHANGE RECORD	DR	CK	APP
					DATE

		<b>CEQUENT</b> TOWING PRODUCTS	
TOLERANCE UNLESS OTHERWISE SPECIFIED: 3 PLACE DECIMALS ± .060 HOLE Ø AND SLOT SIZE ± .010 ANGULAR DIMENSIONS ± 2.0°			
DESCRIPTION: HITCH: NEWMAR 5TH WHEEL			
SHT 1 OF 1	PART NO	64-6111	REVISION C