
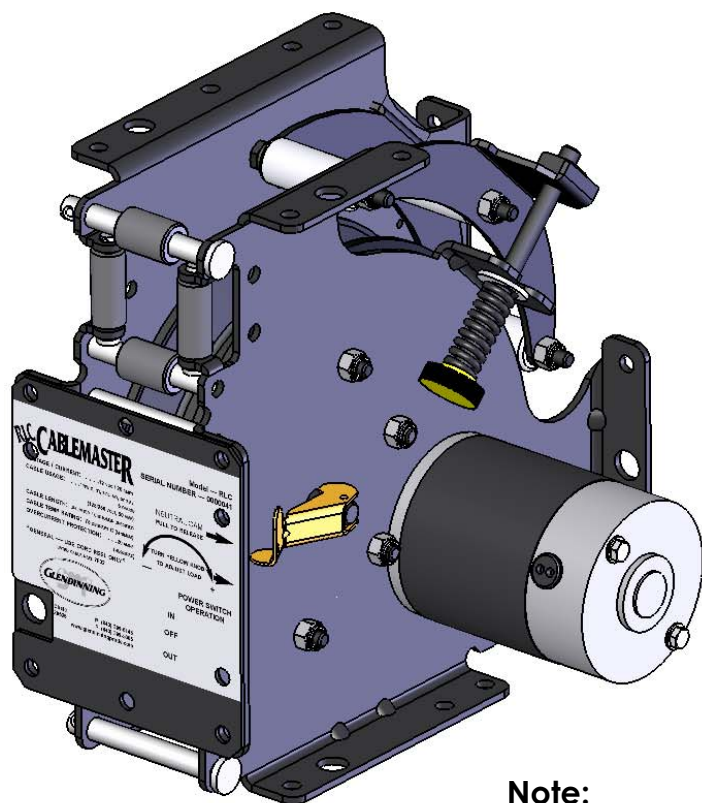


REV	DESCRIPTION	ECN #	INIT	DATE
 D	Added note about testing and cage tension.	4866Pq	DWB	6/25/08



**Note:**

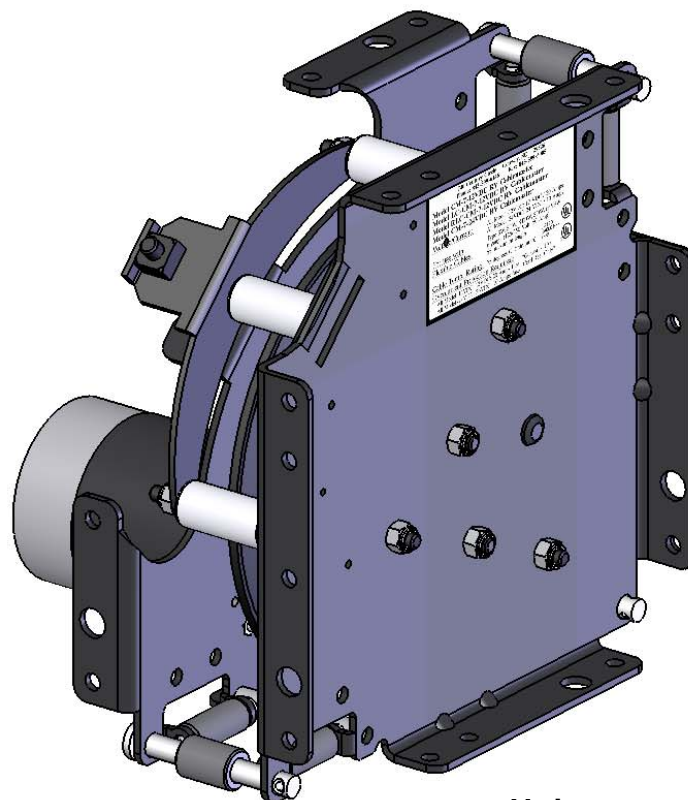
Make sure to test each unit electrically using Newmar sample cable w/ cage tension set using 1 3/8" gauge.  
After test, loosen cage tension until nut is at the end of the tension screw.



**Note:**

For wiring see *RLC WD 01*  
in RLC flip chart.

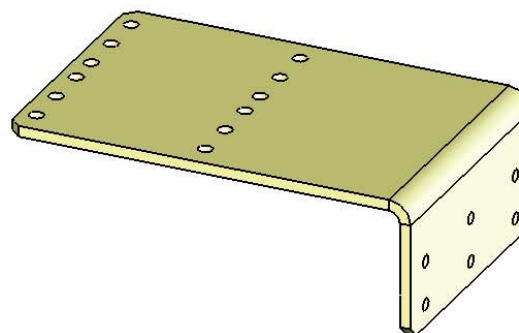
(90004)  
Switch Cover



(51435-1)  
Bracket - RLC Wall Mount

**Note:**

2 COLLARS IN KIT.  
Place bracket hardware  
in plastic bag and attach  
to bracket.


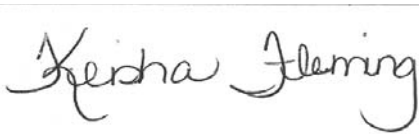

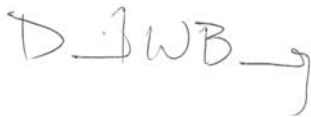


GLENDINNING MARINE PRODUCTS INC.			
Newmar RLC New Side Mount			
DWG NO. <b>KNE005</b>			
SIZE A	SCALE NTS	REV. D	
DRAWN BY DWB	DATE 7/27/2006		



**GMP – KNE005**  
**REVISION TRACKING & SIGNATURE PAGE**

REVISIONS	ECN #	CHANGES	By	DATE
A	3710Pq	Initial release into controlled location	DWB	08/04/06
B	3985Ms	Changed wire color from brown to green	DWB	01/10/07
C	4629Pq	Removed wiring diagram, see CM flip chart	DWB	02/20/08
D	4866Pq	Added cage tension instructions	DWB	6/25/08

Team Leader:			Date: 6/25/08
Engineer:			Date: 6/25/08