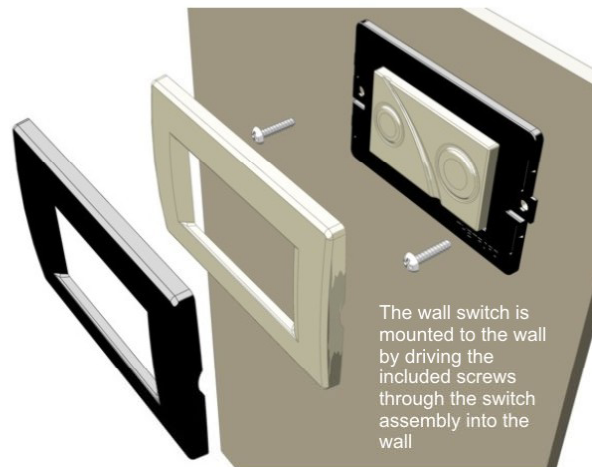


# Sensor Installation

## New Tecma Controller & Wall Switch

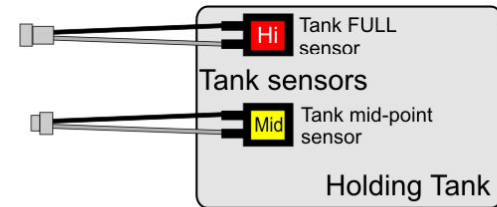
5 Jan 06

### Bezel and Tank Sensors

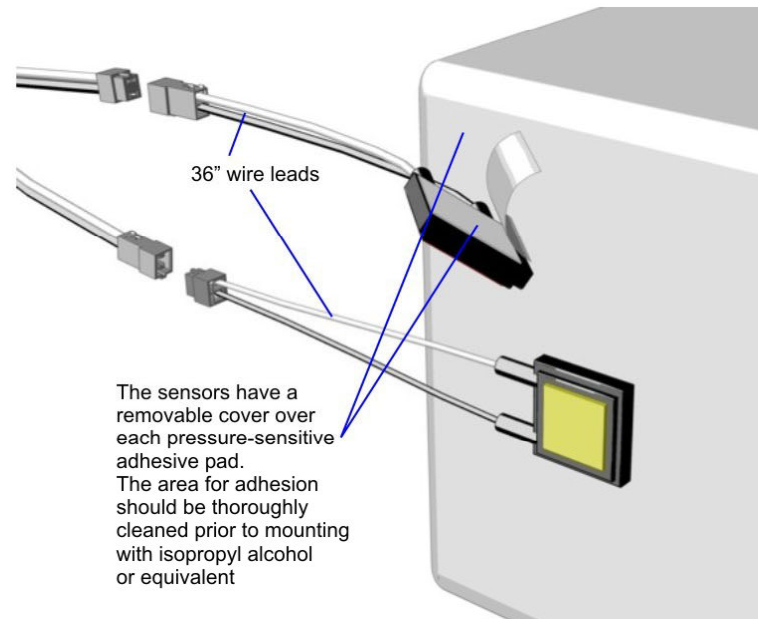


Toilet includes both Black & Bone colored Thetford bezels allowing for the best color choice per bathroom decor.

The wall switch is mounted to the wall by driving the included screws through the switch assembly into the wall

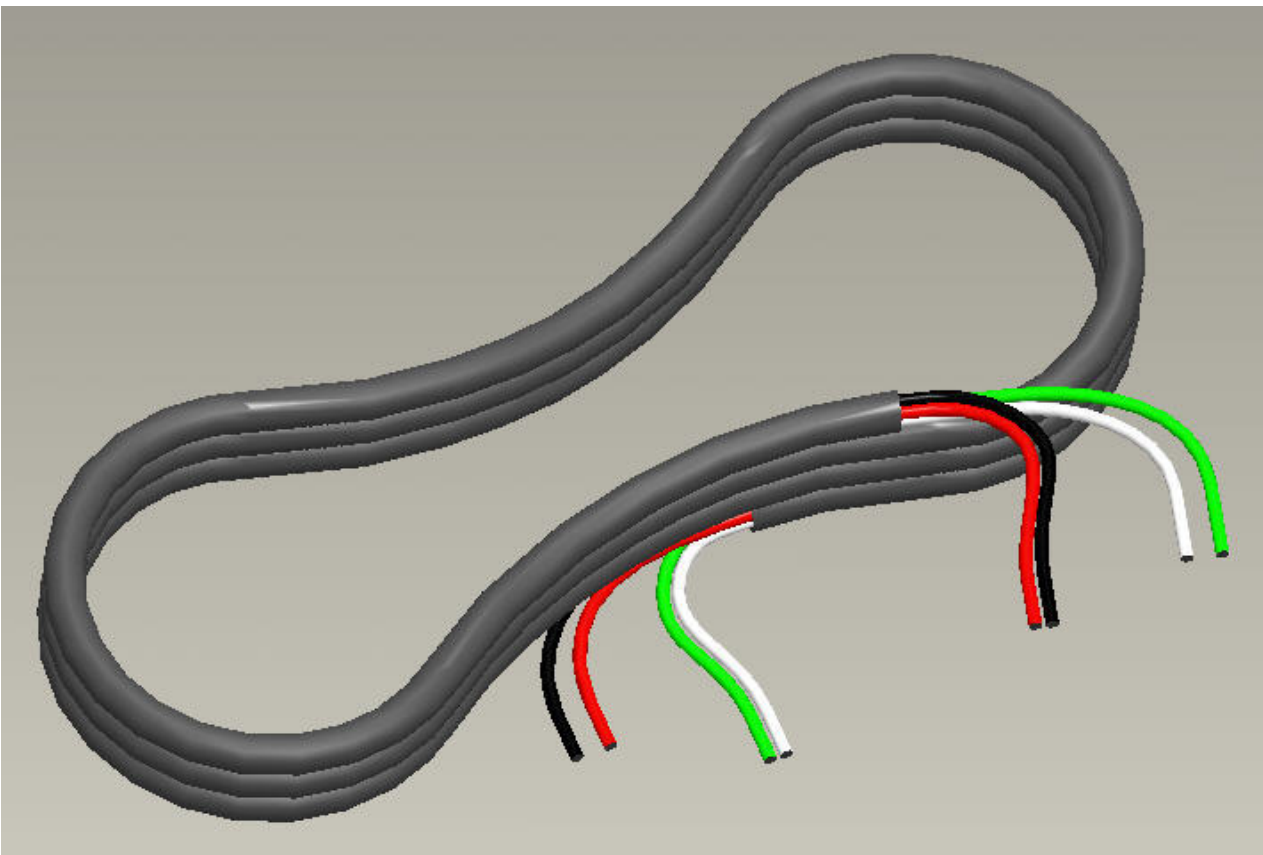
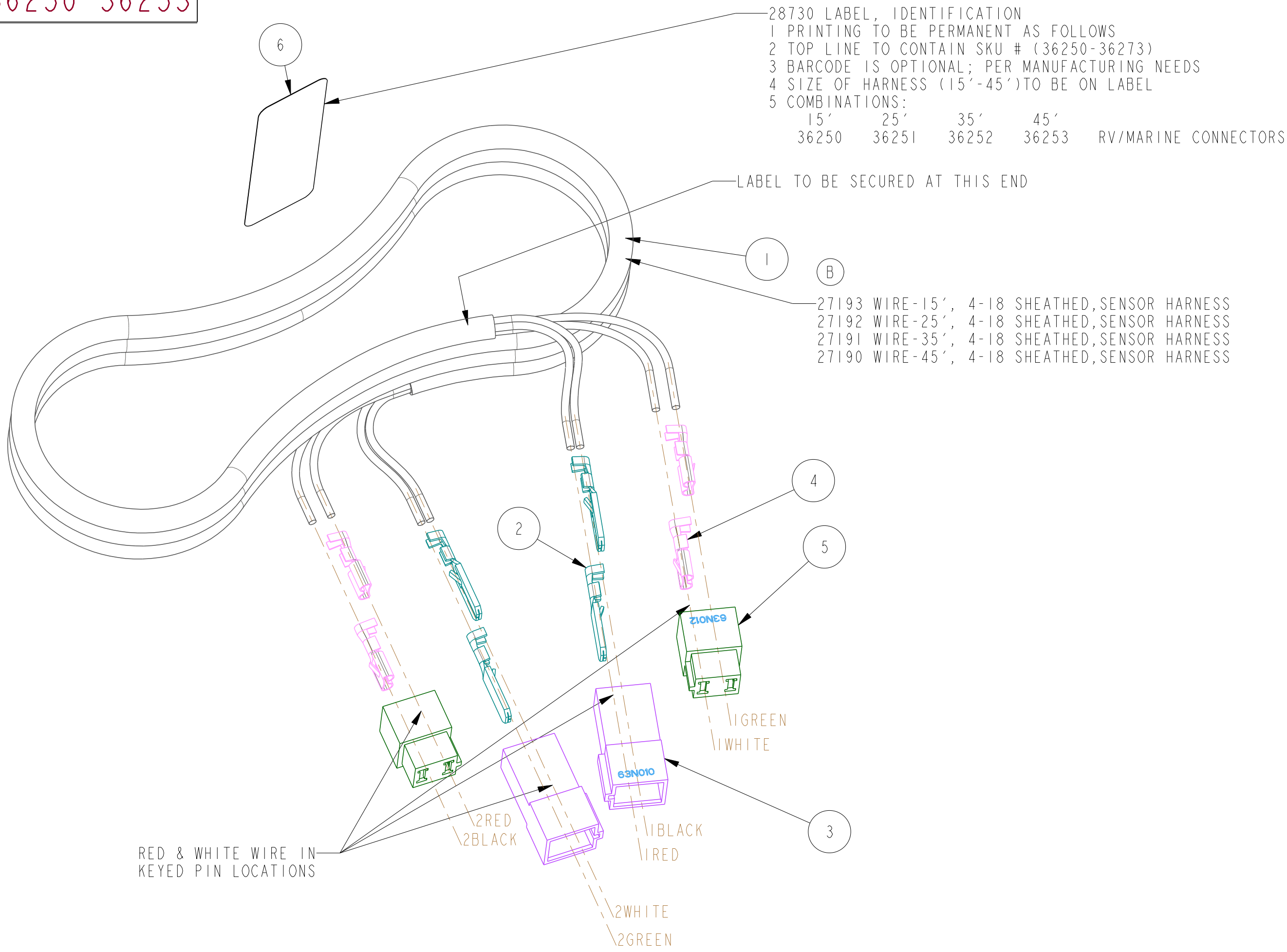


The Red labeled sensor is set at the highest point on the tank for the tank's capacity, or where the installer wants the Tank Full indication to be;  
The Yellow labeled sensor is set at a mid-point in the tank's capacity



The sensors have a removable cover over each pressure-sensitive adhesive pad. The area for adhesion should be thoroughly cleaned prior to mounting with isopropyl alcohol or equivalent



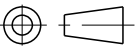
PART NUMBER  
36250-36253



|  |       |         |  |     |
|--|-------|---------|--|-----|
| 6  | I     | 28730   | LABEL, IDENTIFICATION                            | 1   |
| 5  | I     | 27131   | TERMINAL-FEMALE, 6.3MM, 2 POLARIZED; 63N012      | 2   |
| 4  | I     | 27132   | RECEPTACLE, FASTIN-FASTON .250 22-18AWG; 60295-2 | 4   |
| 3  | I     | 27130   | TERMINAL-MALE, 6.3MM, 2 POLARIZED; 63N010        | 2   |
| 2  | I     | 27133   | TAB, FASTIN-FASTON .250, 22-18AWG; 62553-3       | 4   |
| 1  | I     | 27190   | WIRE-45', 4-18 SHEATHED, SENSOR HARNESS          | 1   |
| ID#  | LEVEL | PART NO | DESCRIPTION                                      | QTY |
| 36250-36253<br>TANK SENSOR HARNESS - RV & MARINE<br>NON-WATERPROOF |       |         |  |     |

ASSEMBLY NOTES:  
1 THIS ASSEMBLY SHIPS IN A BAG  
2 COIL WIRE & TWIST TIE  
3 APPLY PRINTED LABEL PER SPEC TO HARNESS  
4 BAG TO BE ID WITH SKU LABEL

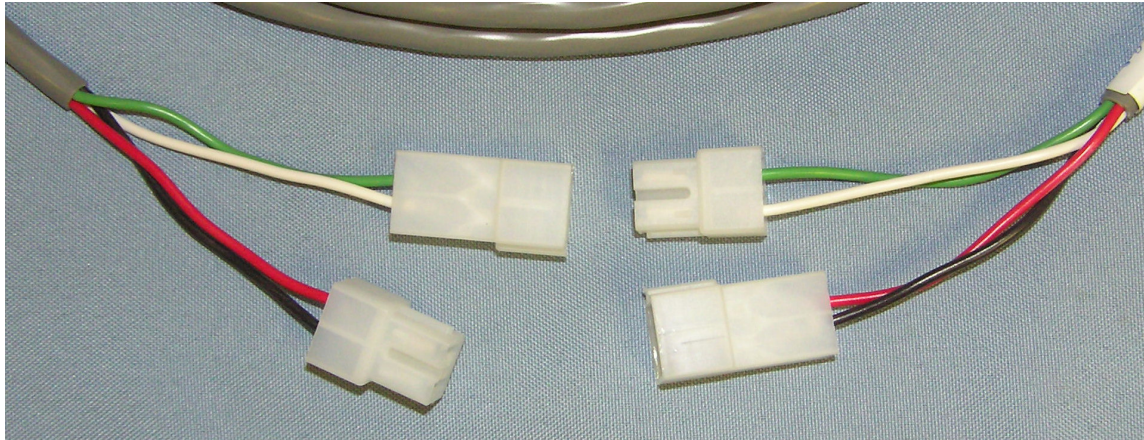
DO NOT SCALE

|  |   |                 |           |            |               |   |
|--|---|-----------------|-----------|------------|---------------|---|
| THIS DRAWING IS THE<br>CONFIDENTIAL AND<br>EXCLUSIVE PROPERTY OF<br>THETFORD CORPORATION<br>AND MAY NOT BE COPIED,<br>DUPLICATED OR USED<br>FOR ANY PURPOSE NOT<br>AUTHORIZED BY<br>THETFORD CORPORATION | C   | MATCH PT#-NAMES | 11744     | CEH        | -             | 9FEB06  |
|  | CHANGE<br>LETTER  | WAS             | AUTHORITY | MADE<br>BY | CHECKED<br>BY | DATE  |
|  |  |                 |           |            |               |  |
|  | DRAWING DATE  | SCALE           | DRAWN BY  | CHECKED BY |               |   |
|  | 18-JAN-06   | 1.000           | C E HALL  | -          |               |   |
| PER ASME Y14.5M-1994   | MATERIAL  |                 |           |            |               | SEE PART DETAILS  |
| THIRD ANGLE PROJECTION   | PART NAME   |                 |           |            |               |   |
|   | HARNESS, SENSOR   |                 |           |            |               |   |
| DIMENSIONS IN MILLIMETERS  | PART NUMBER   |                 |           |            |               |   |
| SHEET 1 OF 1   | DATA TRANSFER   | PART NUMBER     |           |            |               |   |
|  | -   | 36250 - 36253   |           |            |               |   |

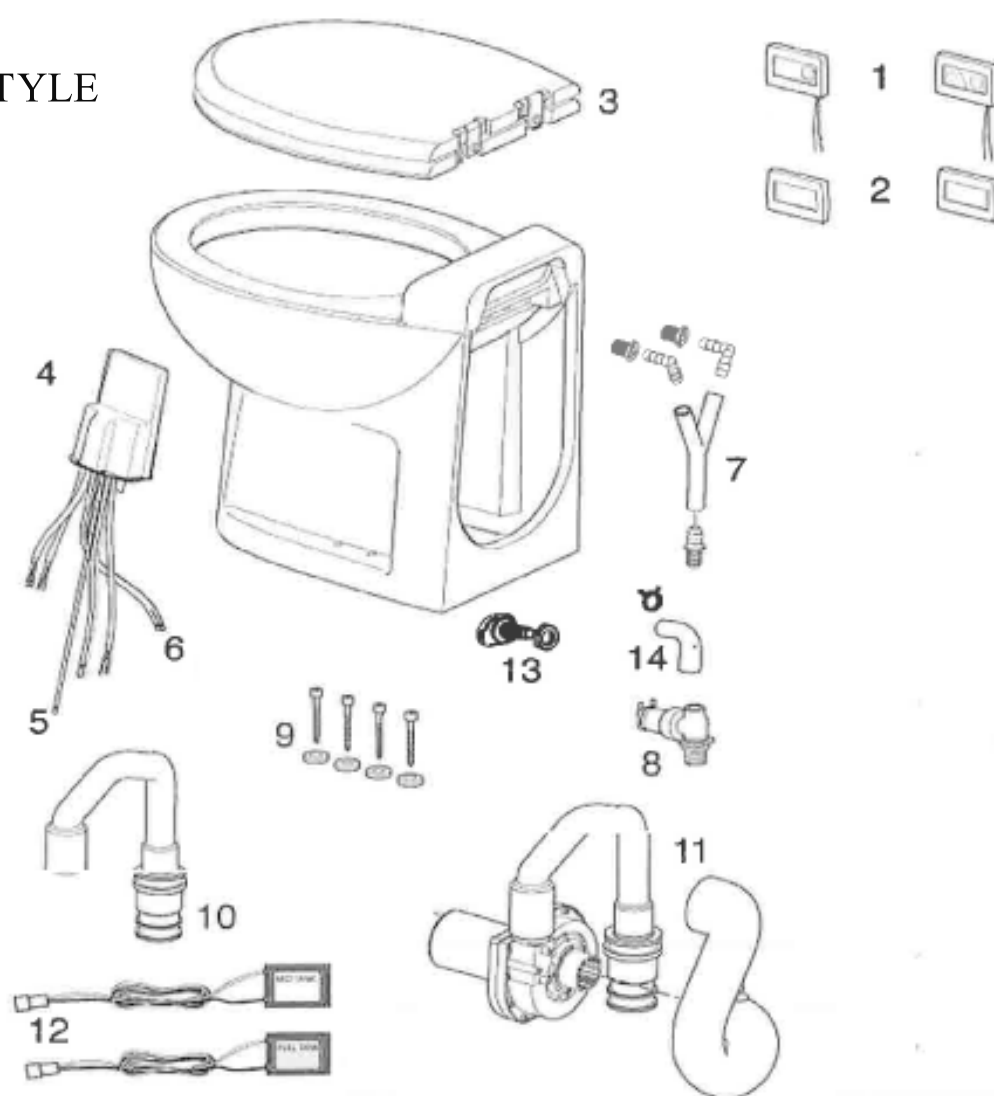


## Thetford Tecma Tank Sensors and Harness Connections

5/4/2006



## OLD STYLE



## PARTS LIST

| Key No. | Part No. | Description   |
|---------|----------|---|
| 1       | 36082    | Control Panel — Single Switch<br>(Pre April 2006)               |
|         | 36387    | Control Panel — 2 Button Wall Switch<br>(April 2006 to Present) |
| 2       | 36185    | Wall Switch Bezel — Black<br>(Pre April 2006)                   |
|         | 36186    | Wall Switch Bezel — Bone<br>(Pre April 2006)                    |
|         | 36396    | Wall Switch Bezel — Bone<br>(April 2006 to Present)             |
|         | 36397    | Wall Switch Bezel — Black<br>(April 2006 to Present)            |
| 3       | 36504    | Seat & Cover — White (Chrome Hinges)                            |
|         | 36503    | Seat & Cover — Bone (Chrome Hinges)                             |
|         | 36134    | Seat & Cover — Bone (Gold Hinges)                               |
|         | 36133    | Seat & Cover — Black (Gold Hinges)                              |
|         | 36132    | Seat & Cover — Black (Chrome Hinges)                            |
|         | 36176    | Seat & Cover — White (Gold Hinges)                              |
| 4       | 36398    | Controller (April 2006 to Present)                              |
| 5       | 36512    | 5' Power Pigtail (April 2006 to Present)                        |
| 6       | 36399    | 6' Pigtail (April 2006 to Present)                              |
| 7       | 36200    | Flush Water Inlet Service Kit (non-Flush Nozzle models)         |
| 8       | 36064    | Solenoid Valve  |
| 9       | 36066    | Hex Head Closet Bolts — White (4)                               |
|         | 36067    | Hex Head Closet Bolts — Bone (4)                                |
| 10      | 36061    | Discharge Pipe (1-1/2" Connection)                              |
| 11      | 36056    | Pump/Motor with Discharge Pipe — 12V                            |
|         | 36058    | Pump/Motor with Discharge Pipe — 24V (marine only)              |
| 12      | 36743    | Holding Tank Sensors<br>(April 2006 to Present)                 |
| 13      | 36746    | Nozzle Kit — White  |
|         | 36747    | Nozzle Kit — Bone   |
|         | 36663    | Nozzle Kit — Black  |
| 14      | 36661    | Short Inlet Tube Kit  |

## NOT SHOWN

| Key No. | Part No. | Description                      |
|---------|----------|----------------------------------|
|         | 36251    | 25' Wire Harness for Tank Sensor |
|         | 36252    | 35' Wire Harness for Tank Sensor |
|         | 36253    | 45' Wire Harness for Tank Sensor |
|         |          | Back to diagram                  |