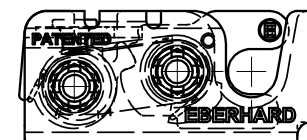
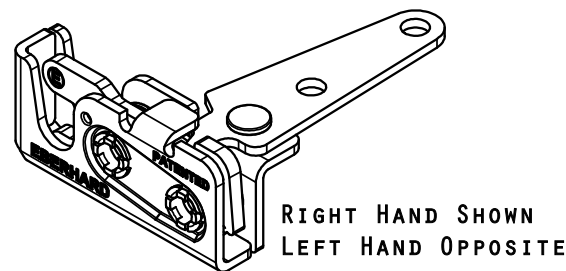
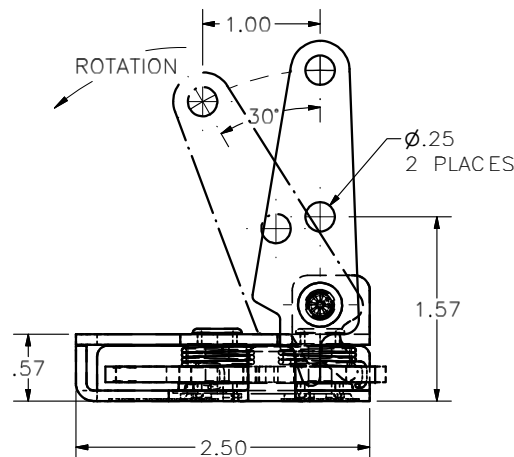
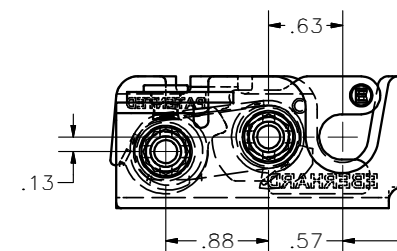
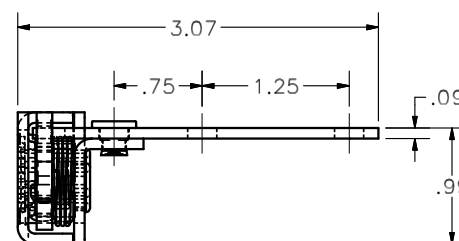
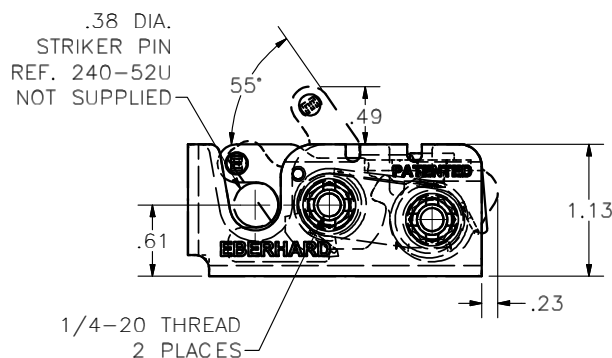


CONFIDENTIAL NOTICE: This drawing and the designs, specifications and engineering information disclosed herein are the property of Eberhard Manufacturing Company and are not to be disseminated or reproduced without express written consent. The drawing is loaned in confidence and then only for consideration of the matter disclosed herein. In accepting loan of this drawing, recipient agrees to keep it and the matter disclosed herein in confidence and not to use nor permit their use in any way detrimental to Eberhard Manufacturing Company, Division of the Eastern Company, 21944 Drake Road, Cleveland, Ohio 44149-9712. © 2012 EBERHARD MFG. CO.

REVISION HISTORY			
REV	DESCRIPTION	EN	DATE
1	REVISED, REDRAWN AND CONVERTED TO 3D	5577	10-26-12



67-240-L
LEFT HAND
MINI-ROTARY™ LOCK



- NOTES:
- USE 1/4-20 GRADE 8 BOLTS FOR INSTALLATION.
RECOMMENDED TORQUE FOR TIGHTENING: 14 FT./LBS.
 - MAX. LOAD RATING: 750 LBS.
 - FINISHES:
 - EVERLUBE INTERNAL COMPONENTS, FC (54)
 - BEARING GREASE WITH EVERLUBE INTERNAL COMPONENTS, FC (BG)
 - TO ORDER 50 PCS TO BOX ADD "BX" TO P/N
AS SHOWN: 67-240-BXR/L-BG

WARNING

THIS PRODUCT MUST NOT BE USED FOR
PERSONAL RESTRAINT APPLICATIONS

MINI-ROTARY™ IS A TRADEMARK OF EBERHARD MFG. CO.,
DIVISION OF THE EASTERN COMPANY.

SUPERSEDES DRAWING 67-240-RL SH1 DATED 7-3-06.

THIS DOCUMENT IS IN ACCORDANCE WITH ASME Y14.15-2009	
LINEAR MEASURE INCH	DATE 10/26/2012
UNLESS OTHERWISE SPECIFIED TOLERANCES ARE AS FOLLOWS:	DR BY FLP
IN MM	SCALE FULL
ANGLES: ±2° ±2°	CHK BY
2 PLACE DEC.: ±.03 ±.06	
3 PLACE DEC.: ±.015 ±.03	
ALL HOLES: ±.005 ±.13	

EBERHARD MANUFACTURING CO. DIVISION OF THE EASTERN COMPANY CLEVELAND, OHIO 44149-9712	
NAME DUAL STAGE MINI-ROTARY LOCK WITH EXTENDED LEVER ARM	
MATERIAL -----	PART NUMBER 67-240-R/L