

1301 Stahley Drive  
Building #42  
Nappanee, IN 46550

# Newmar Corporation

## Warranty Department

Dealer Svc. 866-290-5371  
Customer Svc. 800-731-8300

### Technical Service Bulletin

Date Issued	Model Year(s) Affected	TSB #
11/12/2015	2007, 2008	432

#### Brand

Bay Star Sport	<input type="checkbox"/>	Ventana	<input type="checkbox"/>	Essex	<input checked="" type="checkbox"/>
Bay Star	<input type="checkbox"/>	Dutch Star	<input checked="" type="checkbox"/>	King Aire	<input type="checkbox"/>
Canyon Star	<input type="checkbox"/>	Mountain Aire	<input checked="" type="checkbox"/>	Other	<input type="checkbox"/>
Ventana LE	<input type="checkbox"/>	London Aire	<input type="checkbox"/>		

#### Description

Spartan Motors USA, Inc. (Spartan) has decided a defect which relates to motor vehicle safety exists in certain incomplete motor home chassis. Newmar Corp. has built on these chassis. The list of specific Newmar affected units is attached. Newmar NHTSA# 15v 654, TC# 2015-467

**Issue:** Tag axle wheel bearings may overheat. Overheating of the tag axle may be detected by distortion or melting of the Stemco cover or ABS lamp illumination. If the wheel bearings overheat, there may be an increased risk of a wheel end fire.

#### Recommended Action

**Correction:** Contact Spartan Motors USA, Inc. Customer Product Support group to schedule an inspection and replace the bearings as needed. See attached service bulletin identified as RSB15-340-002.

**To obtain necessary parts and/or verify recall status, please call 1-800-543-4277 opt 0 providing the VIN number (last 8 digits) and mileage of the unit.**

**If you have technical questions, please call Spartan Chassis Customer Product Support Department at 1-800-393-8861.**

NHTSA# 15v 548

**Please read this bulletin in its entirety prior to beginning any diagnosis or repairs.**

*If further assistance is needed, contact Newmar Service Department @ 1-866-290-5371.*

If you have any questions regarding this T.S.B., please contact a Warranty Service Representative at Newmar Corporation.



WHEN YOU KNOW THE DIFFERENCE

## NEWMAR CORPORATION

NEWMARCORP.COM

Date: October 29, 2015  
Re: Newmar Corporation – Motor Vehicle Recall Notification

---

Subject: Recall Campaign No.: 15V 654

This notice is sent to you as a Newmar Dealer in accordance with the requirements of the National Traffic and Motor Vehicle Safety Act. Newmar Corporation has decided that a defect which relates to motor vehicle safety exists in specific Newmar recreational vehicles.

The National Traffic and Motor Vehicle Safety Act requires that each vehicle which is subject to a recall campaign of this type must be satisfactorily repaired within a reasonable time after the owner has tendered it for repair. A failure to adequately repair within 60 days after tender of a vehicle is prima facie evidence of failure to repair within a reasonable time. If the condition is not properly repaired within a reasonable time, the owners may be entitled to an identical or reasonably equivalent vehicle at no charge or to a refund of the purchase price less a reasonable allowance for depreciation.

To avoid providing these problematic solutions, every effort must be made to promptly schedule an appointment with each owner and to repair their vehicle as soon as possible. Vehicle owners are being notified of this recall and are instructed to contact Newmar Corporation if you do not remedy the condition within five days of the mutually agreed upon service date. If the condition is not remedied within a reasonable time, they are instructed on how to contact the National Highway Traffic Safety Administration.

### **REASON FOR THIS RECALL**

*Newmar Corporation has decided that a defect which relates to motor vehicle safety exists in specific motor homes.*

On certain vehicles, a defect in the tag axle could cause the wheel bearings to overheat, potentially resulting in wheel bearing failure. Bearing overheating could be detected through the illumination of the ABS warning light, or melting and/or deformation of the axle bearing cover. Wheel bearing failure could affect vehicle handling, increasing the risk of a crash and/or damage to property or the wheel bearings could overheat increasing the risk of a wheel end fire. Correction: Dealers will inspect wheel bearings and adjust/replace as necessary.

This recall applies to certain Newmar motorhomes built between 10/12/2006 and 7/24/2007.

**These motor homes require immediate service. Continued use poses a potential safety hazard.**

### **DEALER CAMPAIGN RESPONSIBILITY**

***Dealers are to provide to all customers/owner vehicles the service of completing this campaign at no charge to the customer/owner regardless of vehicle age, vehicle mileage, or ownership at the time of repair.***

**REPAIR PROCEDURE**

Please reference Spartan Motors, Inc. work instructions enclosed.

**If you should have any questions please contact the Newmar service department at: 1-866-290-5371.**

Thank you for your cooperation.

Sincerely,

Newmar Corporation



WHEN YOU KNOW THE DIFFERENCE

## NEWMAR CORPORATION

NEWMARCORP.COM

Date: October 15, 2015  
Re: Newmar Corporation – Motor Vehicle Recall Notification

---

Subject: Recall Campaign No.: # 2015-467

This notice is sent to you as a Newmar Dealer in accordance with the requirements of the Canada Motor Vehicle Safety Act. Newmar Corporation has decided that a defect which relates to motor vehicle safety exists in specific Newmar recreational vehicles.

Each vehicle which is subject to a recall campaign of this type must be satisfactorily repaired within a reasonable time after the owner has tendered it for repair. A failure to adequately repair within 60 days after tender of a vehicle is prima facie evidence of failure to repair within a reasonable time. If the condition is not properly repaired within a reasonable time, the owners may be entitled to an identical or reasonably equivalent vehicle at no charge or to a refund of the purchase price less a reasonable allowance for depreciation.

To avoid providing these problematic solutions, every effort must be made to promptly schedule an appointment with each owner and to repair their vehicle as soon as possible. Vehicle owners are being notified of this recall and are instructed to contact Newmar Corporation if you do not remedy the condition within five days of the mutually agreed upon service date.

### **REASON FOR THIS RECALL**

*Newmar Corporation has decided that a defect which relates to motor vehicle safety exists in specific motor homes.*

On certain vehicles, a defect in the tag axle could cause the wheel bearings to overheat, potentially resulting in wheel bearing failure. Bearing overheating could be detected through the illumination of the ABS warning light, or melting and/or deformation of the axle bearing cover. Wheel bearing failure could affect vehicle handling, increasing the risk of injury and/or damage to property. Correction: Dealers will inspect wheel bearings and adjust/replace as necessary.

**These motor homes require immediate service. Continued use poses a potential safety hazard.**

This recall applies to certain Newmar motorhomes built between 10/3/2006 and 6/19/2007.

### **DEALER CAMPAIGN RESPONSIBILITY**

***Dealers are to provide to all customers/owner vehicles the service of completing this campaign at no charge to the customer/owner regardless of vehicle age, vehicle mileage, or ownership at the time of repair.***

**REPAIR PROCEDURE**

Please reference Spartan Motors, Inc. work instructions enclosed.

**If you should have any questions please contact the Newmar service department at: 1-866-290-5371.**

Thank you for your cooperation.

Sincerely,

Newmar Corporation



## Recall Service Bulletin



**DATE:** 10-6-15

**APPLIES TO:**

This service bulletin applies to certain MM and K2 model incomplete motorhome chassis equipped with tag axle supplied by Hendrickson built between March 17, 2006 and June 25, 2007.

**NHTSA/TC Id:**

15V-548

**CONDITION:**

Tag axle wheel bearings may have been installed too tight.

**CORRECTION:**

Replace wheel bearings.

**LABOR ALLOCATION:**

3.0 hrs.

**CLASSIFICATION:**

V3

**TOOLS REQUIRED:**

**Service center must be equipped with:**

- Stemco universal tool # 555-0001
- Stemco universal tool adaptor # 555-5039
- Calibrated dial indicator measurement device
- Calibrated torque tools with 10 – 500 lbs.-ft. capability
- Socket sizes 3 1/4" – 3 7/8" for inner and outer spindle nuts

**PARTS NEEDED:**

<u>QTY</u>	<u>Part Number</u>	<u>Description</u>
1	S-1820-001D	Kit-Tag Axle Bearing N-Series, Timken 454
14 fl. oz.	Premium SAE 80W-90	API Service GL-5, API MT-1

**Kit # S-1820-001D Contains:**

<u>QTY</u>	<u>Part Number</u>	<u>Description</u>
1	R-008953	Vendor Kit-Tag Axle Bearing
1	RSB15-340-002	Instruction Document

**Parts included in Vendor Kit: R-008953 (S-1820-001D)**

<u>QTY</u>	<u>Part Number</u>	<u>Description</u>
2	008441-6	Inner Bearings
2	008441-3	Outer Bearings
2	A-11571	Wheel Seals
2	004797	Wheel Nut Assembly
2	003520	Hub Caps

Service Bulletins are intended for use by Professional Technicians only. They are written to guide Professional Technicians in performing service to vehicles of specific nature in conjunction with industry standards. Professional Technicians are appropriately trained on industry standards and have the tools and equipment to perform procedures safely and properly.



## Recall Service Bulletin

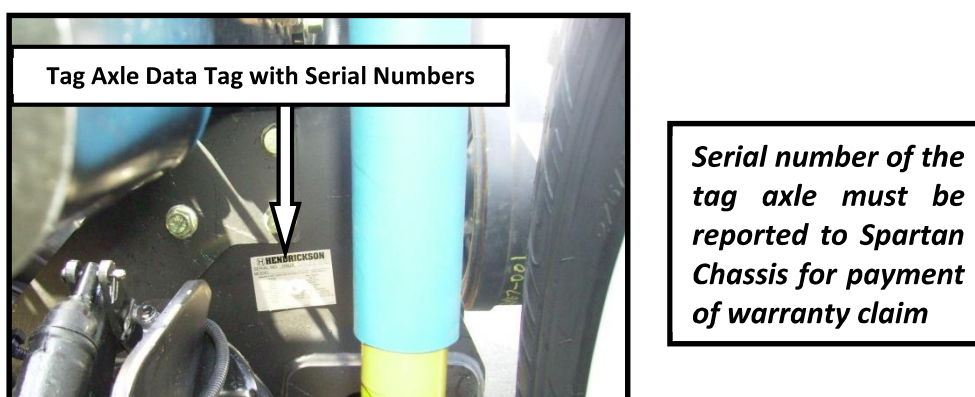


2	A-1973	Hub Cap Gaskets
12	SA-1100-4	Hub Cap Bolts
12	SA-1600-7	Lock Washers

### GENERAL INSTRUCTIONS:

Thoroughly review entire service bulletin before starting work. If there are questions or concerns with steps defined in this service bulletin, contact Spartan Motors USA, Inc. Customer & Product Support Group.

All applicable industry safety standards must be followed when performing work identified in this procedure.



**TAG AXLE DATA TAG LOCATION**

**FIG. 2-1**

### STEP-BY-STEP INSTRUCTIONS:

1. Secure vehicle to allow for replacement of tag axle bearings.
2. Raise tag axle and place jack stands under tag axle.
3. Remove wheel dressing retaining for reuse.
4. Remove wheel assembly retaining lug nuts for reuse.
5. Place drain pan under hub.
6. Remove brake drum and hub, retaining drum wheel hub for reuse, dispose of hub cap properly.

### **CAUTION**

**Do not cut ring with chisel or sharp object**

Service Bulletins are intended for use by Professional Technicians only. They are written to guide Professional Technicians in performing service to vehicles of specific nature in conjunction with industry standards. Professional Technicians are appropriately trained on industry standards and have the tools and equipment to perform procedures safely and properly.



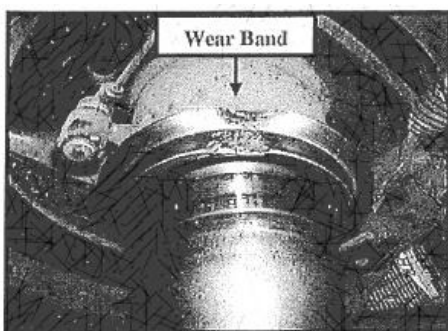
## Recall Service Bulletin



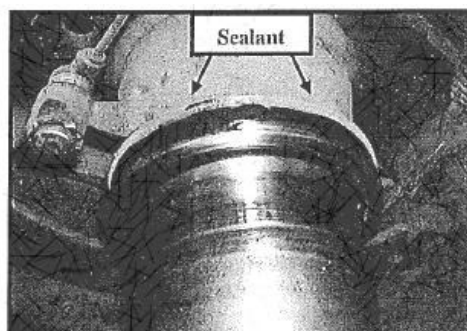
7. Refer to FIG. 3-1. Using a ball peen hammer bend deflector ring back and strike wear band with ball peen hammer to expand ring and remove by hand.
8. Remove bearings and wheel seal. Dispose of bearings and wheel seal properly.
9. Clean spindle and hub bore. Remove all burrs from spindle and hub bore using emery cloth. Wipe all parts clean with brake cleaner or equivalent. Lubricate wheel bearing with clean lubricant of the same type to be used in hub assembly.
10. Refer to FIG. 3-2. Apply a thin layer of Permatex No. 2 non hardening sealant to the O.D. (Outside Diameter) of axle shoulder.



**Do not install seal in hub bore.**



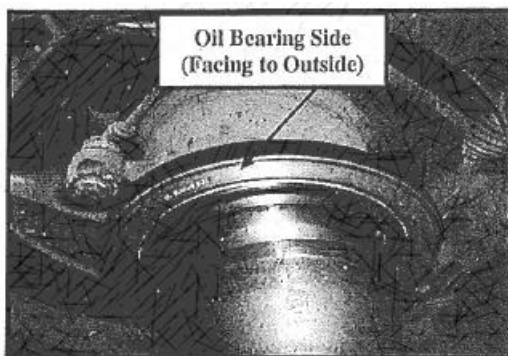
**WEAR BAND**  
**FIG. 3-1**



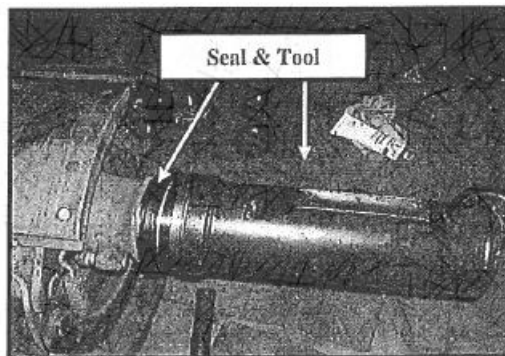
**SPENDLE WITH SEALANT APPLIED**  
**FIG. 3-2**

11. Refer to FIG. 3-3 & 3-4. Install new wheel seal on spindle shoulder with the words "oil bearing side" facing to the outside. Using the proper installation tools (# 555-0001 & #555-5039) drive seal and ring assembly until tool bottoms out.

**NOTE: Ensure ring is flush to shoulder and wipe away any excess sealant.**



**SEAL POSITION**  
**FIG. 3-3**



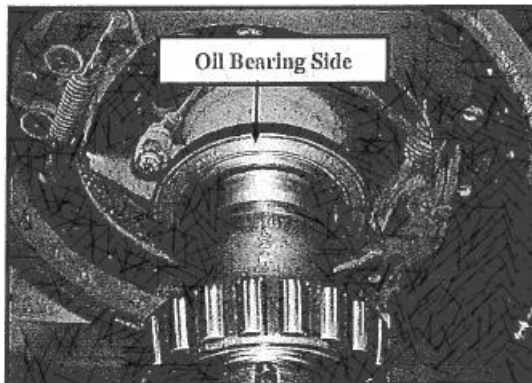
**SEAL INSTALLATION TOOLS**  
**FIG. 3-4**

Service Bulletins are intended for use by Professional Technicians only. They are written to guide Professional Technicians in performing service to vehicles of specific nature in conjunction with industry standards. Professional Technicians are appropriately trained on industry standards and have the tools and equipment to perform procedures safely and properly.

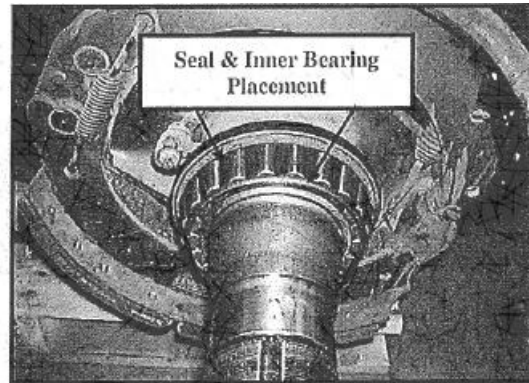




## Recall Service Bulletin



**PROPER SEAL POSITION**  
**FIG. 4-1**



**PROPER BEARING POSITION**  
**FIG. 4-2**

12. Before installing inner bearing, lube bearing using Premium SAE 80W90 hub oil.



**Seal, ring, and inner bearing must be installed on spindle.**

13. Refer to FIG. 4-2. Install inner bearing on spindle.
14. Install hub on spindle.
15. Install outer bearing on spindle.
16. Install inner spindle nut on spindle.
17. Using a torque wrench. Tighten adjusting nut to a torque of 200 lbs. ft. hub should be rotated while tightening.
18. Back inner nut off one full turn.
19. Tighten inner nut to a torque of 50 lbs. ft. while rotating hub.
20. Back nut off 1/4 turn.
21. Refer to FIG. 6-1. Install lock rings, star, and torque jam nut to 200-400 lbs. ft. Confirm end play is between 0.002" and 0.005" as measured with a dial indicator.

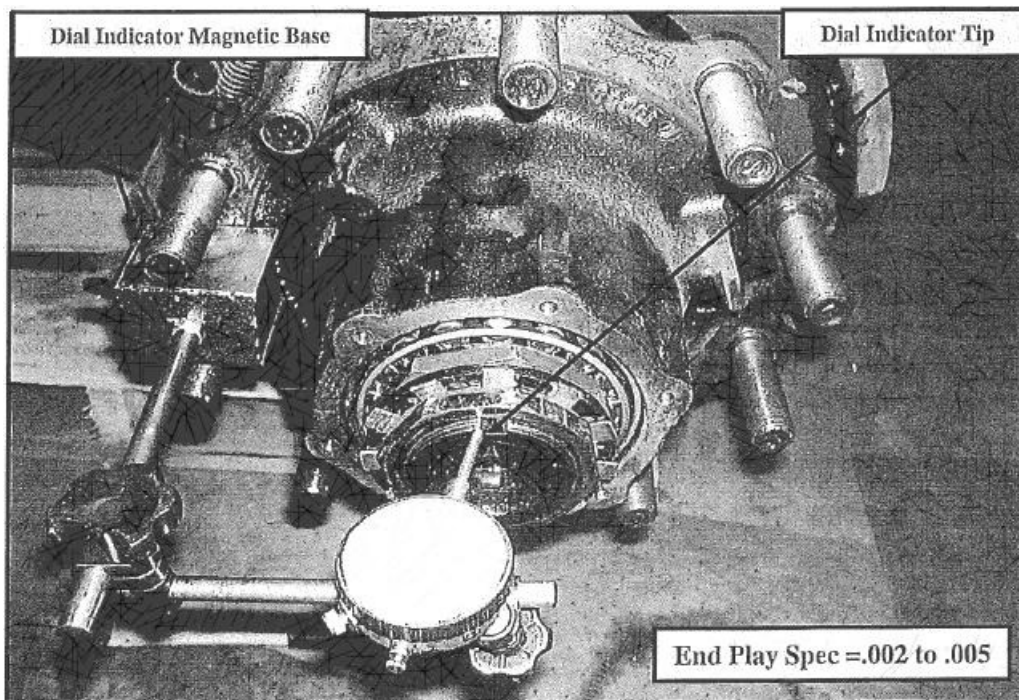
### **CAUTION**

**Failure to set end play between 0.002"-0.005" could result in premature bearing failure.**

Service Bulletins are intended for use by Professional Technicians only. They are written to guide Professional Technicians in performing service to vehicles of specific nature in conjunction with industry standards. Professional Technicians are appropriately trained on industry standards and have the tools and equipment to perform procedures safely and properly.



## Recall Service Bulletin



**DIAL INDICATOR SET UP**

**FIG. 5-1**

### **HOW TO MEASURE END PLAY**

22. Refer to FIG. 5-1. Using a magnetic base, mount dial indicator on spindle end, making sure hub face is clean and free of gasket material.
23. Refer to FIG. 5-1. Adjust the arm of the dial indicator, setting plunger tip of indicator on machined face of hub at 12 o'clock position. The plunger should be set-up so that it is parallel to the axis of the spindle. When positioning the indicator tip, ensure that the indicator has adequate range of travel for proper measurement. Set indicator to zero.
24. Grasp wheel/hub assembly at 3 o'clock and 9 o'clock positions. Pull wheel end assembly outward while oscillating wheel approximately 45°. While continuing to pull, stop oscillating and read indicator.
25. Push wheel assembly inward while oscillating. While continuing to push stop oscillating and read indicator.
26. Read bearing end play as total indicator movement.
27. Bend 2 (two) retaining star washers tabs.

Service Bulletins are intended for use by Professional Technicians only. They are written to guide Professional Technicians in performing service to vehicles of specific nature in conjunction with industry standards. Professional Technicians are appropriately trained on industry standards and have the tools and equipment to perform procedures safely and properly.



## Recall Service Bulletin



28. Install new hub cover gasket and hub cover. Torque to 12-16 lbs. ft.
29. Fill hub to appropriate level (approximately 14 fl. oz.) using Premium SAE 80W90 hub oil.
30. Let hub oil settle, perform 2 (two) additional fills letting each settle to ensure proper fill.
31. Reinstall brake drum and wheel/tire assembly.
32. Adjust brakes and check for proper free play and applied stroke.
33. Torque lug nuts to 450-500 lbs. ft.
34. Reinstall wheel dressings.
35. Repeat steps 3 through 34 for opposite side.

**NOTE: Refer to FIG. 2-1. To be paid for claim you must report tag axle number to Spartan Motors USA, Inc. Customer and Product Support.**

**NOTE: If end play is not within specifications, readjustment is required.**

### **CAUTION**

**Failure to set end play between 0.002"-0.005" could result in premature bearing failure.**

Service Bulletins are intended for use by Professional Technicians only. They are written to guide Professional Technicians in performing service to vehicles of specific nature in conjunction with industry standards. Professional Technicians are appropriately trained on industry standards and have the tools and equipment to perform procedures safely and properly.

VIN Number	Production Number	Model Year	Brand	Type	Floor Plan	Chassis Brand	Date In Production	Date Off Production
4VZAT1C9X7C058362	903595	2007	MA	DP	4528	S	10/18/2006	10/30/2006
4VZAT1C9X7C058894	903624	2007	MA	DP	4523	S	11/22/2006	12/5/2006
4VZAT1C9X7C060239	903693	2007	MA	DP	4521	S	3/12/2007	3/21/2007
4VZAT1C907C058323	903597	2007	MA	DP	4523	S	10/16/2006	10/24/2006
4VZAT1C908C061059	903724	2008	MA	DP	4529	S	4/30/2007	5/8/2007
4VZAT1C917C059318	903657	2007	MA	DP	4522	S	1/22/2007	1/31/2007
4VZAT1C917C059402	903656	2007	MA	DP	4528	S	1/31/2007	2/13/2007
4VZAT1C917C059562	903680	2007	MA	DP	4528	S	2/12/2007	2/21/2007
4VZAT1C918C057635	903666	2008	MA	DP	4523	S	1/25/2007	2/6/2007
4VZAT1C918C060969	903713	2008	MA	DP	4529	S	4/25/2007	5/4/2007
4VZAT1C918C061250	903727	2008	MA	DP	4523	S	5/7/2007	5/15/2007
4VZAT1C927C059831	903692	2007	MA	DP	4523	S	3/5/2007	3/14/2007
4VZAT1C928C060897	903709	2008	MA	DP	4523	S	4/4/2007	4/12/2007
4VZAT1C937C059014	903623	2007	MA	DP	4528	S	12/4/2006	12/14/2006
4VZAT1C937C059451	903671	2007	MA	DP	4523	S	2/1/2007	2/13/2007
4VZAT1C938C061251	903735	2008	MA	DP	4528	S	5/8/2007	5/16/2007
4VZAT1C938C061315	903734	2008	MA	DP	4528	S	5/11/2007	5/22/2007
4VZAT1C947C058549	903616	2007	MA	DP	4521	S	11/9/2006	11/21/2006
4VZAT1C947C058552	903615	2007	MA	DP	4521	S	11/13/2006	11/22/2006
4VZAT1C947C058891	903614	2007	MA	DP	4523	S	11/16/2006	11/29/2006
4VZAT1C947C059295	903650	2007	MA	DP	4528	S	12/19/2006	1/16/2007
4VZAT1C947C059300	903661	2007	MA	DP	4523	S	1/23/2007	2/5/2007
4VZAT1C947C059314	903645	2007	MA	DP	4528	S	1/17/2007	1/29/2007
4VZAT1C947C059720	903678	2007	MA	DP	4528	S	2/16/2007	2/27/2007
4VZAT1C947C060334	903707	2007	MA	DP	4528	S	3/19/2007	3/29/2007
4VZAT1C948C057631	903636	2008	MA	DP	4523	S	12/15/2006	1/15/2007
4VZAT1C948C060965	903717	2008	MA	DP	4529	S	4/16/2007	4/25/2007
4VZAT1C957C059158	903632	2007	MA	DP	4523	S	12/13/2006	1/10/2007
4VZAT1C957C059452	903669	2007	MA	DP	4528	S	2/5/2007	2/15/2007
4VZAT1C958C061252	903712	2008	MA	DP	4529	S	5/10/2007	5/21/2007
4VZAT1C967C058892	903622	2007	MA	DP	4528	S	11/21/2006	12/1/2006
4VZAT1C967C059296	903649	2007	MA	DP	4528	S	1/11/2007	1/22/2007
4VZAT1C967C059718	903673	2007	MA	DP	4521	S	2/16/2007	2/26/2007
4VZAT1C967C060237	903698	2007	MA	DP	4528	S	3/7/2007	3/19/2007
4VZAT1C968C057632	903651	2008	MA	DP	4528	S	1/10/2007	1/18/2007
4VZAT1C968C060966	903718	2008	MA	DP	4528	S	4/19/2007	4/30/2007
4VZAT1C977C058951	903626	2007	MA	DP	4523	S	12/1/2006	12/13/2006
4VZAT1C977C059159	903637	2007	MA	DP	4528	S	12/18/2006	1/15/2007
4VZAT1C977C059372	903659	2007	MA	DP	4528	S	1/23/2007	2/1/2007
4VZAT1C977C059825	903686	2007	MA	DP	4528	S	2/20/2007	3/1/2007
4VZAT1C978C060636	903736	2008	MA	DP	4121	S	5/9/2007	5/18/2007
4VZAT1C978C061060	903711	2008	MA	DP	4529	S	4/27/2007	5/7/2007
4VZAT1C987C058439	903599	2007	MA	DP	4121	S	10/24/2006	11/2/2006
4VZAT1C987C058893	903621	2007	MA	DP	4528	S	11/20/2006	11/30/2006
4VZAT1C987C059316	903654	2007	MA	DP	4528	S	1/22/2007	1/31/2007
4VZAT1C987C059400	903665	2007	MA	DP	4528	S	1/29/2007	2/7/2007
4VZAT1C987C059560	903670	2007	MA	DP	4528	S	2/7/2007	2/19/2007
4VZAT1C987C060241	903675	2007	MA	DP	4121	S	3/7/2007	3/20/2007
4VZAT1C987C060336	903663	2007	MA	DP	4121	S	3/15/2007	3/28/2007
4VZAT1C988C057633	903652	2008	MA	DP	4529	S	1/18/2007	1/30/2007
4VZAT1C988C060967	903722	2008	MA	DP	4523	S	4/24/2007	5/2/2007
4VZAT1C988C061147	903723	2008	MA	DP	4523	S	5/3/2007	5/11/2007
4VZAT1C997C059017	903633	2007	MA	DP	4521	S	12/12/2006	1/10/2007
4VZAT1C998C061058	903721	2008	MA	DP	4529	S	4/25/2007	5/4/2007
4VZAT1C998C062534	903755	2008	MA	DP	4529	S	7/13/2007	7/24/2007
4VZAU1C908C060409	800756	2008	EX	DP	4514	S	4/5/2007	4/16/2007
4VZAU1C917C058506	800688	2007	EX	DP	4502	S	11/29/2006	12/7/2006
4VZAU1C928C060461	800769	2008	EX	DP	4502	S	4/19/2007	4/30/2007
4VZAU1C928C060900	800763	2008	EX	DP	4508	S	5/8/2007	5/16/2007
4VZAU1C937C059012	800716	2007	EX	DP	4508	S	1/30/2007	2/8/2007
4VZAU1C938C060629	800758	2008	EX	DP	4502	S	4/25/2007	5/4/2007

VIN Number	Production Number	Model Year	Brand	Type	Floor Plan	Chassis Brand	Date In Production	Date Off Production
4VZAU1C938C060971	800775	2008	EX	DP	4508	S	5/9/2007	5/18/2007
4VZAU1C947C058886	800696	2007	EX	DP	4502	S	12/4/2006	12/14/2006
4VZAU1C947C059293	800731	2007	EX	DP	4508	S	2/8/2007	2/28/2007
4VZAU1C947C059634	800709	2007	EX	DP	4502	S	2/15/2007	2/22/2007
4VZAU1C947C060234	800732	2007	EX	DP	4502	S	3/5/2007	3/19/2007
4VZAU1C948C060834	800751	2008	EX	DP	4502	S	5/2/2007	5/10/2007
4VZAU1C948C061062	800757	2008	EX	DP	4508	S	5/15/2007	5/24/2007
4VZAU1C957C059013	800713	2007	EX	DP	4508	S	1/23/2007	2/1/2007
4VZAU1C957C059156	800717	2007	EX	DP	4510	S	2/19/2007	3/1/2007
4VZAU1C957C059559	800721	2007	EX	DP	4502	S	2/13/2007	2/27/2007
4VZAU1C987C060236	800733	2007	EX	DP	4508	S	3/7/2007	3/19/2007
4VZAU1C987C060351	800754	2007	EX	DP	4508	S	4/30/2007	5/9/2007
4VZAU1C997C058947	800708	2007	EX	DP	4502	S	1/15/2007	1/24/2007
4VZAU1C997C060343	800741	2007	EX	DP	4510	S	3/27/2007	4/5/2007
4VZAU1C998C057640	800706	2008	EX	DP	4514	S	1/11/2007	1/25/2007
4VZAU1C998C060408	800755	2008	EX	DP	4502	S	4/11/2007	4/24/2007
4VZBT1D9X7C058882	603703	2007	DS	DP	4307	S	11/1/2006	11/13/2006
4VZBT1D9X7C059174	603728	2007	DS	DP	4304	S	11/9/2006	11/21/2006
4VZBT1D9X7C059398	603745	2007	DS	DP	4304	S	12/12/2006	1/9/2007
4VZBT1D9X7C059448	603756	2007	DS	DP	4325	S	1/10/2007	1/18/2007
4VZBT1D9X7C060180	603804	2007	DS	DP	4320	S	3/19/2007	3/28/2007
4VZBT1D9X8C060892	603834	2008	DS	DP	4317	S	4/5/2007	4/17/2007
4VZBT1D9X8C060956	603833	2008	DS	DP	4304	S	4/5/2007	4/16/2007
4VZBT1D9X8C061380	603890	2008	DS	DP	4317	S	6/14/2007	6/26/2007
4VZBT1D908C061050	603869	2008	DS	DP	4317	S	5/2/2007	5/10/2007
4VZBT1D917C059175	603661	2007	DS	DP	4324	S	11/13/2006	11/22/2006
4VZBT1D917C059810	603789	2007	DS	DP	4324	S	2/5/2007	2/15/2007
4VZBT1D917C059967	603821	2007	DS	DP	4307	S	3/14/2007	3/26/2007
4VZBT1D918C060957	603851	2008	DS	DP	4320	S	4/9/2007	4/17/2007
4VZBT1D927C059444	603755	2007	DS	DP	4325	S	12/14/2006	1/11/2007
4VZBT1D927C059895	603808	2007	DS	DP	4320	S	2/19/2007	2/28/2007
4VZBT1D928C061180	603871	2008	DS	DP	4304	S	5/10/2007	5/21/2007
4VZBT1D937C058884	603704	2007	DS	DP	4320	S	11/7/2006	11/16/2006
4VZBT1D937C059288	603721	2007	DS	DP	4304	S	11/20/2006	12/1/2006
4VZBT1D938C057655	603779	2008	DS	DP	4320	S	1/30/2007	2/8/2007
4VZBT1D938C061379	603884	2008	DS	DP	4317	S	6/7/2007	6/19/2007
4VZBT1D947C059008	603659	2007	DS	DP	4324	S	11/8/2006	11/20/2006
4VZBT1D947C059364	603738	2007	DS	DP	4304	S	12/5/2006	12/15/2006
4VZBT1D947C059395	603736	2007	DS	DP	4304	S	12/6/2006	12/18/2006
4VZBT1D947C059445	603757	2007	DS	DP	4325	S	1/12/2007	1/23/2007
4VZBT1D947C059557	603772	2007	DS	DP	4323	S	1/18/2007	1/30/2007
4VZBT1D957C058885	603658	2007	DS	DP	4324	S	11/6/2006	11/15/2006
4VZBT1D957C059289	603730	2007	DS	DP	4304	S	11/22/2006	12/4/2006
4VZBT1D957C059311	603709	2007	DS	DP	4325	S	11/28/2006	12/5/2006
4VZBT1D957C059812	603791	2007	DS	DP	4304	S	2/15/2007	2/22/2007
4VZBT1D958C060959	603839	2008	DS	DP	4354	S	4/19/2007	5/1/2007
4VZBT1D958C061142	603860	2008	DS	DP	4320	S	5/3/2007	5/11/2007
4VZBT1D967C059365	603742	2007	DS	DP	4307	S	12/5/2006	12/15/2006
4VZBT1D967C059396	603725	2007	DS	DP	4304	S	12/6/2006	12/19/2006
4VZBT1D967C059446	603754	2007	DS	DP	4325	S	12/14/2006	1/12/2007
4VZBT1D977C059326	603726	2007	DS	DP	4304	S	11/29/2006	12/6/2006
4VZBT1D977C059813	603796	2007	DS	DP	4304	S	2/15/2007	2/26/2007
4VZBT1D977C060508	603840	2007	DS	DP	4304	S	3/27/2007	4/5/2007
4VZBT1D987C058430	603681	2007	DS	DP	4320	S	10/12/2006	10/24/2006
4VZBT1D987C059965	603812	2007	DS	DP	4307	S	3/7/2007	3/19/2007
4VZBT1D997C059313	603724	2007	DS	DP	4320	S	11/28/2006	12/6/2006
4VZBT1D997C059442	603747	2007	DS	DP	4304	S	12/13/2006	1/10/2007
4VZBT1D997C059554	603759	2007	DS	DP	4325	S	1/15/2007	1/24/2007

VIN Number	Production Number	Model Year	Brand	Type	Floor Plan	Chassis Brand	Date In Production	Date Off Production
------------	-------------------	------------	-------	------	------------	---------------	--------------------	---------------------

Canadian Units

VIN Number	Production Number	Model Year	Brand	Type	Floor Plan	Chassis Brand	Date In Production	Date Off Production
4VZAT1C927C058890	903608	2007	MA	DP	4523	S	11/29/2006	12/7/2006
4VZAT1C928C060897	903709	2008	MA	DP	4523	S	4/4/2007	4/12/2007
4VZAT1C947C060012	903695	2007	MA	DP	4523	S	3/6/2007	3/15/2007
4VZAT1C957C059371	903647	2007	MA	DP	4521	S	2/6/2007	3/1/2007
4VZAT1C957C059399	903648	2007	MA	DP	4121	S	1/9/2007	1/17/2007
4VZAT1C957C059824	903697	2007	MA	DP	4522	S	3/1/2007	3/14/2007
4VZAT1C958C061185	903716	2008	MA	DP	4523	S	4/18/2007	4/27/2007
4VZAT1C967C058889	903609	2007	MA	DP	4528	S	11/16/2006	11/30/2006
4VZAT1C967C060335	903705	2007	MA	DP	4528	S	3/20/2007	4/2/2007
4VZAT1C987C059297	903642	2007	MA	DP	4523	S	12/19/2006	1/16/2007
4VZAT1C997C058952	903631	2007	MA	DP	4523	S	12/5/2006	12/15/2006
4VZAU1C927C060345	800723	2007	EX	DP	4502	S	3/30/2007	4/9/2007
4VZAU1C928C060900	800763	2008	EX	DP	4508	S	5/8/2007	5/16/2007
4VZAU1C977C058946	800701	2007	EX	DP	4502	S	12/18/2006	1/15/2007
4VZAU1C997C058320	800671	2007	EX	DP	4103	S	10/3/2006	10/16/2006
4VZBT1D9X8C062528	603883	2008	DS	DP	4304	S	6/6/2007	6/19/2007
4VZBT1D907C059362	603743	2007	DS	DP	4320	S	12/4/2006	12/14/2006
4VZBT1D907C059443	603764	2007	DS	DP	4304	S	1/25/2007	2/6/2007
4VZBT1D907C060320	603825	2007	DS	DP	4304	S	3/21/2007	4/2/2007
4VZBT1D908C061310	603874	2008	DS	DP	4304	S	5/14/2007	5/23/2007
4VZBT1D957C060393	603797	2007	DS	DP	4320	S	2/21/2007	3/5/2007
4VZBT1D967C059558	603774	2007	DS	DP	4304	S	1/24/2007	2/5/2007
4VZBT1D967C059897	603765	2007	DS	DP	4304	S	2/8/2007	2/20/2007
4VZBT1D967C060628	603829	2007	DS	DP	4304	S	3/20/2007	3/29/2007
4VZBT1D968C061179	603854	2008	DS	DP	4320	S	4/24/2007	5/3/2007
4VZBT1D977C059312	603739	2007	DS	DP	4304	S	11/28/2006	12/5/2006
4VZBT1D988C060891	603852	2008	DS	DP	4304	S	4/17/2007	4/26/2007