

1301 STAHLEY DRIVE
BUILDING #42
NAPPANEE, IN 46550

NEWMAR CORPORATION

WARRANTY

DEPARTMENT

Dealer Svc. 866-290-5371
Customer Svc. 800-731-8300

TECHNICAL SERVICE BULLETIN

DATE ISSUED

MODEL YEAR(S) AFFECTED

TSB #

7/11/2018

2018

525

MODEL

Bay Star Sport	<input type="checkbox"/>	Ventana	<input type="checkbox"/>	Essex	<input checked="" type="checkbox"/>
Bay Star	<input type="checkbox"/>	Dutch Star	<input type="checkbox"/>	King Aire	<input checked="" type="checkbox"/>
Canyon Star	<input type="checkbox"/>	Mountain Aire	<input checked="" type="checkbox"/>	New Aire	<input type="checkbox"/>
Ventana LE	<input type="checkbox"/>	London Aire	<input checked="" type="checkbox"/>	Other	<input type="checkbox"/>

DESCRIPTION

Newmar has determined that the Bose 300 sound bar may come loose from the mounting brackets.

Issue: The Bose 300 sound bar may be attached to the mounting bracket with Velcro in lieu of screws.

Affected Units: Refer to the attached population list for specific coach and VIN numbers.

RECOMMENDED ACTION

Correction: Dealers will install screws to secure the sound bar. Follow the attached instructions to complete the process. Please call your Newmar Service Account Manager to obtain parts and authorization.

Parts: Newmar part #: 027639 - M5 x 12mm Phillips Flat Head Screw (Qty: 2)

Flat Rate Code: TSB 525

Labor Time: .3 hr.

Please read this bulletin in its entirety prior to beginning any diagnosis or repairs.

If you have any questions regarding this T.S.B., please contact a Warranty Service Representative at Newmar Corporation.

HOW TO MOUNT A BOSE 300 SOUND BAR

RELEVANT COACHES

Model: Mountain Aire, London Aire, Essex, King Aire

Year(s): 2018

Floorplan: All

ISSUE

The sound bar may have been attached to the mounting bracket with Velcro in lieu of screws. To correct, implement TSB 525 for Bose Sound Bar (Newmar Part # 136891).

ACTION

Follow the service procedure below to correct the condition. The approximate time to complete this repair is three-tenths of an hour (.3).

NECESSARY TOOLS & REPLACEMENT PARTS

Phillips Head Screwdriver

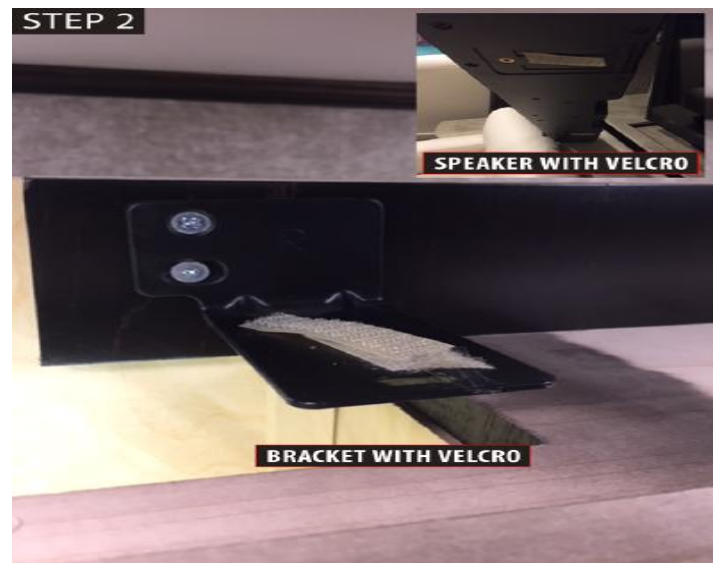
Part Name	Part Quantity	Newmar Part Number
M5 x 12 mm Phillips Flat Head Screw	2 ea.	027639

SERVICE PROCEDURE

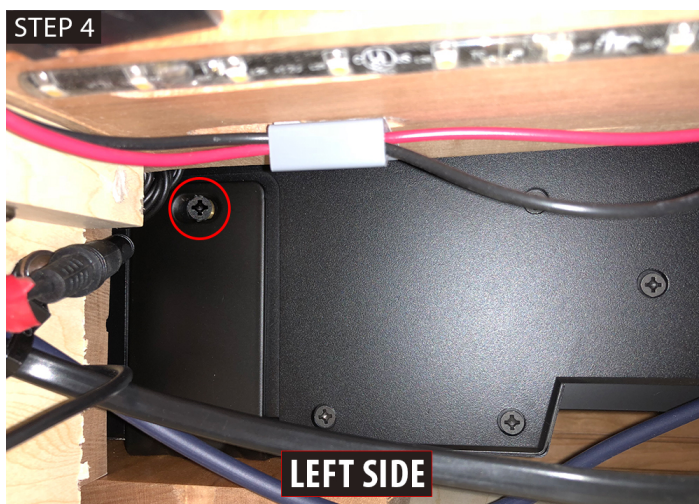
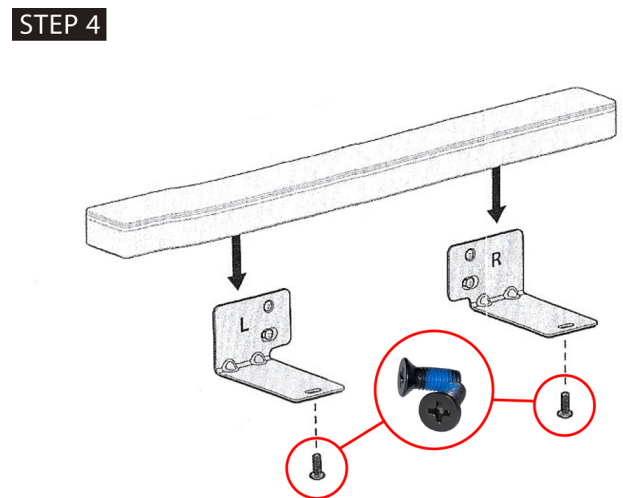
1. Check to see how the speaker is mounted to the bracket. If the speaker is mounted to the bracket with screws, the following procedure does not need to be completed. If the speaker is mounted to the bracket with Velcro, perform the following steps.



2. Remove the Velcro from the bracket and the speaker, and discard it.
3. If necessary, trim the cleat to access the hole in the bracket.



4. Mount the speaker to each bracket with a M5 x 12mm screw with blue Loctite. Start the screws by hand to ensure it is not cross threaded, and then tighten them with a screwdriver.



5. Test the speaker operation to ensure all of the connections are secure after moving the speaker.