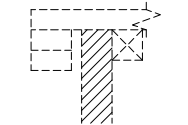
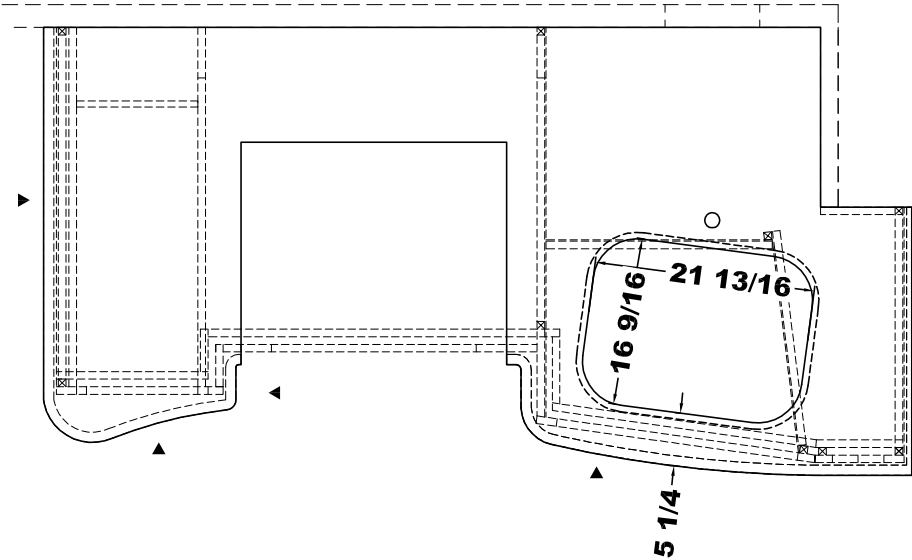


ITEM #	QTY	NEWMAR #	DESCRIPTION
1	1	127487	SINK UNDRMNT SGL 23 1/16x17 13/16
2	1	115816	3 BURNER COOKTOP

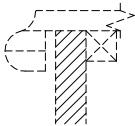
PLEASE ACKNOWLEDGE AND DATE THE FOLLOWING ORDER/PRINT FOR APPROVAL TO BUILD, AND FAX TO NEWMAR (AT 574-773-2895) AS SOON AS POSSIBLE

DATE: _____

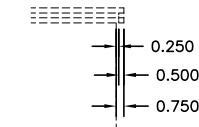
SIGN: _____



ASSEMBLED TOP



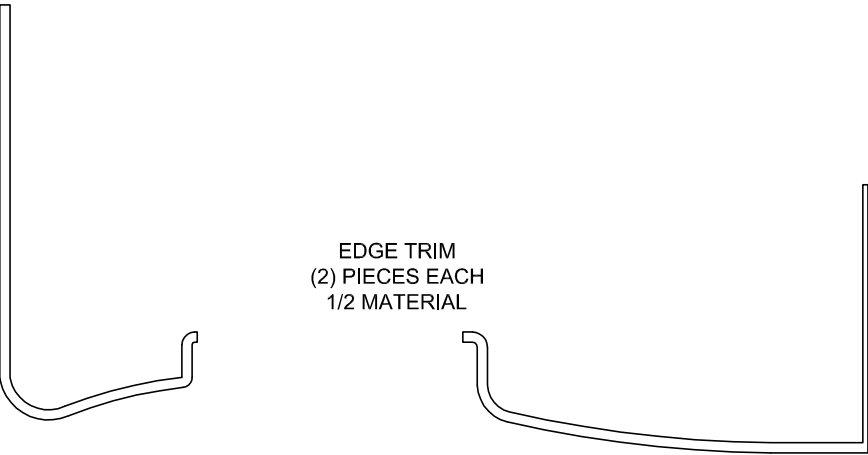
FINISHED TOP



FRONT VIEW

SQUARE OFF BULLNOSE.
USE 1/2 UNDER-HANG ON RETURN EDGE
WITH NO RADIUS. (SEE DETAIL BELOW)

- ◆ - DENOTES A BACKSPLASH
- ▶ - DENOTES A FINISHED EDGE



EDGE TRIM
(2) PIECES EACH
1/2 MATERIAL

UNIT: # 412443
DEALER: Daves RV Center
SPECIAL: # 1044

1/2" THICKNESS
SEE TYPICAL PRINT FOR COUNTERTOP APPLICATION

NEWMAR CORP <i>P.O. Box 30,</i> Nappanee, IN. 46550	Model:	Sheet	Drawn by:	Checked by:	Revision:	By:
	VT DP 4037	1 OF 1	Z. R.	A. M.		Date:
	Title:	I.D. # 2016\	Date:	Date:	Revision:	By:
	78 KIT S-O BASE	SPECIALS\MOT\	10/21/15	10/21/15		Date:
Title block--75TB		1044KT				