

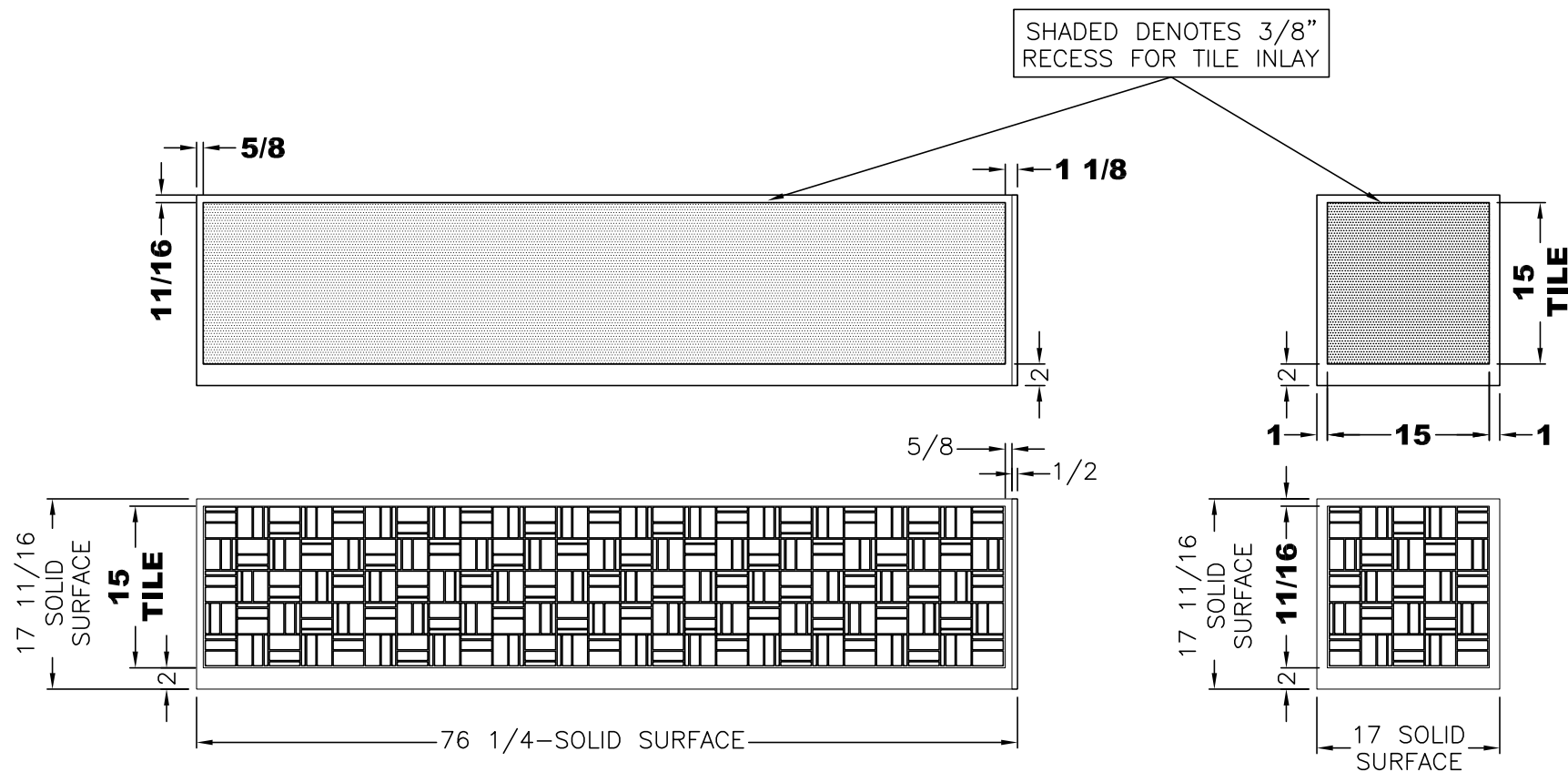
UNIT: # 904500
DEALER: Berryland Campers
SPECIAL: # 915

| | | | | | | | |
|---|-----------------------------|--------------|---------------|-----------|-------------|-----------|-------|
| NEWMAR CORP <i>P.O. Box 30, Nappanee, IN. 46550</i> | Model: | (K035) | Sheet | Drawn by: | Checked by: | Revision: | By: |
| | MA DP 4519 | | 1 OF 1 | Z. R. | A. M. | | Date: |
| | Title: ODS RECLINERS & LAMP | I.D. # 2017\ | SPECIALS\MOT\ | Date: | Date: | Revision: | By: |
| | STAND W/ DS 74" DORMI | 915FP | | 9/19/16 | 9/21/16 | | Date: |

PLEASE ACKNOWLEDGE AND DATE THE
FOLLOWING ORDER/PRINT FOR APPROVAL
TO BUILD, AND FAX TO NEWMAR (AT
574-773-2895) AS SOON AS POSSIBLE
DATE: _____
SIGN: _____

2017 LA DP BATHROOM BACKSPLASH TILE

PLEASE ACKNOWLEDGE AND DATE THE FOLLOWING ORDER/PRINT FOR APPROVAL TO BUILD, AND FAX TO NEWMAR (AT 574-773-2895) AS SOON AS POSSIBLE
DATE: _____
SIGN: _____

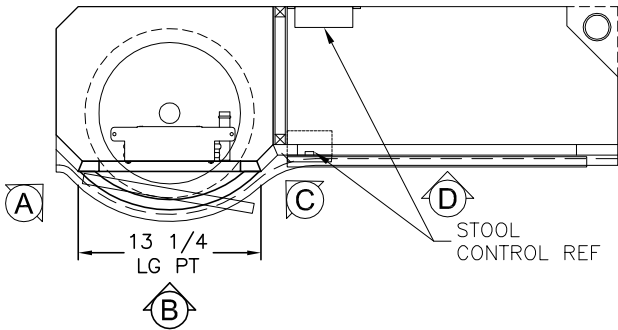


UNIT: # 904500
DEALER: Berryland Campers
SPECIAL: # 915

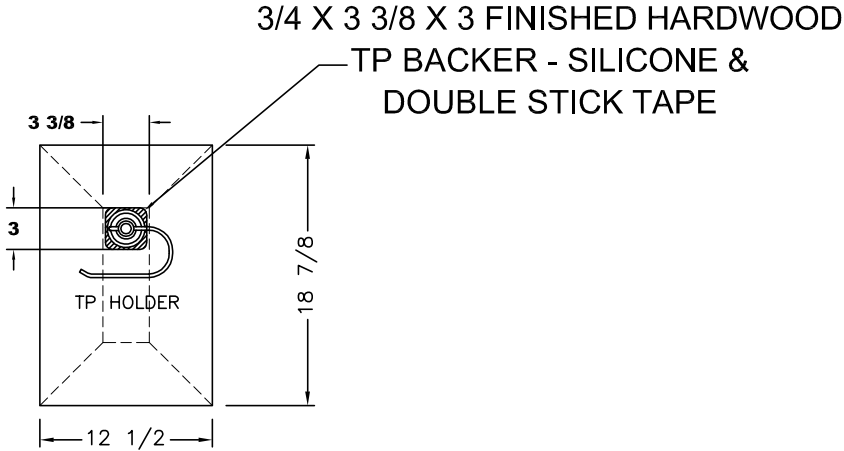
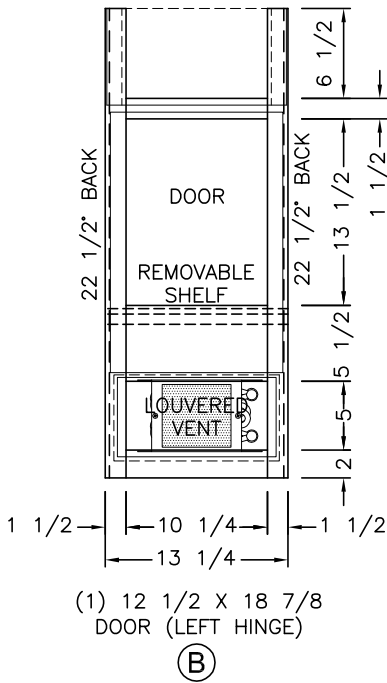
BACK SPLASH

| | | | | | | |
|---|-------------------------|--------------------|-----------|-------------|-----------|-------|
| <div>NEWMAR CORP</div> <div>P.O. Box 30,</div> <div>Nappanee, IN. 46550</div> <div>UNITS: INCHES</div> <div>TITLE BLOCK: 75TB</div> | Model: | Sheet | Drawn by: | Checked by: | Revision: | By: |
| | MA DP 4519 | 1 OF 1 | Z. R. | A. M. | | Date: |
| | Title: | I.D. # 2017\ | Date: | Date: | Revision: | By: |
| | 76 1/2 KITCHEN CABINETS | SPECIALS\MOT\915KT | 9/16/16 | 9/21/16 | | Date: |

PLEASE ACKNOWLEDGE AND DATE THE FOLLOWING ORDER/PRINT FOR APPROVAL TO BUILD, AND FAX TO NEWMAR (AT 574-773-2895) AS SOON AS POSSIBLE
DATE: _____
SIGN: _____



PLAN VIEW



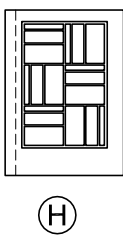
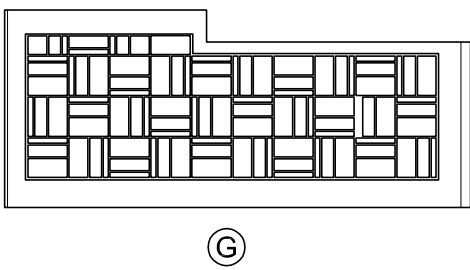
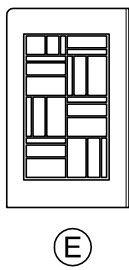
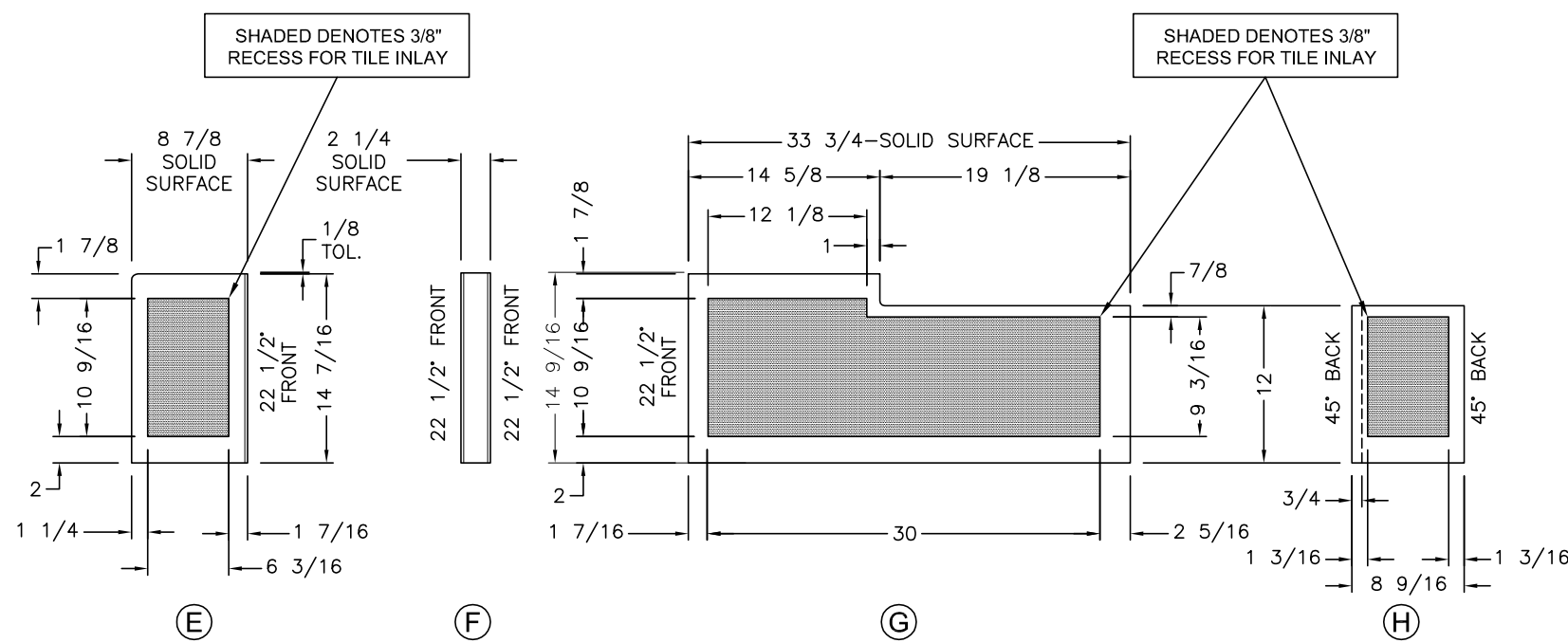
BACK SIDE OF VIEW B DOOR

UNIT: # 904500
DEALER: Berryland Campers
SPECIAL: # 915

| | | | | | | |
|--|---------------------------|--------------------|-----------|-------------|-----------|-------|
| <div>NEWMAR CORP</div> <div>P.O. Box 30,</div> <div>Nappanee, IN. 46550</div> <div>UNITS: INCHES</div> <div>TITLE BLOCK: 1TB</div> | Model: | Sheet | Drawn by: | Checked by: | Revision: | By: |
| | MA DP 4519 | 1 OF 2 | Z. R. | A. M. | | Date: |
| | Title: | I.D. # 2017\ | Date: | Date: | Revision: | By: |
| | STOOL ROOM LAV BASE & TOP | SPECIALS\MOT\915LV | 9/16/16 | 9/21/16 | | Date: |

2017 LA DP BACKSPLASH TILE

PLEASE ACKNOWLEDGE AND DATE THE FOLLOWING ORDER/PRINT FOR APPROVAL TO BUILD, AND FAX TO NEWMAR (AT 574-773-2895) AS SOON AS POSSIBLE
DATE: _____
SIGN: _____



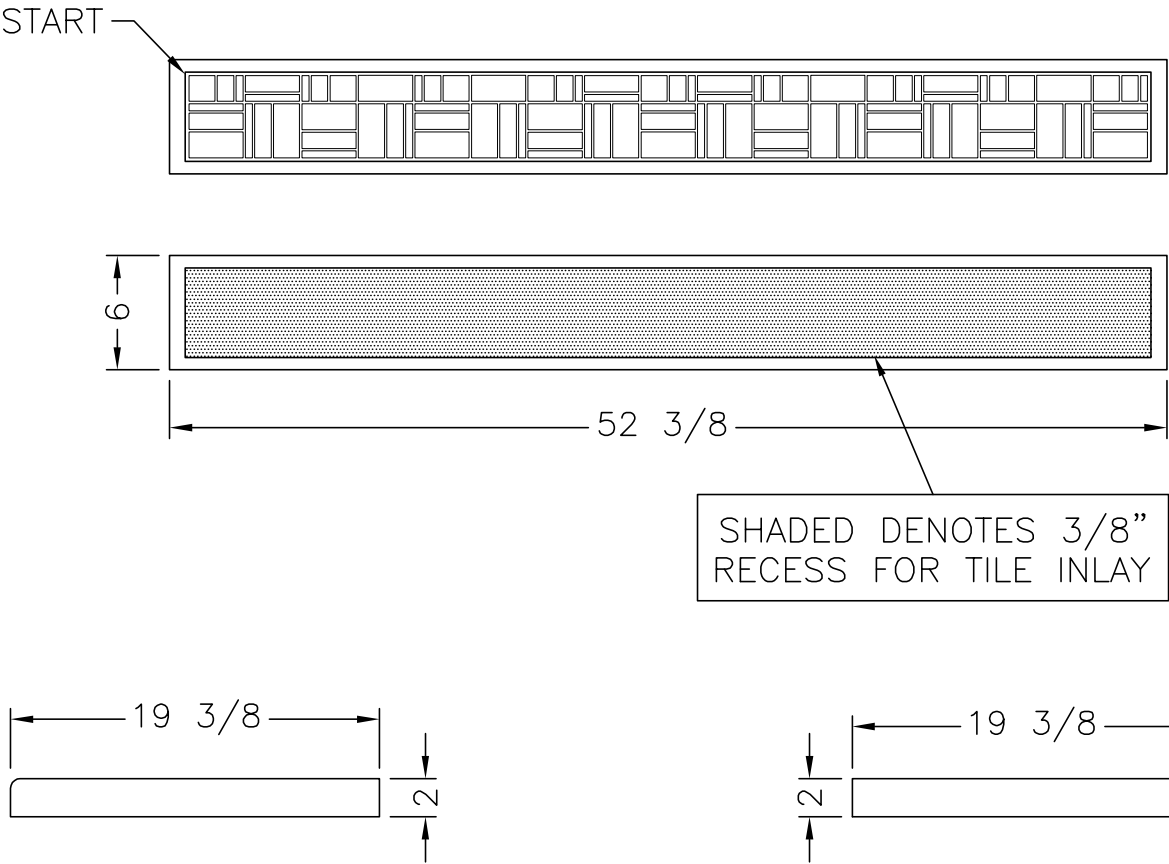
UNIT: # 904500
DEALER: Berryland Campers
SPECIAL: # 915

SPLASHES

| | | | | | | |
|---|---------------------------|--------------------|-----------|-------------|-----------|-------|
| NEWMAR CORP <i>P.O. Box 30, Nappanee, IN. 46550</i> | Model: | Sheet | Drawn by: | Checked by: | Revision: | By: |
| | MA DP 4519 | 2 OF 2 | Z. R. | A. M. | | Date: |
| | Title: | I.D. # 2017\ | Date: | Date: | Revision: | By: |
| | STOOL ROOM LAV BASE & TOP | SPECIALS\MOT\915LV | 9/16/16 | 9/21/16 | | Date: |

2017 LA DP BACKSPLASH TILE

PLEASE ACKNOWLEDGE AND DATE THE FOLLOWING ORDER/PRINT FOR APPROVAL TO BUILD, AND FAX TO NEWMAR (AT 574-773-2895) AS SOON AS POSSIBLE
DATE: _____
SIGN: _____

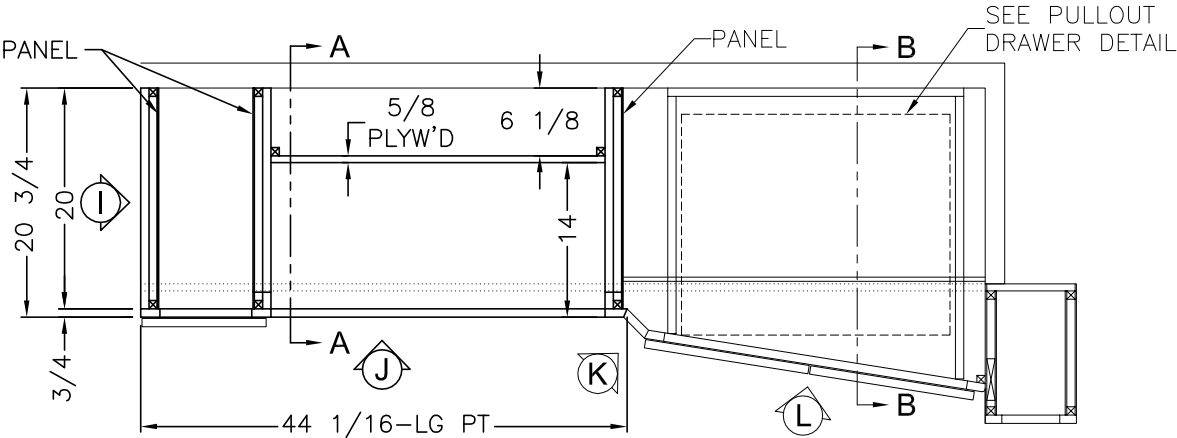


BACKSPLASH

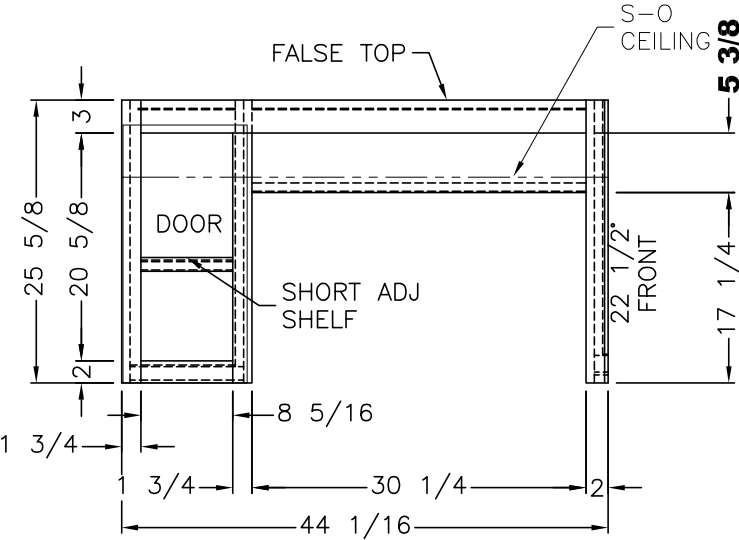
UNIT: # 904500
DEALER: Berryland Campers
SPECIAL: # 915

| | | | | | | |
|--|----------------|---------------------|-----------|-------------|-----------|-------|
| <div>NEWMAR CORP</div> <div>P.O. Box 30,</div> <div>Nappanee, IN. 46550</div> <div>UNITS: INCHES</div> <div>TITLE BLOCK: 1TB</div> | Model: | Sheet | Drawn by: | Checked by: | Revision: | By: |
| | MA DP 4519 | 2 OF 2 | Z. R. | A. M. | | Date: |
| | Title: | I.D. # 2017\ | Date: | Date: | Revision: | By: |
| | LAV BASE & TOP | SPECIALS\MOT\915LV1 | 9/15/16 | 9/21/16 | | Date: |

| ITEM # | OPTION | NEWMAR # | DESCRIPTION |
|--------|--------|----------|---------------------------------------|
| 1 | — | 127710 | MICROWAVE WHIRLPOOL 30" SS CONVECTION |



PLAN VIEW



(1) 11 1/4 X 23 3/8 DOOR (LFT HG)

J

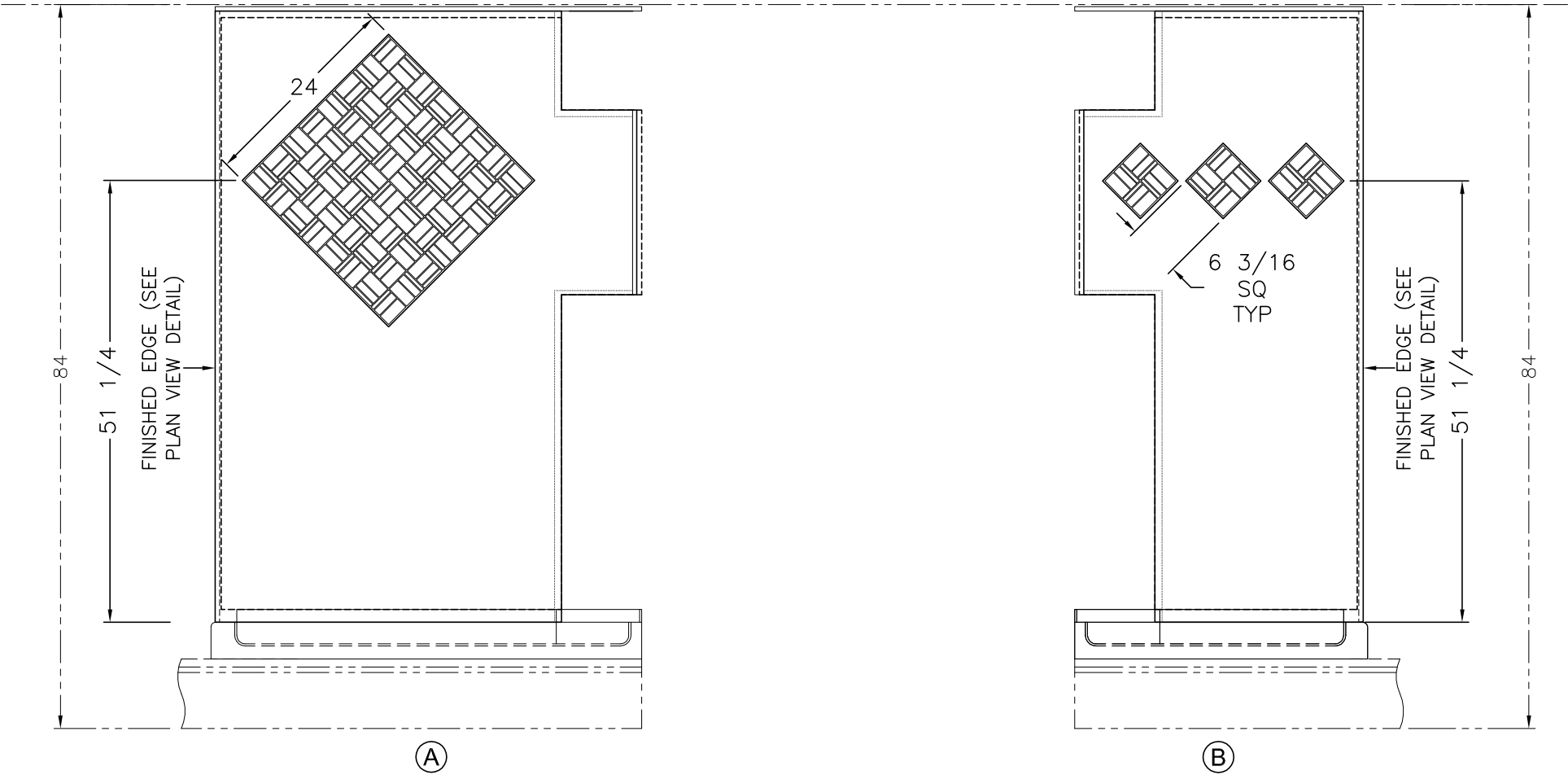
PLEASE ACKNOWLEDGE AND DATE THE FOLLOWING ORDER/PRINT FOR APPROVAL TO BUILD, AND FAX TO NEWMAR (AT 574-773-2895) AS SOON AS POSSIBLE
DATE: _____
SIGN: _____

UNIT: # 904500
DEALER: Berryland Campers
SPECIAL: # 915

| | | | | | | |
|---|-------------------------|--------------------|-----------|-------------|-----------|-------|
| NEWMAR CORP <i>P.O. Box 30, Nappanee, IN. 46550</i> | Model: | Sheet | Drawn by: | Checked by: | Revision: | By: |
| | MA DP 4519 | 1 OF 1 | Z. R. | A. M. | | Date: |
| | Title: | I.D. # 2017\ | Date: | Date: | Revision: | By: |
| | 76 1/2 KITCHEN CABINETS | SPECIALS\MOT\9150H | 9/20/16 | 9/21/16 | | Date: |

2017 LA DP BACKSPLASH TILE

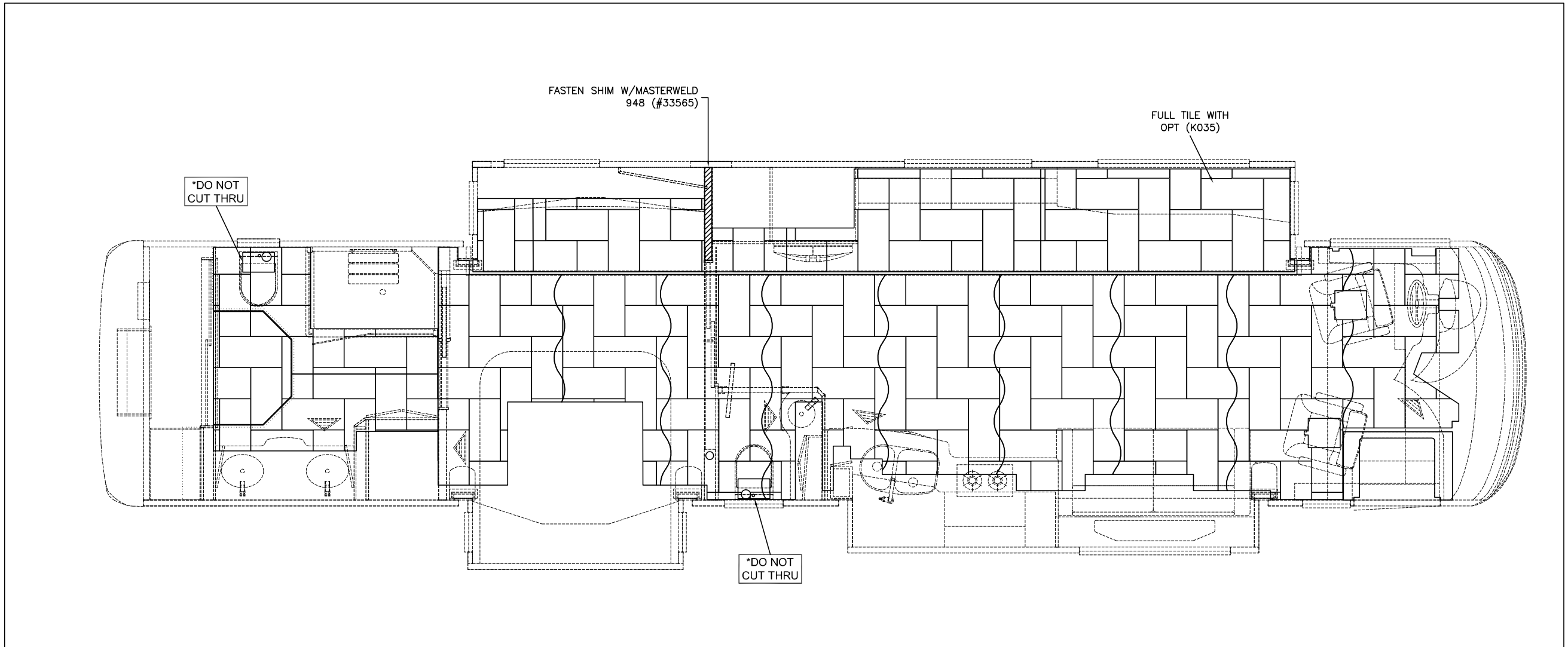
PLEASE ACKNOWLEDGE AND DATE THE FOLLOWING ORDER/PRINT FOR APPROVAL TO BUILD, AND FAX TO NEWMAR (AT 574-773-2895) AS SOON AS POSSIBLE
DATE: _____
SIGN: _____



UNIT: # 904500
DEALER: Berryland Campers
SPECIAL: # 915

ROUT TILE OPENINGS
3/8" DEEP

| | | | | | | |
|---|----------------------------|----------------------|-----------|-------------|-----------|-------|
| <div>NEWMAR CORP</div> <div>P.O. Box 30,</div> <div>Nappanee, IN. 46550</div> <div>UNITS: INCHES</div> <div>TITLE BLOCK: 75TB</div> | Model: | Sheet | Drawn by: | Checked by: | Revision: | By: |
| | MA DP 4519 | 1 OF 1 | Z. R. | A. M. | | Date: |
| | Title: | I.D. # 2017\ | Date: | Date: | Revision: | By: |
| | SOLID SURFACE SHOWER WALLS | SPECIALS\MOT\915SHWR | 9/19/16 | 9/21/16 | | Date: |



2017 LA DP TILE
11 9/16 x 23 3/8

UNIT: # 904500
DEALER: Berryland Campers
SPECIAL: # 915

PLEASE ACKNOWLEDGE AND DATE THE FOLLOWING ORDER/PRINT FOR APPROVAL TO BUILD, AND FAX TO NEWMAR (AT 574-773-2895) AS SOON AS POSSIBLE
DATE: _____
SIGN: _____

| | | | | | | | |
|---|---------------------|----------------------|---------------|-----------|-------------|-----------|-------|
| NEWMAR CORP <i>P.O. Box 30, Nappanee, IN. 46550</i> | Model: | (K035) | Sheet | Drawn by: | Checked by: | Revision: | By: |
| | | MA DP 4519 | 1 OF 1 | Z. R. | A. M. | | Date: |
| | Title: | | I.D. # 2017\ | Date: | Date: | Revision: | By: |
| | | STANDARD TILE LAYOUT | SPECIALS\MOT\ | 9/15/16 | 9/21/16 | | Date: |
| | UNITS: INCHES | | 915TILE | | | | |
| | TITLE BLOCK: 3125TB | | | | | | |