

# NEWMAR CORPORATION WARRANTY DEPARTMENT

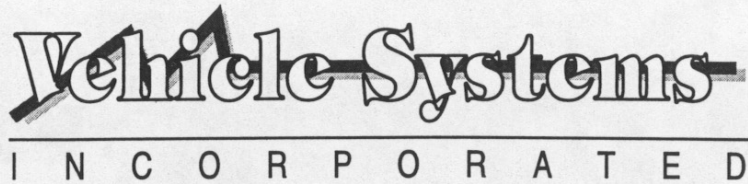
TECHNICAL SERVICE BULLETIN									
DATE ISSUED		MODEL YEAR(S) AFFECTED			MODEL(S) AFFECTED			TSB #	
1/29/02		1999-Current			Equipment Specific			236	
BRAND						TYPE			
All <input type="checkbox"/>		American Star <input type="checkbox"/>	Kountry Star <input type="checkbox"/>	Dutch Star <input type="checkbox"/>	All <input type="checkbox"/>		T T <input type="checkbox"/>	F W <input type="checkbox"/>	
NewAire <input type="checkbox"/>		Mountain Aire <input type="checkbox"/>	Kountry Aire <input type="checkbox"/>	London Aire <input type="checkbox"/>	C A <input type="checkbox"/>		D P <input type="checkbox"/>	D B <input type="checkbox"/>	
<input type="checkbox"/> Air Conditioning & Heating					<input type="checkbox"/> Electrical Components				
<input type="checkbox"/> Appliances & Accessories					<input type="checkbox"/> Exterior Components				
<input type="checkbox"/> Cabinets & Furniture					<input type="checkbox"/> Interior Components				
<input type="checkbox"/> Chassis Components					<input checked="" type="checkbox"/> Plumbing & Bath Components				
<input type="checkbox"/> Construction Components					<input type="checkbox"/> Windows, Awnings, Vents, & Doors				
DESCRIPTION OF PROBLEM									
<p>A pressure relief valve has been added to the domestic water plumbing system of both the Aqua-Hot and Hydro-Hot Heating Systems. This will effect the following models:</p> <p>Aqua-Hot AHE-100-02 Hydro-Hot HHE-200-07E, HHE-500-07M, and HHE-700-07N.</p>									
RECOMMENDED SOLUTION									
<p>Please review the attached Vehicle Systems Technical Bulletin number 119.</p>									

If you have any questions regarding this T.S.B., please contact a Warranty Service Representative at Newmar Corporation.

# NEWMAR CORPORATION

## WARRANTY DEPARTMENT

### TECHNICAL BULLETIN



**Date: January 07, 2002**

**15549 East Highway 52  
Fort Lupton, CO 80621  
303-857-2901**

**Tech. Bulletin #119**

### **Subject: Implementation of a Pressure-Relief Valve.**

---

\* This Technical Bulletin applies to all current Aqua-Hot Heating Systems beginning with model number AHE-100-02 and all current Hydro-Hot Heating Systems beginning with model numbers HHE-200-07E, HHE-500-07M, and HHE-700-07N.

- This Technical Bulletin addresses a recent product change affecting the domestic water system of both the Aqua-Hot and Hydro-Hot Heating Systems. Because of the recent introduction of "variable speed control" domestic water Demand Pumps, which promote the elimination of Expansion Tanks, Vehicle Systems, Inc. has incorporated an internal Pressure-Relief Valve into the domestic water system of the above mentioned products. This valve will ensure the release of excess pressure should a situation occur where the pressure of the domestic water system exceeds 125 PSI.

The attached drawings detail Aqua-Hot and Hydro-Hot product mounting specifics:

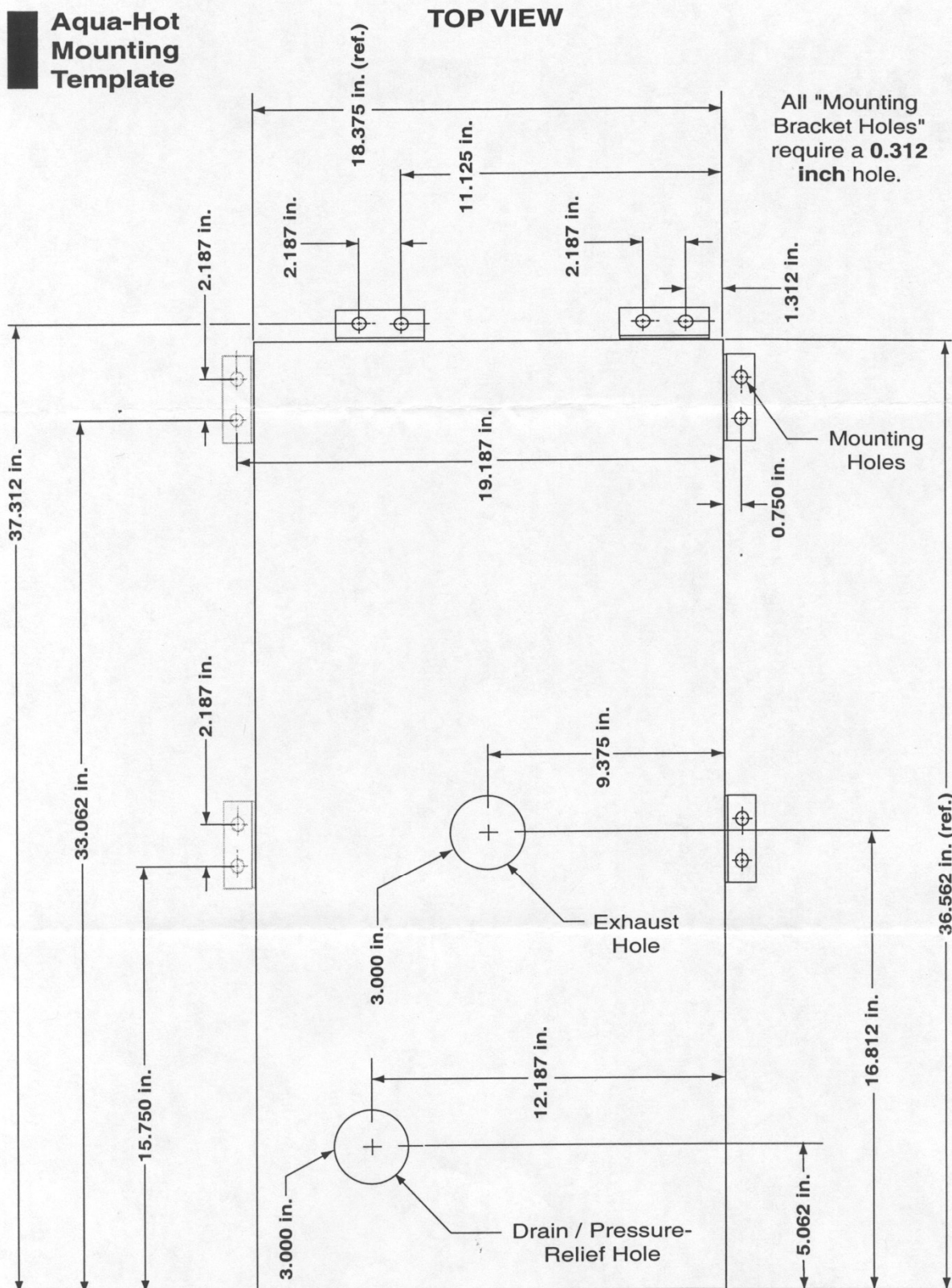
#### **Mounting details for the Aqua-Hot:**

- 1.) The existing Drain Hole in the Aqua-Hot's Drain Pan (labeled "Drain / Pressure Relief Hole") now requires the installer to provide a 3.00 inch hole instead of the previous specified 1.50 inch hole. This larger hole will ensure that the swaged Drain / Pressure Relief Hole will lay flat against the mounting surface which allows for proper drainage, if applicable.
- 2.) Please note that the Drain / Pressure-Relief Hole must remain open to the underside of the recreational vehicle at all times. This hole is a UL307A requirement and is provided specifically as a Drip-Pan to drain any collected fluids, if applicable, to the underside of the vehicle.

#### **Mounting details for the Hydro-Hot:**

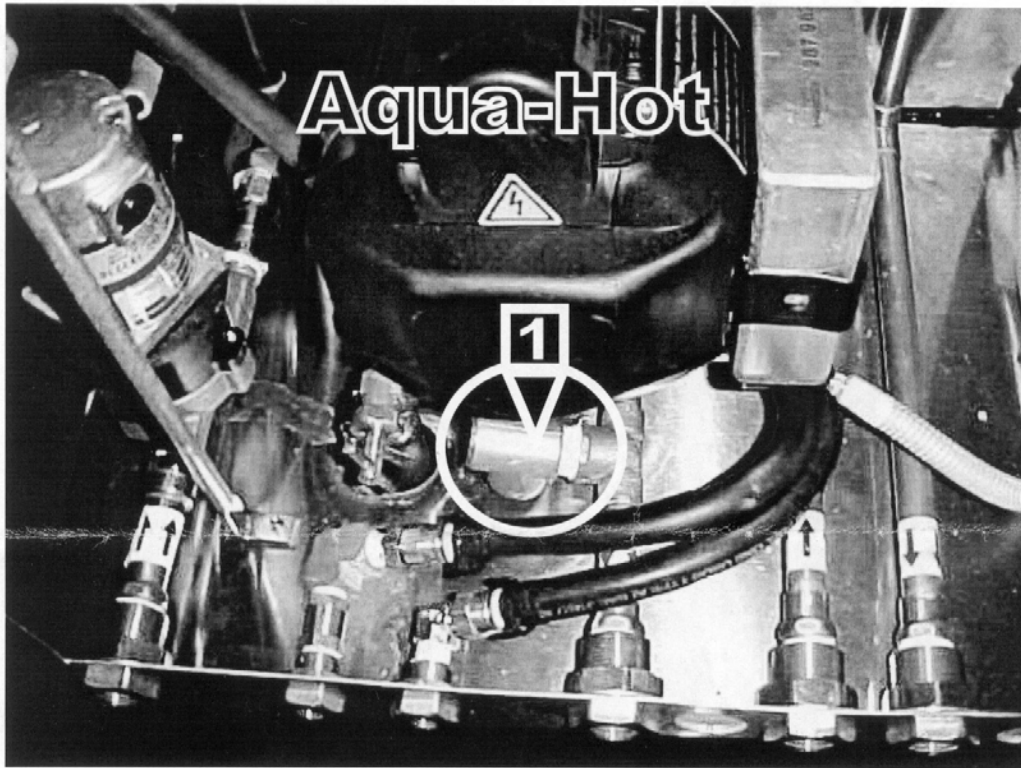
- 1.) There is a new 2.00 inch hole in the back side of the Hydro-Hot cabinet. This "Pressure-Relief Drain Hole" is to be used specifically for this new valve arrangement and will allow for drainage in the event the Pressure-Relief Valve pops-off. Be sure to provide this new drainage hole in all Hydro-Hot product applications.
- 2.) The provided Mounting Template has been slightly modified from the original illustration, which can presently be found on page 9 (i.e. Figure 4) of the Hydro-Hot Installation Manual. Please be sure to utilize this new template for all existing and new Motorhome applications.

If you have any questions regarding this T.S.B., please contact a Warranty Service Representative at Newmar Corporation.

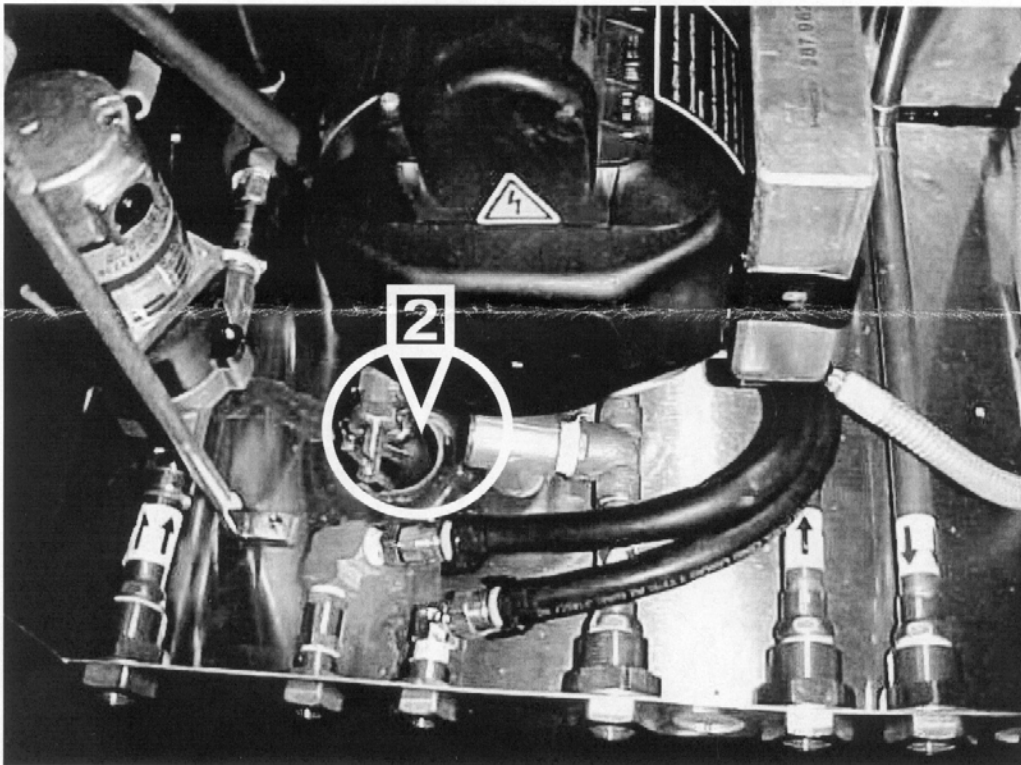


If you have any questions regarding this T.S.B., please contact a Warranty Service Representative at Newmar Corporation.

# NEWMAR CORPORATION WARRANTY DEPARTMENT



**1. Pressure-Relief Valve**



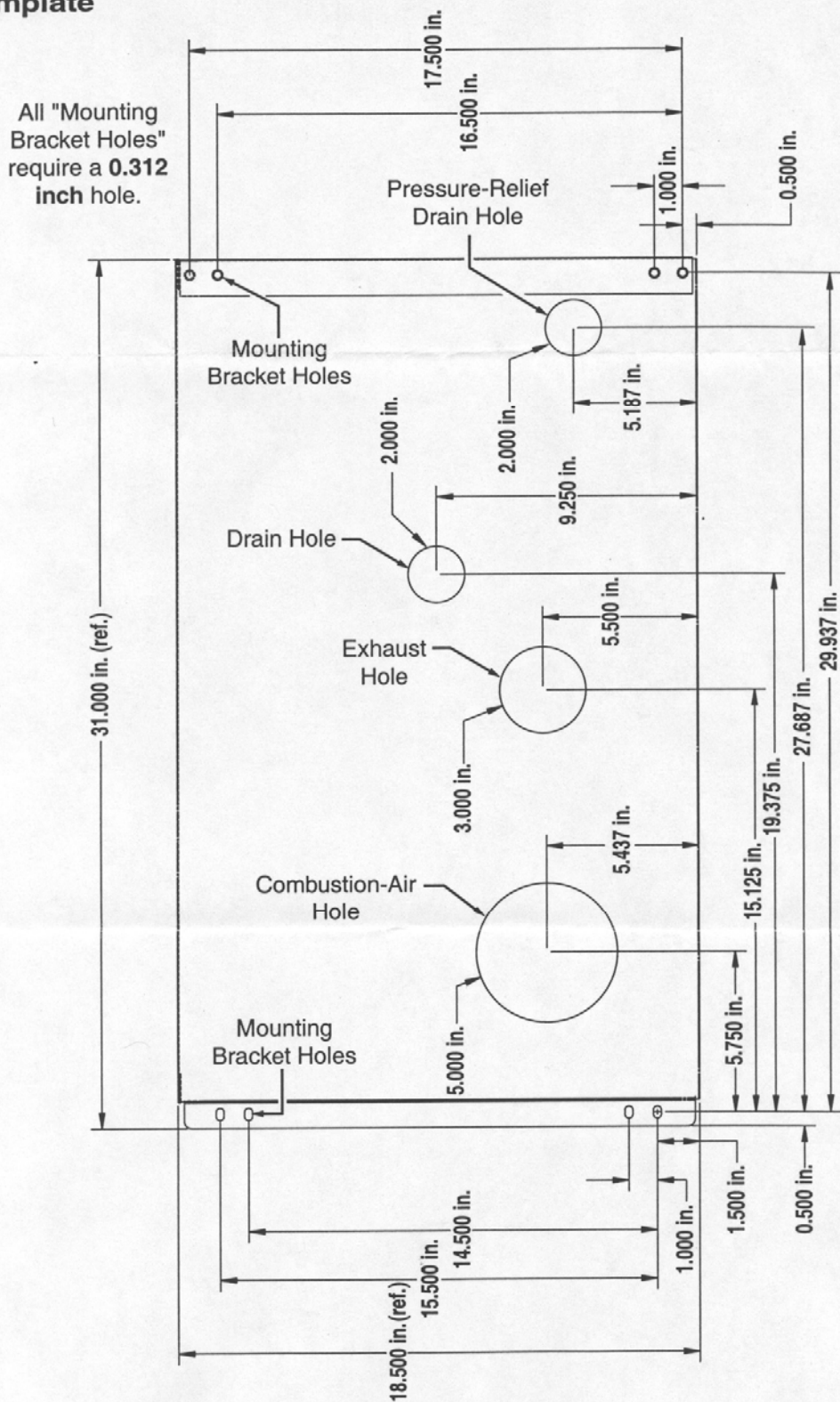
**2. Pressure-Relief Valve Drain Hole**

If you have any questions regarding this T.S.B., please contact a Warranty Service Representative at Newmar Corporation.

# NEWMAR CORPORATION WARRANTY DEPARTMENT

## Hydro-Hot Mounting Template

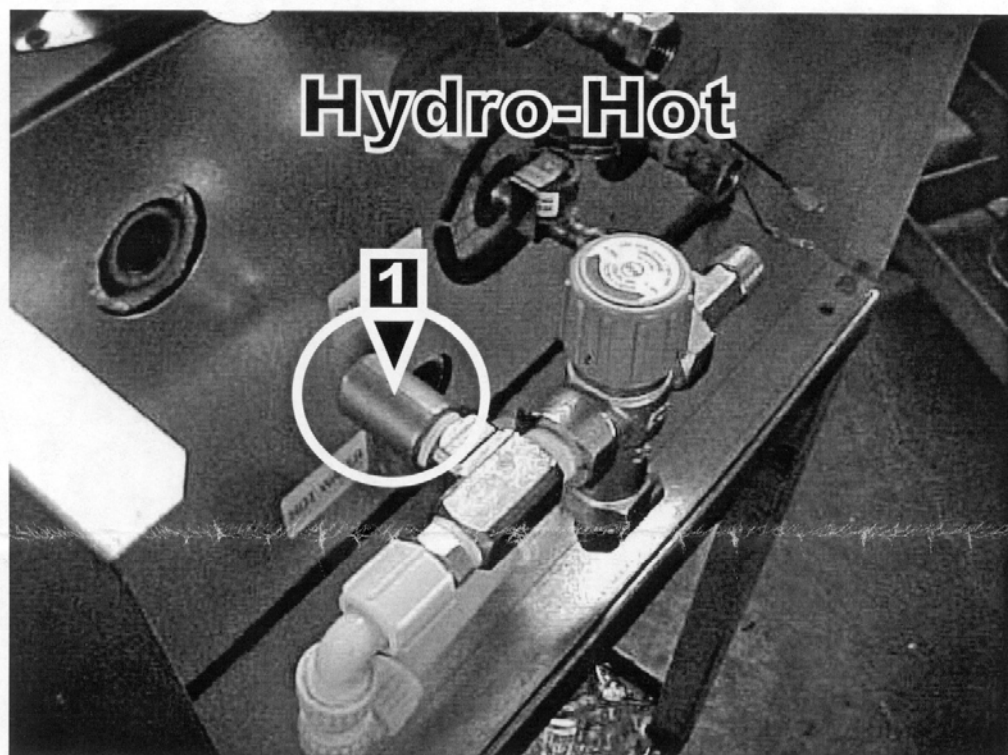
### TOP VIEW



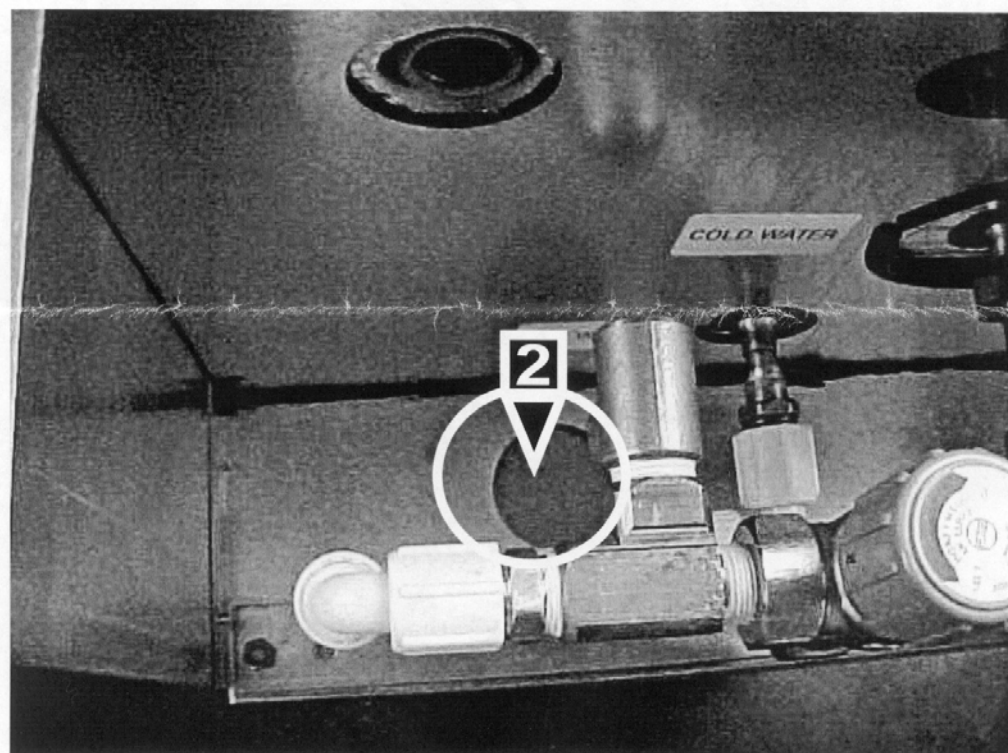
If you have any questions regarding this T.S.B., please contact a Warranty Service Representative at Newmar Corporation.



# NEWMAR CORPORATION WARRANTY DEPARTMENT



**1. Pressure-Relief Valve**



**2. Pressure-Relief Valve Drain Hole**



If you have any questions regarding this T.S.B., please contact a Warranty Service Representative at Newmar Corporation.