



# SPARTAN CHASSIS, INC.

CSB06-320-001

June, 2006

Page 1 of 3

## CAMPAIGN SERVICE BULLETIN

---

**SUBJECT:** Brake Chambers – Bendix

**APPLIES TO:** Certain Spartan Chassis Models Manufactured with Bendix Brake Chambers and having a VDM (Vehicle Date of Manufacture) of December 14, 2004 through March 23, 2006.

**CONDITION:** The rear axle brake chambers are installed with the vent hole incorrectly positioned.

**CORRECTION:** Remove and reinstall brake chambers.

### **PART / SERVICE INFORMATION:**

**Labor Time:** 1.0 Hr.

<b><u>QTY.</u></b>	<b><u>Part Number</u></b>	<b><u>Description</u></b>
1	S-1755-001	Bendix -Kit Brake Chamber Vent
As required	81801 or equivalent	Pipe Sealent W/Teflon

**Kit #S-1755-001 Contains:**

<b><u>QTY.</u></b>	<b><u>Part Number</u></b>	<b><u>Description</u></b>
4	5010797	Nut-Lock M-16 X 1.5
1	CSB06-320-001	Document Instructions

**PLEASE READ THE ENTIRE BULLETIN BEFORE  
PROCEEDING WITH ANY WORK.**

Technical Service Bulletins are intended for use by Professional Technicians only. They are written to guide Professional Technicians in performing service to vehicles of product specific nature in conjunction with industry standards. Professional Technicians are appropriately trained on industry standards and have the tools and equipment to perform procedures safely and properly.



# SPARTAN CHASSIS, INC.

**CSB06-320-001**

June, 2006

Page 2 of 3

## CAMPAIGN SERVICE BULLETIN

---

### **STEP-BY-STEP INSTRUCTIONS:**

1. Observe all industry safety standards and secure vehicle for removal and reinstallation of the rear drive axle brake chambers.
2. Inspect both rear brake chambers. If there is **not** a vent hole present on the bottom side of the chambers, proceed to step #3. If a vent hole is on the bottom, no further action required.
3. Release the parking brake.
4. Refer to FIG. 3-1. Cage both brake chambers. Turn the bolt counter clockwise until it is fully extended.
5. Mark the brake hoses on each brake chamber identifying the service and parking brake connections.
6. Disconnect both service and parking brake hoses then remove fittings from brake chambers.
7. Refer to FIG. 3-2. Unbolt the brake chambers from the brackets.
8. Install the left chamber on the right side and the right chamber on the left side. Ensure that the vent hole is located on the bottom side of each brake chamber.
9. Secure the chambers to the brackets. Torque nuts to 133 +/- 7 FT. LBS.
10. Apply 81801 pipe sealer w/Teflon as required to pipe threads only. Reinstall fittings into brake chambers.
11. Install the brake hoses to the correct service and parking brake ports and tighten.
12. Release the caging bolts.
13. Set the parking brake.

Technical Service Bulletins are intended for use by Professional Technicians only. They are written to guide Professional Technicians in performing service to vehicles of product specific nature in conjunction with industry standards. Professional Technicians are appropriately trained on industry standards and have the tools and equipment to perform procedures safely and properly.



# SPARTAN CHASSIS, INC.

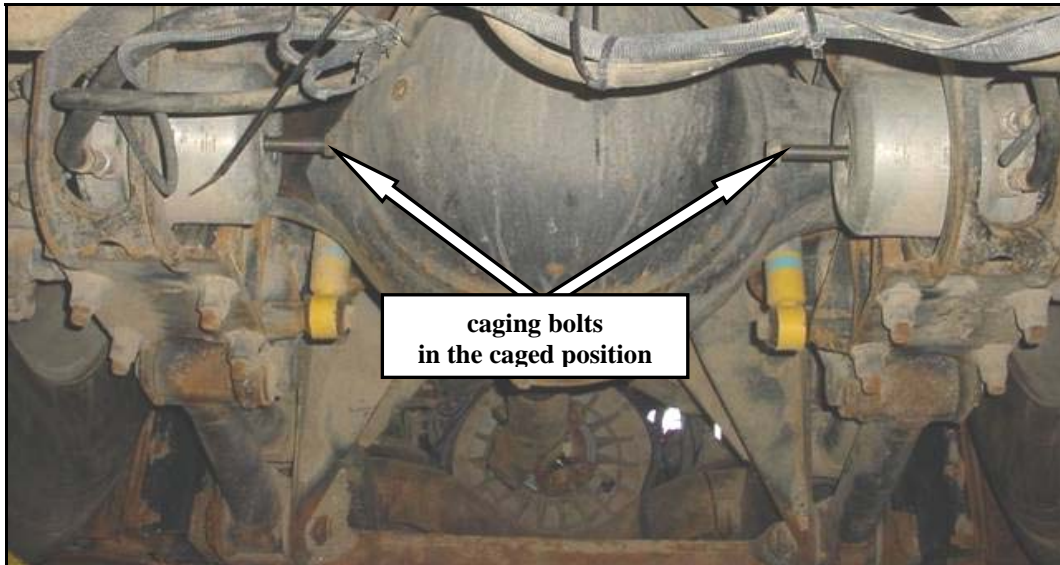
CSB06-320-001

June, 2006

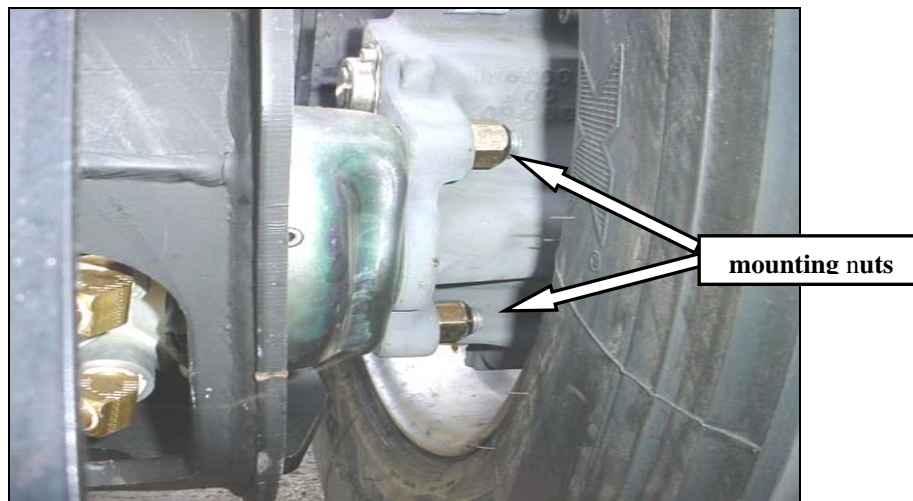
Page 3 of 3

## CAMPAIGN SERVICE BULLETIN

---



**FIG. 3-1**



**FIG. 3-2**

Technical Service Bulletins are intended for use by Professional Technicians only. They are written to guide Professional Technicians in performing service to vehicles of product specific nature in conjunction with industry standards. Professional Technicians are appropriately trained on industry standards and have the tools and equipment to perform procedures safely and properly.