

# Newmar Corporation

## Warranty Department

Technical Service Bulletin																			
Date Issued		Model Year(s) Affected		Model(s) Affected		TSB #													
3/5/2007		March 17, 2006 – December 31, 2006		Mountain Aire, Dutch Star, Essex		314													
Brand						Type													
All	<input type="checkbox"/>	American Star	<input type="checkbox"/>	Mountain Aire	<input checked="" type="checkbox"/>	All	<input type="checkbox"/>	T T	<input type="checkbox"/>										
		Dutch Star	<input checked="" type="checkbox"/>	Kountry Aire	<input type="checkbox"/>	F W	<input type="checkbox"/>	C A	<input type="checkbox"/>										
		Kountry Star	<input type="checkbox"/>	Essex	<input checked="" type="checkbox"/>	D P	<input checked="" type="checkbox"/>	D B	<input type="checkbox"/>										
Scottsdale	<input type="checkbox"/>	Northern Star	<input type="checkbox"/>	London Aire	<input type="checkbox"/>														
<table border="0"><tr><td><input type="checkbox"/> Air Conditioning &amp; Heating</td><td><input type="checkbox"/> Electrical Components</td></tr><tr><td><input type="checkbox"/> Appliances &amp; Accessories</td><td><input type="checkbox"/> Exterior Components</td></tr><tr><td><input type="checkbox"/> Cabinets &amp; Furniture</td><td><input type="checkbox"/> Interior Components</td></tr><tr><td><input checked="" type="checkbox"/> Chassis Components</td><td><input type="checkbox"/> Plumbing &amp; Bath Components</td></tr><tr><td><input type="checkbox"/> Construction Components</td><td><input type="checkbox"/> Windows, Awnings, Vents, &amp; Doors</td></tr></table>										<input type="checkbox"/> Air Conditioning & Heating	<input type="checkbox"/> Electrical Components	<input type="checkbox"/> Appliances & Accessories	<input type="checkbox"/> Exterior Components	<input type="checkbox"/> Cabinets & Furniture	<input type="checkbox"/> Interior Components	<input checked="" type="checkbox"/> Chassis Components	<input type="checkbox"/> Plumbing & Bath Components	<input type="checkbox"/> Construction Components	<input type="checkbox"/> Windows, Awnings, Vents, & Doors
<input type="checkbox"/> Air Conditioning & Heating	<input type="checkbox"/> Electrical Components																		
<input type="checkbox"/> Appliances & Accessories	<input type="checkbox"/> Exterior Components																		
<input type="checkbox"/> Cabinets & Furniture	<input type="checkbox"/> Interior Components																		
<input checked="" type="checkbox"/> Chassis Components	<input type="checkbox"/> Plumbing & Bath Components																		
<input type="checkbox"/> Construction Components	<input type="checkbox"/> Windows, Awnings, Vents, & Doors																		
Description of Problem																			
Tag axle hub covers melting.																			
Recommended Solution																			
Replace wheel bearings. See manufacturer's attached repair directions. Contact manufacturer directly for additional information or instructions.																			



# SPARTAN CHASSIS, INC.

CSB07-340-001A

June, 2007

Page 1 of 4

## CAMPAIGN SERVICE BULLETIN

**SUBJECT:** Rear Axle – Hendrickson Tag Wheel Bearing Failure

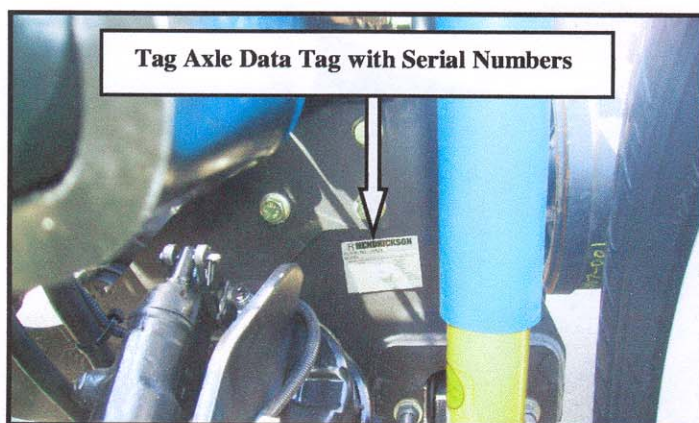
*Bulletin #CSB07-340-001 is superseded by bulletin #CSB07-340-001A due to an update to the "Applies To" section. Any vehicle repaired under bulletin #CSB07-340-001 should not require any additional work.*

**APPLIES TO:** Certain Spartan MM and K2 Chassis with a Tag Axle and a VDM (Vehicle Date of Manufacture) of March 17, 2006 through June 25, 2007.

**CONDITION:** Tag Axle Hub Covers Melting

**CORRECTION:** Replace Wheel Bearings

**PLEASE READ THE ENTIRE BULLETIN BEFORE PROCEEDING WITH ANY WORK. CONTACT SPARTAN CHASSIS IF THERE ARE ANY CONCERNS WITH THE PROCEDURES CONTAINED IN THIS DOCUMENT**



*Serial number of the tag axle must be reported to Spartan Chassis for payment of warranty claim*

**TAG AXLE DATA TAG LOCATION**

**FIG. 1-1**

Technical Service Bulletins are intended for use by Professional Technicians only. They are written to guide Professional Technicians in performing service to vehicles of product specific nature in conjunction with industry standards. Professional Technicians are appropriately trained on industry standards and have the tools and equipment to perform procedures safely and properly.



# SPARTAN CHASSIS, INC.

CSB07-340-001A

June, 2007

Page 2 of 4

## CAMPAIGN SERVICE BULLETIN

### SPECIAL INSTRUCTIONS:

- A) If VDM is before 12/31/06 order kit S-1820-001 and proceed to step # 1. Otherwise, refer to item B below.
- B) If VDM is after 12/31/06 inspect end caps and sight window for signs of melting and check oil level. If there are signs of overheating, melting caps and/or low oil level, order kit S-1820-001 and proceed to step #1. Otherwise refer to C) below.
- C) For units that have a VDM after 12/31/06 and show no signs of overheating, a kit is not required. Perform steps #1 through #6 then perform the necessary steps to properly set the end play.

### PART / SERVICE INFORMATION:

**Labor Time:** 2.0 hrs.

<u>QTY.</u>	<u>Part Number</u>	<u>Description</u>
1	S-1820-001A	Kit-Tag Axle Bearing
14 fl. oz.	Premium SAE 80W – 90	API Service GL-5, API MT-1

#### **Kit # S-1820-001A Contains:**

<u>QTY.</u>	<u>Part Number</u>	<u>Description</u>
1	006914	Vendor Kit- Tag Axle Bearing
1	CSB07-340-001A	Document Instructions

Parts included in Vendor  
Kit -006914:

<u>QTY.</u>	<u>Part Number</u>	<u>Description</u>
2	A-2717	Inner Bearings
2	A-2718	Outer Bearings
2	A-11571	Wheel Seals
2	004797	Wheel Nut Assembly
2	003520	Hub Caps
2	A-1973	Hub Cap Gaskets
12	SA-1100-4	Hub Cap Bolts
12	SA-1600-7	Lock Washers

Technical Service Bulletins are intended for use by Professional Technicians only. They are written to guide Professional Technicians in performing service to vehicles of product specific nature in conjunction with industry standards. Professional Technicians are appropriately trained on industry standards and have the tools and equipment to perform procedures safely and properly.





# SPARTAN CHASSIS, INC.

CSB07-340-001A

June, 2007

Page 3 of 4

## CAMPAIGN SERVICE BULLETIN

---

### STEP-BY-STEP INSTRUCTIONS:

1. Observe all industry safety standards and secure vehicle to allow for the replacement of the tag axle bearings.
  2. Raise tag axle and place jack stands under tag axle.
  3. Remove wheel dressing retaining for reuse.
  4. Remove wheel assembly retaining lug nuts for reuse.
  5. Place drain pan under hub.
  6. Remove the brake drum and hub retaining drum for reuse, and dispose of hub properly.
  7. Remove the bearings and wheel seal. Dispose of bearings and wheel seal properly.
  8. Install the new wheel seal using the proper installation tools.
  9. Clean the spindle and hub bore. Lubricate the wheel bearing with clean lubricant of the same type to be used in the hub assembly.
  10. Install the new bearings and hub on the spindle. Using a torque wrench. Tighten the inner nut to a torque of 200 ft. lbs. The hub should be rotated while tightening.
  11. Back the inner nut off one full turn.
  12. Tighten the inner nut to a torque of 50 ft. lbs. while rotating the hub.
  13. Back the nut off  $\frac{1}{4}$  turn.
  14. Install the lock ring and star and torque the jam nut to 300 - 400 ft. lbs. Confirm the end play is between 0.001" and 0.005" as measured with a dial indicator.
- NOTE: Failure to set end play between 0.001"- 0.005" could result in premature bearing failure.**
15. Bend a couple of the star washer tabs over the edge of the jam nut to lock the wheel nut system.
  16. Install the new hub cap gasket and hub. Torque to 16 - 20 ft. lbs.

Technical Service Bulletins are intended for use by Professional Technicians only. They are written to guide Professional Technicians in performing service to vehicles of product specific nature in conjunction with industry standards. Professional Technicians are appropriately trained on industry standards and have the tools and equipment to perform procedures safely and properly.



# SPARTAN CHASSIS, INC.

CSB07-340-001A

June, 2007

Page 4 of 4

## CAMPAIGN SERVICE BULLETIN

---

17. Fill the hub to the appropriate level (approximately 14 fl. oz.) using the hub oil specified.
18. Reinstall brake drum and wheel assembly. Torque to 450 - 500 ft. lbs.
19. Reinstall wheel dressings.
20. Repeat steps 3 through 19 for opposite side.

**NOTE: Refer to FIG. 1-1. To be paid for claim you must report tag axle serial number to Spartan Chassis Customer Service.**

Technical Service Bulletins are intended for use by Professional Technicians only. They are written to guide Professional Technicians in performing service to vehicles of product specific nature in conjunction with industry standards. Professional Technicians are appropriately trained on industry standards and have the tools and equipment to perform procedures safely and properly.